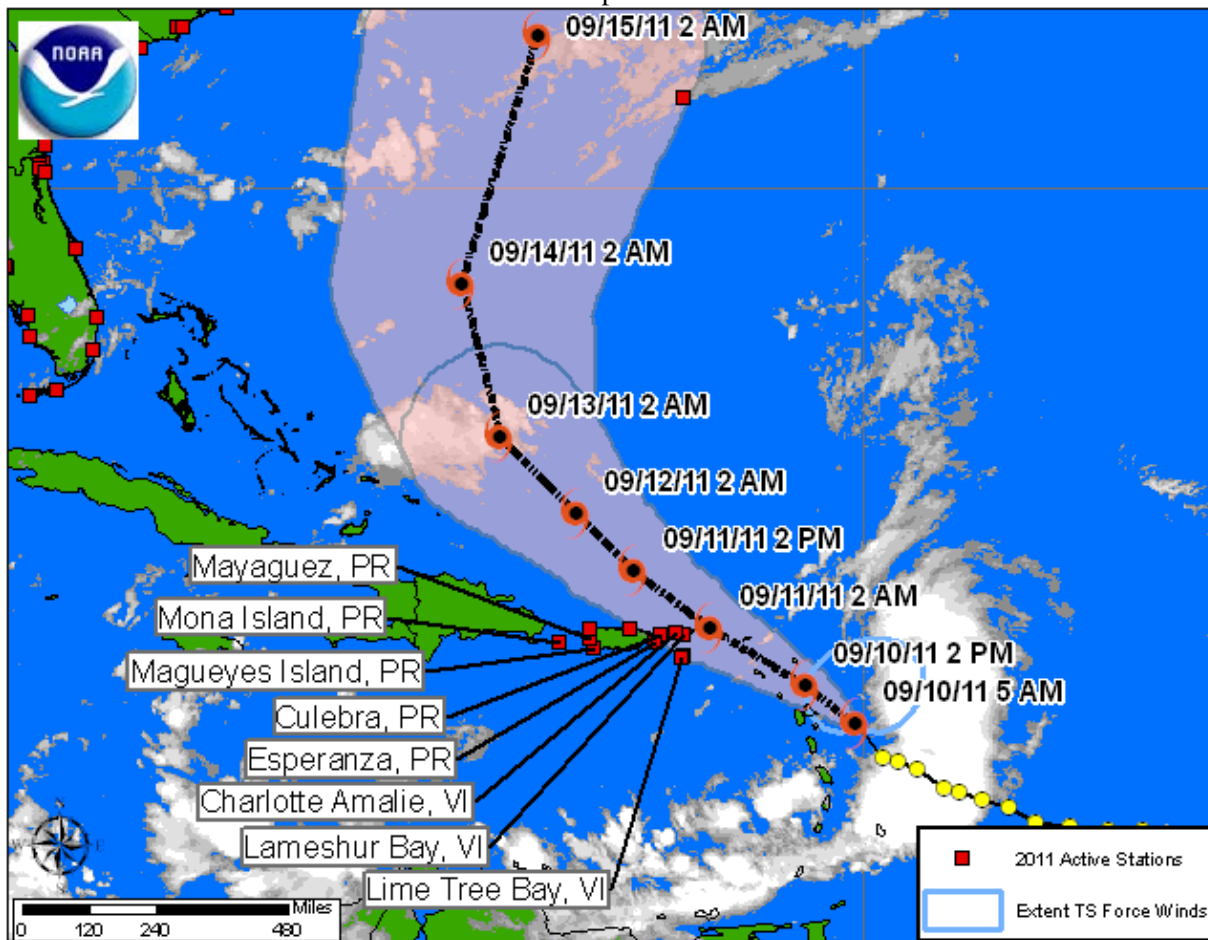


Tropical Storm MARIA QuickLook
Posted: 06:30 AST 09/10/2011

NOAA and NOAA Partnership Stations Relative to the Storm



Storm Analysis

As of 09/10/2011 06:00 AST, water levels in the U.S. Virgin Islands and Puerto Rico are at or near predictions. Winds are steady, with gusts up to 17 knots at Lime Tree Bay, VI. Barometric pressure is beginning to gradually fall across the region.

Water Level and Meteorological plots available below are updated automatically. Water level predictions relative to Mean Lower Low Water are:

Lime Tree Bay, VI: Next predicted high tides are 0.7 ft (0.22 m) at 09/10/2011 20:40 AST and 0.7 ft (0.21 m) at 09/11/2011 20:09 AST.

Lameshur Bay, St. John, VI: Next predicted high tides are 0.4 ft (0.12 m) at 09/10/2011 06:40 AST and 0.7 ft (0.22 m) at 09/10/2011 20:33 AST.

Tropical Storm MARIA QuickLook, POSTED 06:30 AST 09/10/2011

Charlotte Amalie, VI: Next predicted high tides are 0.9 ft (0.27 m) at 09/10/2011 20:06 AST and 0.7 ft (0.21 m) at 09/11/2011 07:31 AST.

Culebra, PR: Next predicted high tides are 0.8 ft (0.24 m) at 09/10/2011 06:33 AST and 1.0 ft (0.31 m) at 09/10/2011 19:34 AST.

Esperanza, Vieques Island, PR: Next predicted high tides are 0.6 ft (0.19 m) at 09/10/2011 20:01 AST and 0.4 ft (0.14 m) at 09/11/2011 06:08 AST.

Magueyes Island, PR: Next predicted high tides are 0.8 ft (0.23 m) at 09/10/2011 20:37 AST and 0.6 ft (0.17 m) at 09/11/2011 06:59 AST.

Mayaguez, PR: Next predicted high tides are 0.8 ft (0.25 m) at 09/10/2011 07:15 AST and 1.0 ft (0.32 m) at 09/10/2011 19:52 AST.

Mona Island, PR: Next predicted high tides are 0.6 ft (0.19 m) at 09/10/2011 19:02 AST and 0.5 ft (0.15 m) at 09/11/2011 06:32 AST.

For additional data, please see the [Center for Operational Oceanographic Products & Services](#) website. For information on Highest Astronomical Tide (HAT), NAVD88 and other datums, please see [Tidal Datums](#). For more information or archived products and reports, please see the [Storm QuickLook](#) Homepage.

Analyst:WFR/CMF

SELECT NATIONAL HURRICANE CENTER ADVISORY INFORMATION:

TROPICAL STORM MARIA ADVISORY NUMBER 15
500 AM AST SAT SEP 10 2011

...MARIA REFUSES TO STRENGTHEN...

WATCHES AND WARNINGS

CHANGES WITH THIS ADVISORY...

NONE

SUMMARY OF WATCHES AND WARNINGS IN EFFECT...

A TROPICAL STORM WARNING IS IN EFFECT FOR...

* U.S. VIRGIN ISLANDS

* PUERTO RICO...INCLUDING VIEQUES AND CULEBRA

FOR STORM INFORMATION SPECIFIC TO YOUR AREA IN THE UNITED STATES...INCLUDING POSSIBLE INLAND WATCHES AND WARNINGS...PLEASE MONITOR PRODUCTS ISSUED BY YOUR LOCAL NATIONAL WEATHER SERVICE FORECAST OFFICE.

DISCUSSION AND 48-HOUR OUTLOOK

Tropical Storm MARIA QuickLook, POSTED 06:30 AST 09/10/2011

AT 500 AM AST THE CENTER OF TROPICAL STORM MARIA WAS ESTIMATED ABOUT 80 MI ESE OF GUADELOUPE OR ABOUT 425 MI ESE OF SAN JUAN PUERTO RICO. MARIA IS MOVING TOWARD THE NORTHWEST NEAR 13 MPH. THIS GENERAL MOTION IS EXPECTED TO CONTINUE DURING THE NEXT DAY OR TWO. ON THE FORECAST TRACK...MARIA AND ITS ASSOCIATED WEATHER WILL MOVE OVER THE LEEWARD ISLANDS LATER TODAY...AND REACH THE VIRGIN ISLANDS BY LATER TONIGHT.

MAXIMUM SUSTAINED WINDS ARE NEAR 45 MPH WITH HIGHER GUSTS. LITTLE CHANGE IN INTENSITY IS EXPECTED AS MARIA MOVES ACROSS THE NORTHEASTERN CARIBBEAN SEA BUT SOME STRENGTHENING IS FORECAST AS IT MOVES OVER THE OPEN ATLANTIC.

TROPICAL STORM FORCE WINDS EXTEND OUTWARD UP TO 175 MILES TO THE NORTH OF THE CENTER.

ESTIMATED MINIMUM CENTRAL PRESSURE IS 1005 MB.

HAZARDS AFFECTING LAND

WIND...TROPICAL STORM CONDITIONS ARE EXPECTED TO SPREAD OVER THE LESSER ANTILLES TODAY AND THEN OVER THE VIRGIN ISLANDS AND PUERTO RICO BY THE END OF THE DAY.

RAINFALL...MARIA IS EXPECTED TO PRODUCE TOTAL RAIN ACCUMULATIONS OF 4 TO 8 INCHES WITH ISOLATED MAXIMUM AMOUNTS OF 10 INCHES OVER THE CENTRAL TO NORTHERN LESSER ANTILLES...THE VIRGIN ISLANDS...AND PUERTO RICO.

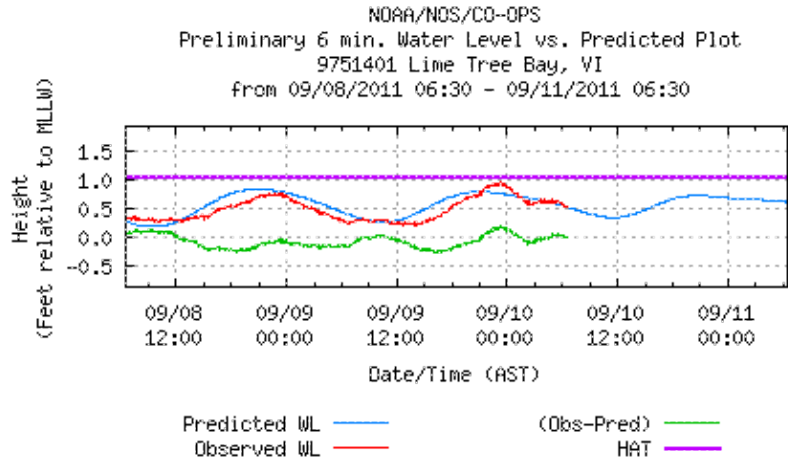
STORM SURGE...A STORM SURGE WILL RAISE WATER LEVELS BY AS MUCH AS 1 TO 2 FEET ABOVE NORMAL TIDE LEVELS ALONG THE IMMEDIATE COAST WITHIN THE WARNING AREA. NEAR THE COAST...THE SURGE WILL BE ACCOMPANIED BY LARGE AND DANGEROUS WAVES.

FORECASTER AVILA

For the purpose of timely release, data contained within this QuickLook have undergone a "limited" NOS Quality Assurance/Control; however, the data have not yet undergone final verification. All data subject to NOS verification.

Jump to: [Lime Tree Bay - Water Level](#), [Lime Tree Bay - Winds](#), [Lime Tree Bay - Barometric](#), [Lime Tree Bay - Air/Water Temp](#), [Lameshur Bay, St. John - Water Level](#), [Lameshur Bay, St. John - Barometric](#), [Lameshur Bay, St. John - Air/Water Temp](#), [Charlotte Amalie - Water Level](#), [Charlotte Amalie - Barometric](#), [Charlotte Amalie - Air/Water Temp](#), [Culebra - Water Level](#), [Culebra - Winds](#), [Culebra - Barometric](#), [Culebra - Air/Water Temp](#), [Esperanza, Vieques Island - Water Level](#), [Esperanza, Vieques Island - Winds](#), [Esperanza, Vieques Island - Barometric](#), [Esperanza, Vieques Island - Air/Water Temp](#), [Magueyes Island - Water Level](#), [Magueyes Island - Winds](#), [Magueyes Island - Barometric](#), [Magueyes Island - Air/Water Temp](#), [Mayaguez - Water Level](#), [Mayaguez - Winds](#), [Mayaguez - Barometric](#), [Mayaguez - Air/Water Temp](#), [Mona Island - Water Level](#),

Lime Tree Bay, VI - Return to List

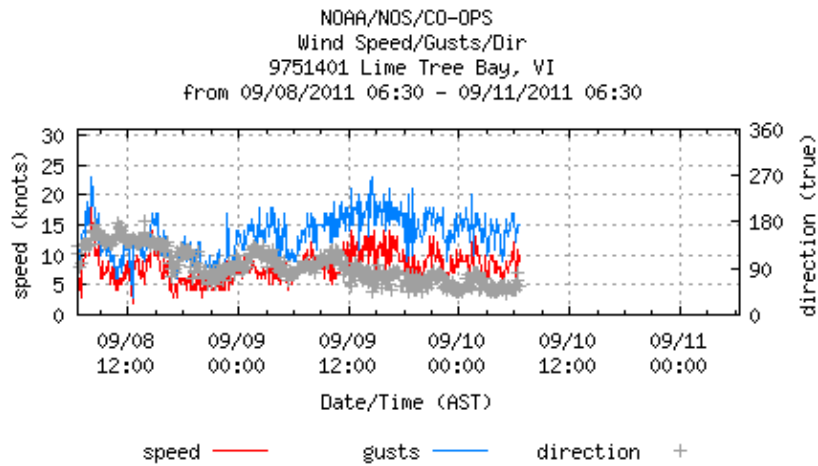


Last Observed Sample: 09/10/2011 06:30 (AST)

Relative to MLLW: **Observed: 0.53 ft.** **Predicted: 0.53 ft.** **Residual: 0.00 ft.**

Historical Maximum Water Level: Nov 17 1999, 1.88 ft. above MHHW

Lime Tree Bay, VI - Return to List

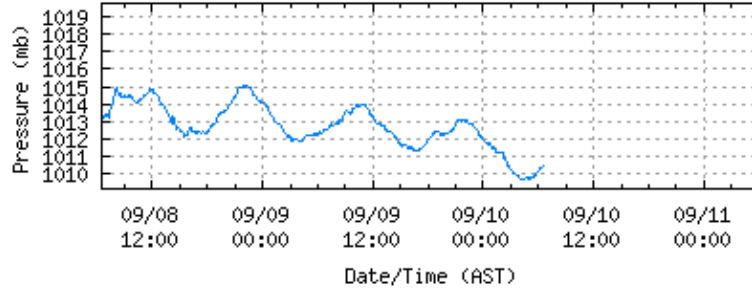


Last Observed Sample: 09/10/2011 06:30 (AST)

Wind Speed: 9 knots **Gusts: 15 knots** **Direction: 57° T**

Lime Tree Bay, VI - Return to List

NOAA/NOS/CO-OPS
Barometric Pressure Plot
9751401 Lime Tree Bay, VI
from 09/08/2011 06:30 - 09/11/2011 06:30



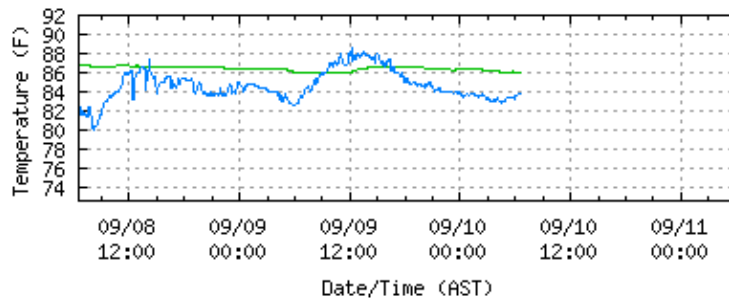
barometric pressure —

Last Observed Sample: 09/10/2011 06:30 (AST)

Barometric Pressure: 1010.4 mb

Lime Tree Bay, VI - Return to List

NOAA/NOS/CO-OPS
Air/Water Temperature Plot
9751401 Lime Tree Bay, VI
from 09/08/2011 06:30 - 09/11/2011 06:30

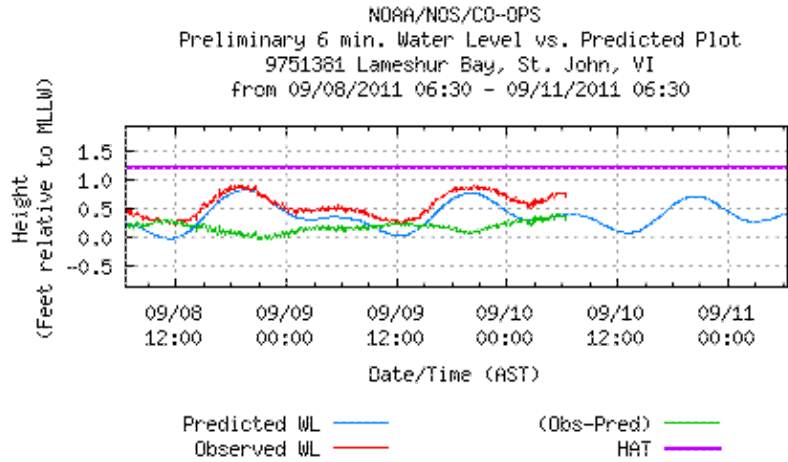


water temp. — air temp —

Last Observed Sample: 09/10/2011 06:30 (AST)

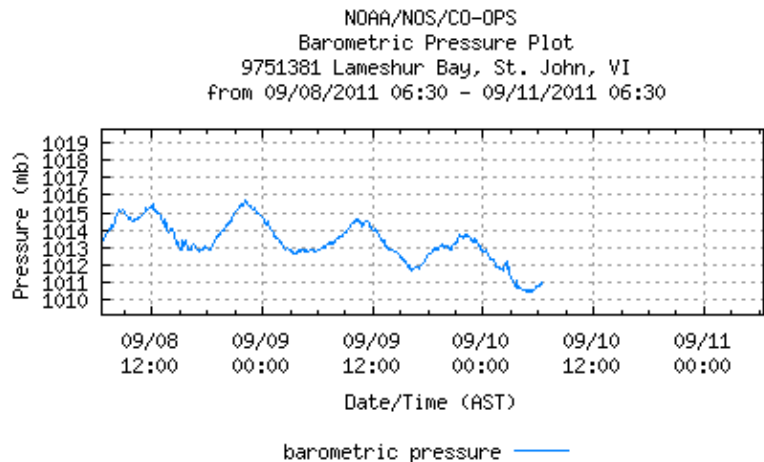
Water Temperature: 86.1° F Air Temperature: 83.7° F

Lameshur Bay, St. John, VI - Return to List



Last Observed Sample: 09/10/2011 06:24 (AST)
Relative to MLLW: **Observed: 0.76 ft. Predicted: 0.40 ft. Residual: 0.36 ft.**
Historical Maximum Water Level: Aug 30 2010, 0.9 ft. above MHHW

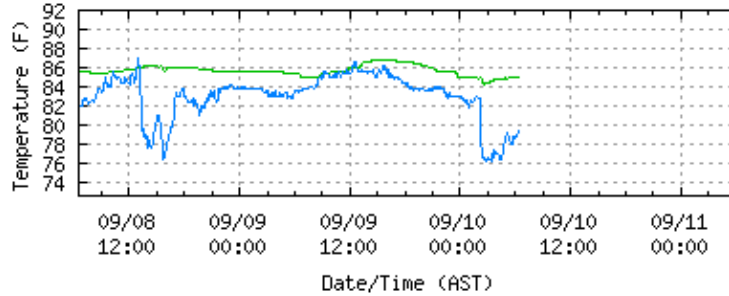
Lameshur Bay, St. John, VI - Return to List



Last Observed Sample: 09/10/2011 06:24 (AST)
Barometric Pressure: 1010.9 mb

Lameshur Bay, St. John, VI - Return to List

NOAA/NOS/CO-OPS
Air/Water Temperature Plot
9751381 Lameshur Bay, St. John, VI
from 09/08/2011 06:30 - 09/11/2011 06:30



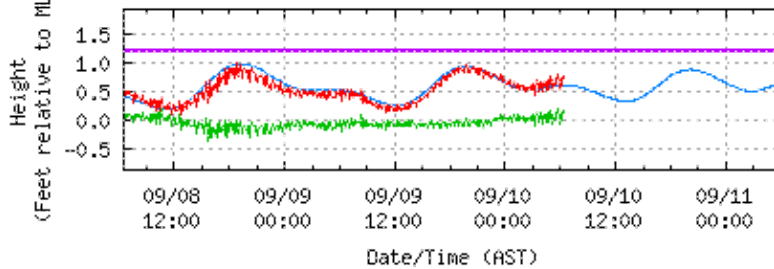
water temp. — air temp. —

Last Observed Sample: 09/10/2011 06:24 (AST)

Water Temperature: 84.9° F Air Temperature: 79.3° F

Charlotte Amalie, VI - Return to List

NOAA/NOS/CO-OPS
Preliminary 6 min. Water Level vs. Predicted Plot
9751639 Charlotte Amalie, VI
from 09/08/2011 06:30 - 09/11/2011 06:30



Predicted WL — (Obs-Pred) —
Observed WL — HAT —

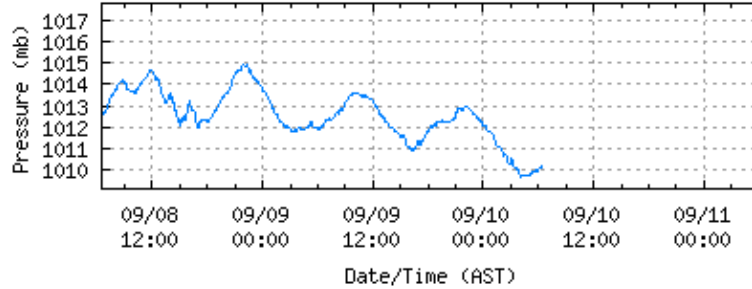
Last Observed Sample: 09/10/2011 06:24 (AST)

Relative to MLLW: Observed: 0.74 ft. Predicted: 0.61 ft. Residual: 0.13 ft.

Historical Maximum Water Level: Sep 16 1995, 2.93 ft. above MHHW

[Charlotte Amalie, VI - Return to List](#)

NOAA/NOS/CO-OPS
Barometric Pressure Plot
9751639 Charlotte Amalie, VI
from 09/08/2011 06:30 - 09/11/2011 06:30



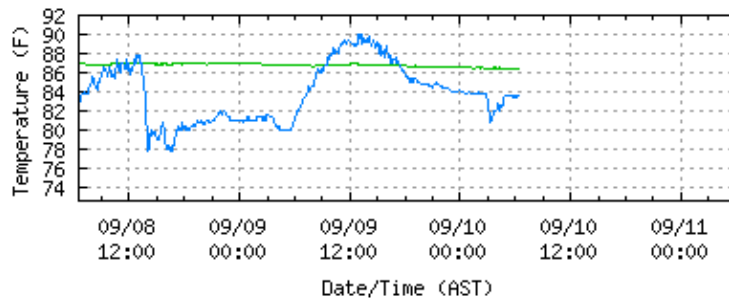
barometric pressure —

Last Observed Sample: 09/10/2011 06:24 (AST)

Barometric Pressure: 1010.1 mb

[Charlotte Amalie, VI - Return to List](#)

NOAA/NOS/CO-OPS
Air/Water Temperature Plot
9751639 Charlotte Amalie, VI
from 09/08/2011 06:30 - 09/11/2011 06:30

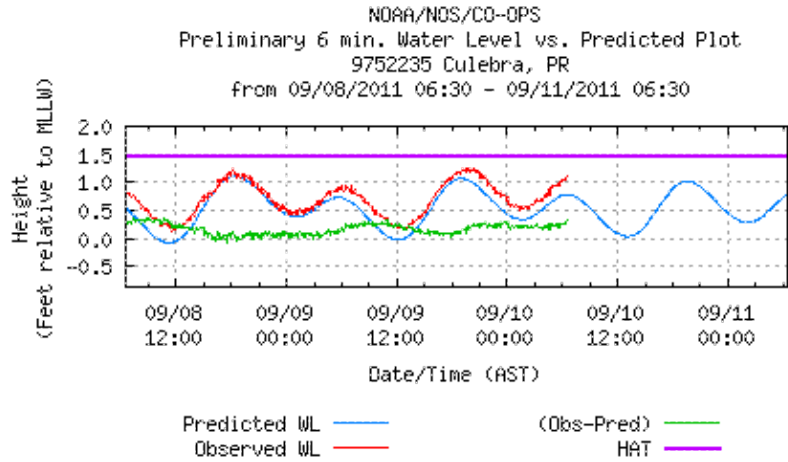


water temp. — air temp —

Last Observed Sample: 09/10/2011 06:24 (AST)

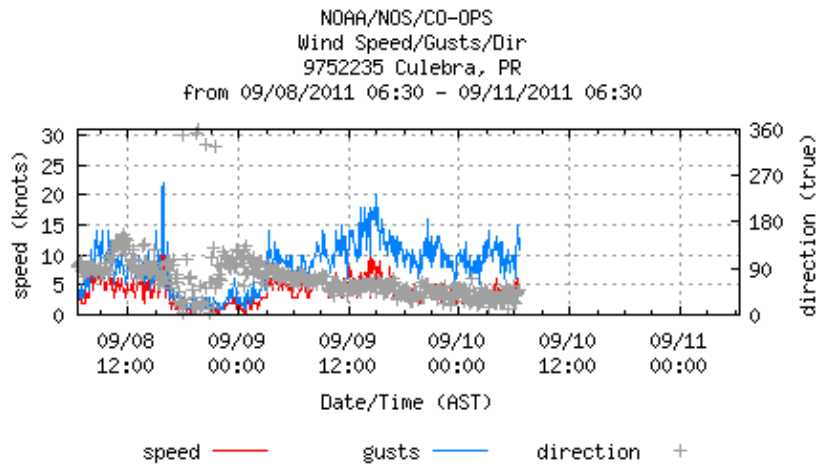
Water Temperature: 86.4° F Air Temperature: 83.5° F

Culebra, PR - Return to List



Last Observed Sample: 09/10/2011 06:30 (AST)
 Relative to MLLW: **Observed: 1.11 ft.** **Predicted: 0.78 ft.** **Residual: 0.33 ft.**
 Historical Maximum Water Level: Nov 6 2006, 0.85 ft. above MHHW

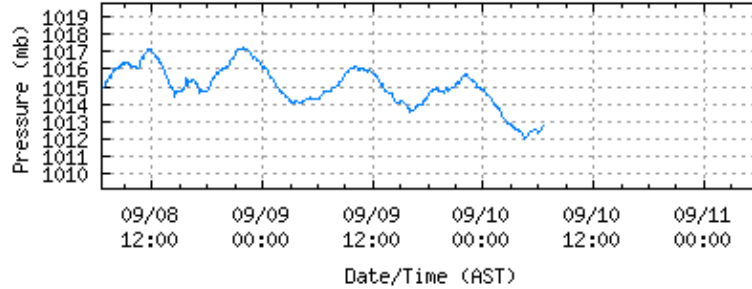
Culebra, PR - Return to List



Last Observed Sample: 09/10/2011 06:30 (AST)
Wind Speed: 4 knots **Gusts: 11 knots** **Direction: 47° T**

Culebra, PR - Return to List

NOAA/NOS/CO-OPS
Barometric Pressure Plot
9752235 Culebra, PR
from 09/08/2011 06:30 - 09/11/2011 06:30



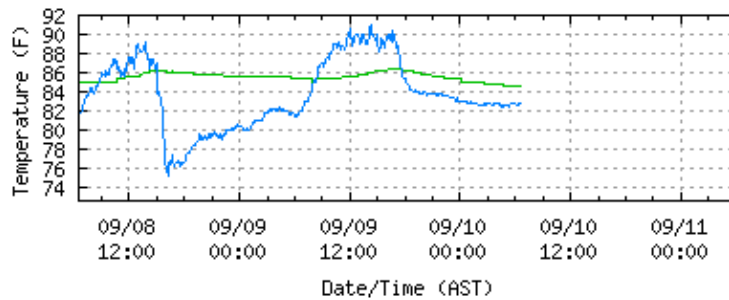
barometric pressure —

Last Observed Sample: 09/10/2011 06:30 (AST)

Barometric Pressure: 1012.7 mb

Culebra, PR - Return to List

NOAA/NOS/CO-OPS
Air/Water Temperature Plot
9752235 Culebra, PR
from 09/08/2011 06:30 - 09/11/2011 06:30

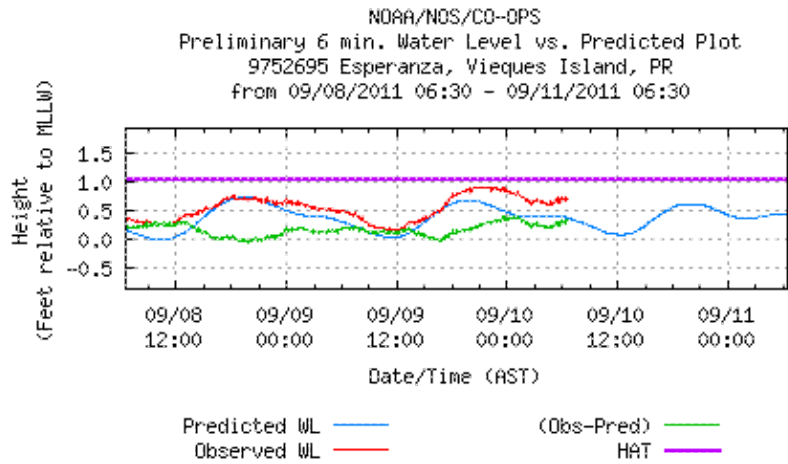


water temp. — air temp —

Last Observed Sample: 09/10/2011 06:30 (AST)

Water Temperature: 84.6° F Air Temperature: 82.8° F

Esperanza, Vieques Island, PR - Return to List

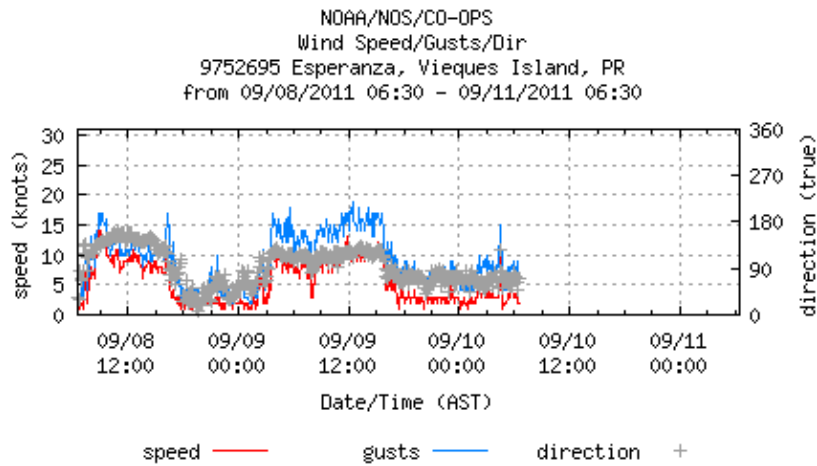


Last Observed Sample: 09/10/2011 06:30 (AST)

Relative to MLLW: **Observed: 0.72 ft.** **Predicted: 0.38 ft.** **Residual: 0.34 ft.**

Historical Maximum Water Level: Aug 30 2010, 0.84 ft. above MHHW

Esperanza, Vieques Island, PR - Return to List

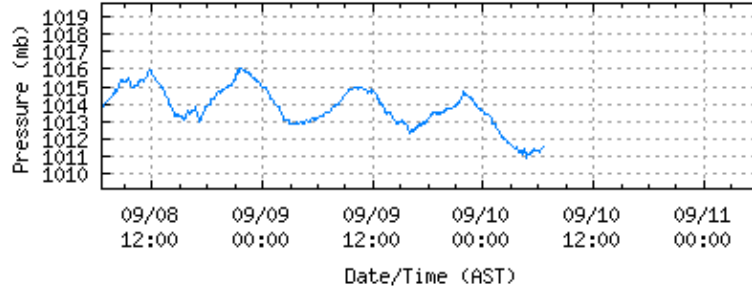


Last Observed Sample: 09/10/2011 06:30 (AST)

Wind Speed: 2 knots **Gusts: 5 knots** **Direction: 72° T**

[Esperanza, Vieques Island, PR - Return to List](#)

NOAA/NOS/CO-OPS
Barometric Pressure Plot
9752695 Esperanza, Vieques Island, PR
from 09/08/2011 06:30 - 09/11/2011 06:30



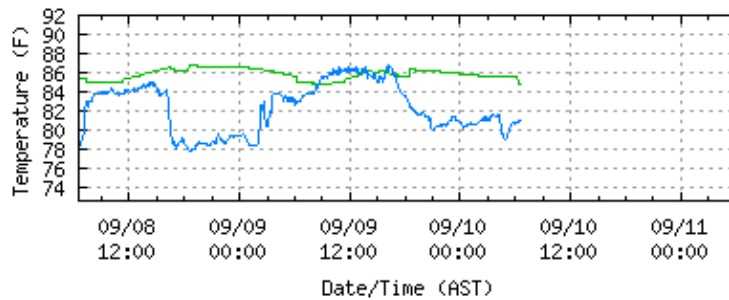
barometric pressure —

Last Observed Sample: 09/10/2011 06:30 (AST)

Barometric Pressure: 1011.5 mb

[Esperanza, Vieques Island, PR - Return to List](#)

NOAA/NOS/CO-OPS
Air/Water Temperature Plot
9752695 Esperanza, Vieques Island, PR
from 09/08/2011 06:30 - 09/11/2011 06:30

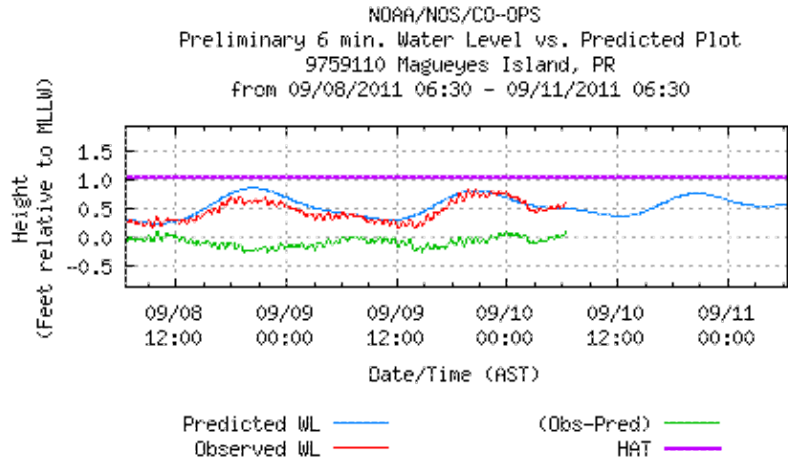


water temp. — air temp —

Last Observed Sample: 09/10/2011 06:30 (AST)

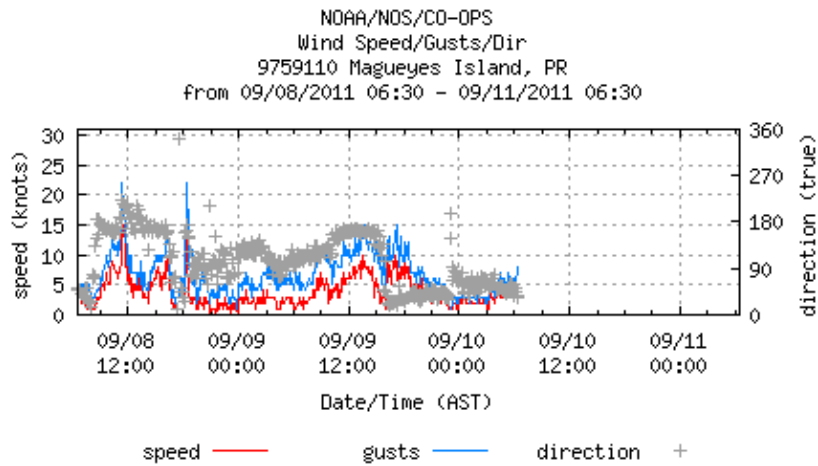
Water Temperature: 84.7° F Air Temperature: 81.1° F

Magueyes Island, PR - Return to List



Last Observed Sample: 09/10/2011 06:24 (AST)
 Relative to MLLW: **Observed: 0.59 ft.** **Predicted: 0.50 ft.** **Residual: 0.09 ft.**
 Historical Maximum Water Level: Sep 22 1998, 1.6 ft. above MHHW

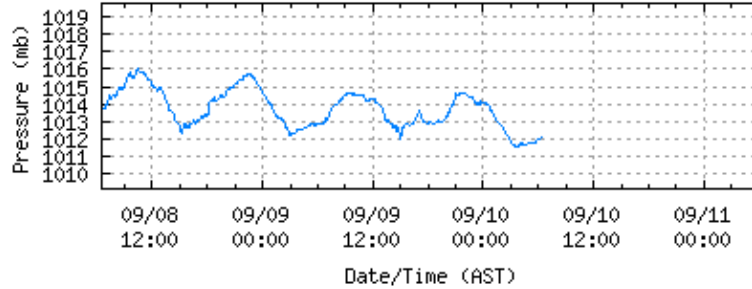
Magueyes Island, PR - Return to List



Last Observed Sample: 09/10/2011 06:24 (AST)
Wind Speed: 4 knots **Gusts: 8 knots** Direction: 34° T

Magueyes Island, PR - Return to List

NOAA/NOS/CO-OPS
Barometric Pressure Plot
9759110 Magueyes Island, PR
from 09/08/2011 06:30 - 09/11/2011 06:30



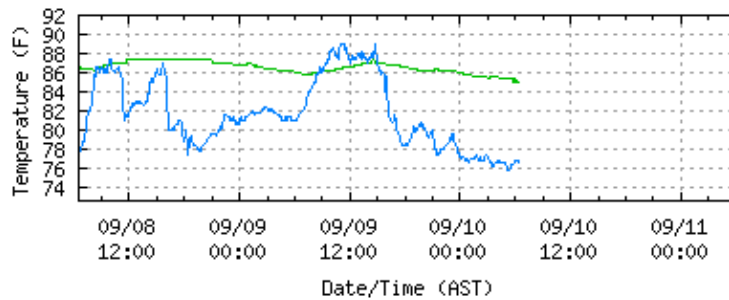
barometric pressure —

Last Observed Sample: 09/10/2011 06:24 (AST)

Barometric Pressure: 1012.1 mb

Magueyes Island, PR - Return to List

NOAA/NOS/CO-OPS
Air/Water Temperature Plot
9759110 Magueyes Island, PR
from 09/08/2011 06:30 - 09/11/2011 06:30

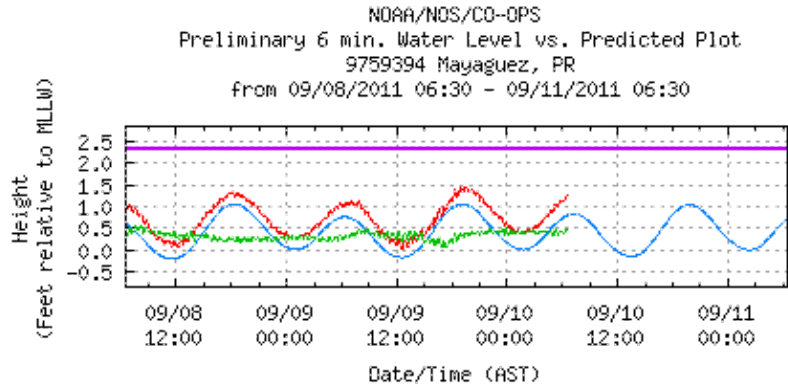


water temp. — air temp —

Last Observed Sample: 09/10/2011 06:24 (AST)

Water Temperature: 85.1° F Air Temperature: 76.6° F

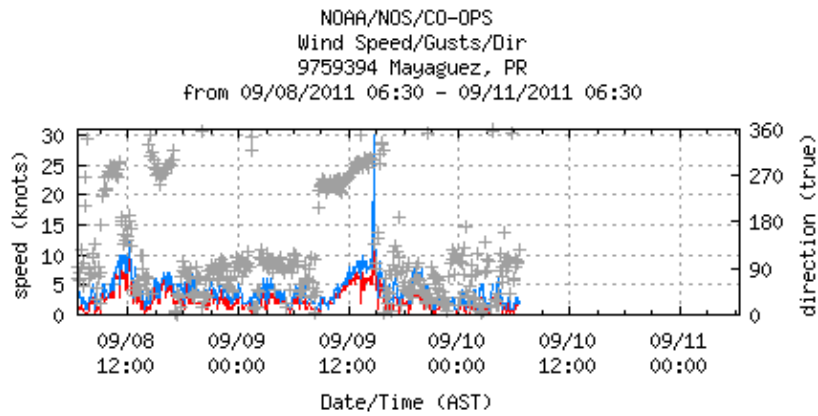
Mayaguez, PR - Return to List



Predicted WL ——— (Obs-Pred) ———
 Observed WL ——— HAT ———

Last Observed Sample: 09/10/2011 06:30 (AST)
 Relative to MLLW: **Observed: 1.25 ft. Predicted: 0.79 ft. Residual: 0.46 ft.**
 Historical Maximum Water Level: , 0 ft. above MHHW

Mayaguez, PR - Return to List

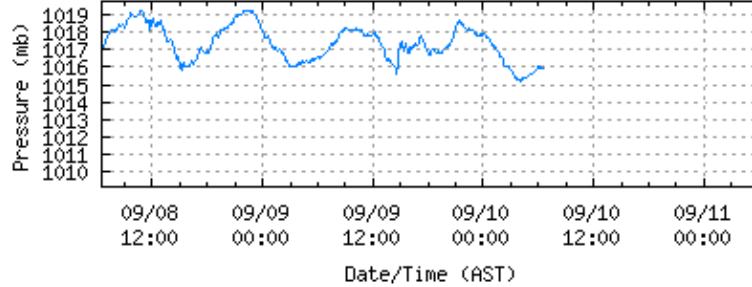


speed ——— gusts ——— direction +

Last Observed Sample: 09/10/2011 06:30 (AST)
Wind Speed: 2 knots Gusts: 2 knots Direction: 128° T

Mayaguez, PR - Return to List

NOAA/NOS/CO-OPS
Barometric Pressure Plot
9759394 Mayaguez, PR
from 09/08/2011 06:30 - 09/11/2011 06:30



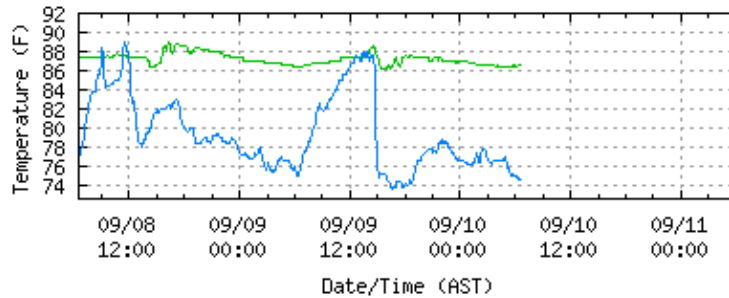
barometric pressure —

Last Observed Sample: 09/10/2011 06:30 (AST)

Barometric Pressure: 1015.9 mb

Mayaguez, PR - Return to List

NOAA/NOS/CO-OPS
Air/Water Temperature Plot
9759394 Mayaguez, PR
from 09/08/2011 06:30 - 09/11/2011 06:30

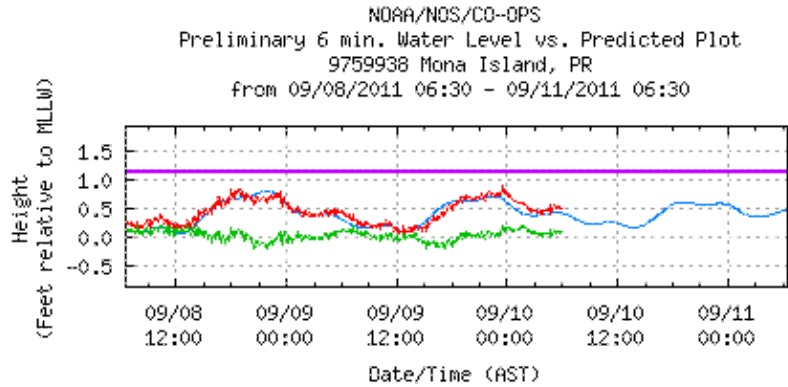


water temp. — air temp —

Last Observed Sample: 09/10/2011 06:30 (AST)

Water Temperature: 86.5° F Air Temperature: 74.5° F

Mona Island, PR - Return to List



Predicted WL ——— (Obs-Pred) ———
Observed WL ——— HAT ———

Last Observed Sample: 09/10/2011 05:54 (AST)

Relative to MLLW: **Observed: 0.52 ft.** **Predicted: 0.43 ft.** **Residual: 0.09 ft.**

Historical Maximum Water Level: Dec 23 2010, 1.26 ft. above MHHW

Center for Operational Oceanographic Products & Services (CO-OPS) | National Ocean Service (NOS)
National Oceanic and Atmospheric Administration | U.S. Department of Commerce