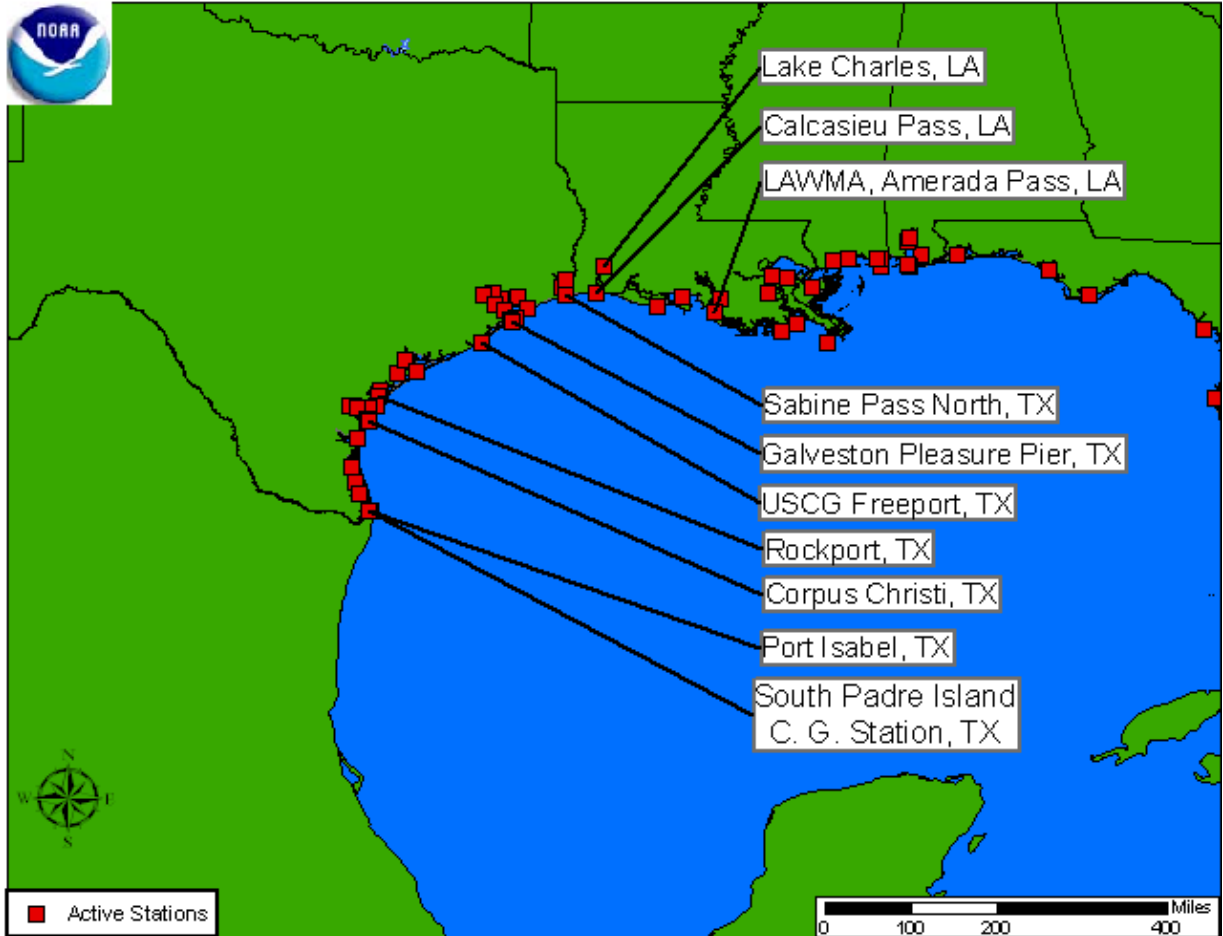




Tropical Storm HERMINE QuickLook
Posted: 05:00 CDT 09/07/2010

NOAA and NOAA Partnership Stations Relative to the Storm



Storm Analysis

As of 09/07/2010 05:30 CDT, water levels from southern Texas to central Louisiana are still elevated up to 1.0 above predicted. Wind speeds generally range from 10 to 32 knots with some gusts over 42 knots recorded at Corpus Christi. Barometric pressure is steady or gradually falling across the regions.

Water Level and Meteorological plots available below are updated automatically. Water level predictions relative to Mean Lower Low Water are:

Port Isabel, TX: Next predicted high tide is 1.43 ft (0.44 m) at 09/07/2010 14:35 CDT.

South Padre, TX: Next predicted high tide is 1.34 ft (0.41 m) at 09/07/2010 14:05 CDT.

Corpus Christi, TX: Next predicted high tide is 1.72 ft (0.53 m) at 09/07/2010 13:49 CDT.

Rockport, TX: Next predicted high tide is 0.45 ft (0.14 m) at 09/07/2010 15:32 CDT.

USCG Freeport, TX: Next predicted high tide is 1.70 ft (0.52 m) at 09/07/2010 14:29 CDT.

Galveston Pleasure Pier, TX: Next predicted high tide is 2.14 ft (0.65 m) at 09/07/2010 14:46 CDT.

Sabine Pass North, TX: Next predicted high tide is 1.91 ft (0.58 m) at 09/07/2010 14:56 CDT.

Calcasieu Pass, LA: Next predicted high tide is 2.22 ft (0.68 m) at 09/07/2010 13:57 CDT.

Lake Charles, LA: Next predicted high tide is 1.14 ft (0.35 m) at 09/07/2010 08:31 CDT.

LAWMA Amerada Pass, LA: Next predicted high tide is 1.41 ft (0.43 m) at 09/07/2010 15:18 CDT.

For additional data, please see the [Center for Operational Oceanographic Products & Services](#) website. For more information or archived products and reports, please see the [Storm QuickLook](#) Homepage.

Analyst:WFR

SELECT NATIONAL HURRICANE CENTER ADVISORY INFORMATION:

**TROPICAL STORM HERMINE ADVISORY NUMBER 6
400 AM CDT TUE SEP 07 2010**

...HERMINE LASHES DEEP SOUTH TEXAS...STRONG WINDS AND HEAVY RAIN SPREADING NORTHWARD...

WATCHES AND WARNINGS

CHANGES WITH THIS ADVISORY...

SUMMARY OF WATCHES AND WARNINGS IN EFFECT...

A TROPICAL STORM WARNING IS IN EFFECT FOR...

*** THE MOUTH OF THE RIO GRANDE NORTHWARD TO PORT OCONNOR TEXAS**

FOR STORM INFORMATION SPECIFIC TO YOUR AREA...INCLUDING POSSIBLE INLAND WATCHES AND WARNINGS...PLEASE MONITOR PRODUCTS ISSUED BY YOUR LOCAL NATIONAL WEATHER SERVICE FORECAST OFFICE.

DISCUSSION AND 48-HOUR OUTLOOK

AT 400 AM CDT THE CENTER OF TROPICAL STORM HERMINE WAS LOCATED NEAR

LATITUDE 27.0 NORTH...LONGITUDE 98.0 WEST. HERMINE IS MOVING TOWARD THE NORTH-NORTHWEST NEAR 17 MPH. A TURN TOWARD THE NORTH AND THEN NORTH-NORTHEAST WITH A DECREASE IN FORWARD SPEED IS EXPECTED OVER THE NEXT COUPLE OF DAYS.

MAXIMUM SUSTAINED WINDS HAVE DECREASED TO NEAR 50 MPH WITH HIGHER GUSTS. ADDITIONAL WEAKENING IS FORECAST DURING THE NEXT 48 HOURS...AND HERMINE IS EXPECTED TO BECOME A TROPICAL DEPRESSION BY THIS EVENING. TROPICAL STORM FORCE WINDS EXTEND OUTWARD UP TO 105 MILES. MAINLY TO THE NORTHEAST OF THE CENTER. A SUSTAINED WIND OF 55 MPH AND A GUST TO 72 MPH WERE REPORTED AT HARLINGEN TEXAS AROUND 100 AM CDT.

HAZARDS AFFECTING LAND

WIND...TROPICAL STORM CONDITIONS ARE OCCURRING OVER PORTIONS OF DEEP SOUTH TEXAS. THESE CONDITIONS WILL CONTINUE TO SPREAD NORTHWARD ACROSS PORTIONS OF SOUTHERN TEXAS NEAR AND ALONG THE PATH OF HERMINE THROUGH THIS MORNING AND EARLY AFTERNOON.

STORM SURGE...STORM SURGE WILL RAISE WATER LEVELS BY AS MUCH AS 1 TO 3 FEET ABOVE GROUND LEVEL ALONG THE IMMEDIATE COAST OF SOUTHERN TEXAS. WATER LEVELS WILL BEGIN TO RECEDE LATER TODAY AS HERMINE MOVES FARTHER INLAND.

RAINFALL...HERMINE IS EXPECTED TO PRODUCE TOTAL RAINFALL ACCUMULATIONS OF 4 TO 8 INCHES...WITH ISOLATED MAXIMUM AMOUNTS OF 12 INCHES POSSIBLE...FROM SOUTHERN TEXAS NORTHWARD THROUGH CENTRAL AND NORTHERN TEXAS...AND OVER CENTRAL AND EASTERN OKLAHOMA. THESE RAINS ARE EXPECTED TO SPREAD NORTHEASTWARD ACROSS SOUTHEASTERN KANSAS...NORTHWESTERN ARKANSAS...AND MISSOURI DURING THE NEXT FEW DAYS. THE HEAVY RAINFALL COULD CAUSE LIFE-THREATENING FLASH FLOODS.

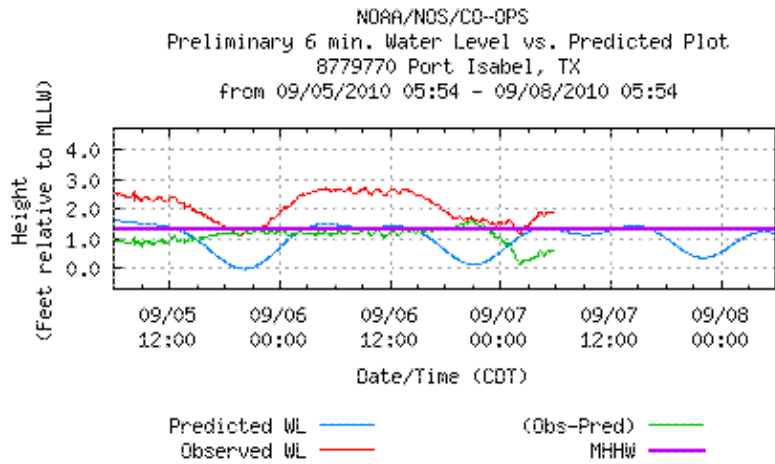
TORNADOES...ISOLATED TORNADOES ARE POSSIBLE ACROSS PORTIONS OF SOUTHEAST TEXAS THROUGH TODAY.

FORECASTER BERG/BROWN

For the purpose of timely release, data contained within this QuickLook have undergone a "limited" NOS Quality Assurance/Control; however, the data have not yet undergone final verification. All data subject to NOS verification.

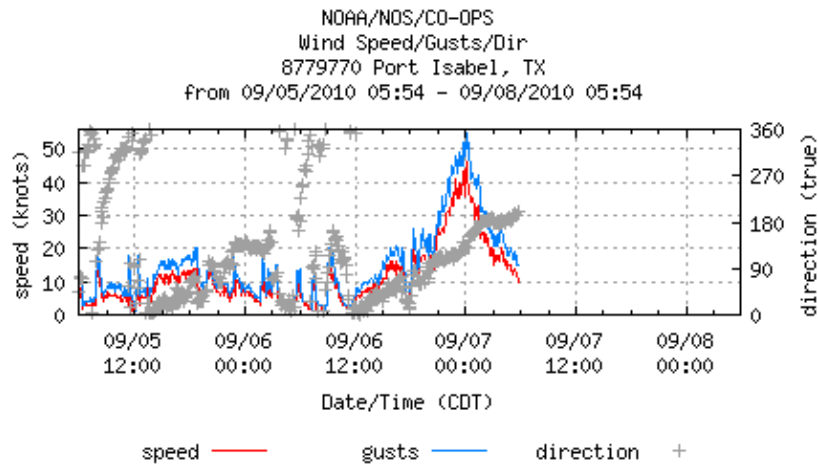
Jump to: [Port Isabel - Water Level](#), [Port Isabel - Winds](#), [Port Isabel - Barometric](#), [Port Isabel - Air/Water Temp](#), [South Padre Island C.G Station - Water Level](#), [Corpus Christi - Water Level](#), [Corpus Christi - Winds](#), [Corpus Christi - Barometric](#), [Corpus Christi - Air/Water Temp](#), [Rockport - Water Level](#), [Rockport - Winds](#), [Rockport - Barometric](#), [USCG Freeport - Water Level](#), [USCG Freeport - Winds](#), [USCG Freeport - Barometric](#), [USCG Freeport - Air/Water Temp](#), [Galveston Pleasure Pier - Water Level](#), [Galveston Pleasure Pier - Winds](#), [Galveston Pleasure Pier - Barometric](#), [Galveston Pleasure Pier - Air/Water Temp](#), [Sabine Pass North - Water Level](#), [Sabine Pass North - Winds](#), [Sabine Pass North - Barometric](#), [Calcasieu Pass - Water Level](#), [Lake Charles - Water Level](#), [Lake Charles - Barometric](#), [LAWMA, Amerada Pass - Water Level](#), [LAWMA, Amerada Pass - Winds](#),

Port Isabel, TX - [Return to List](#)



Last Observed Sample: 09/07/2010 05:42 (CDT)
 Relative to **MLLW**: **Observed: 1.90 ft. Predicted: 1.31 ft. Residual: 0.59 ft.**
 Historical Maximum Water Level: Aug 9 1980, 5.67 ft. above **MHHW**

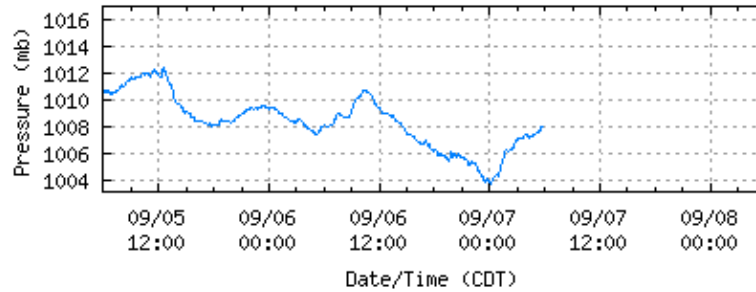
Port Isabel, TX - [Return to List](#)



Last Observed Sample: 09/07/2010 05:42 (CDT)
Wind Speed: 10 knots Gusts: 15 knots Direction: 200° T

Port Isabel, TX - [Return to List](#)

NOAA/NOS/CO-OPS
Barometric Pressure Plot
8779770 Port Isabel, TX
from 09/05/2010 05:54 - 09/08/2010 05:54



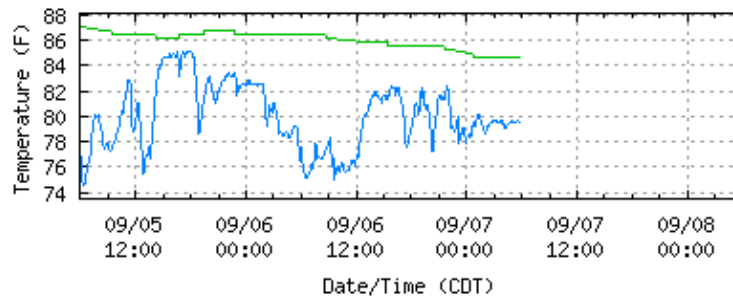
barometric pressure —

Last Observed Sample: 09/07/2010 05:42 (CDT)

Barometric Pressure: 1008.1 mb

Port Isabel, TX - [Return to List](#)

NOAA/NOS/CO-OPS
Air/Water Temperature Plot
8779770 Port Isabel, TX
from 09/05/2010 05:54 - 09/08/2010 05:54

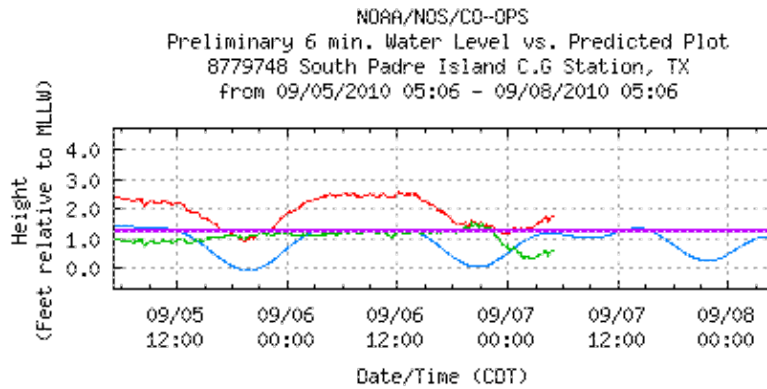


water temp. — air temp —

Last Observed Sample: 09/07/2010 05:42 (CDT)

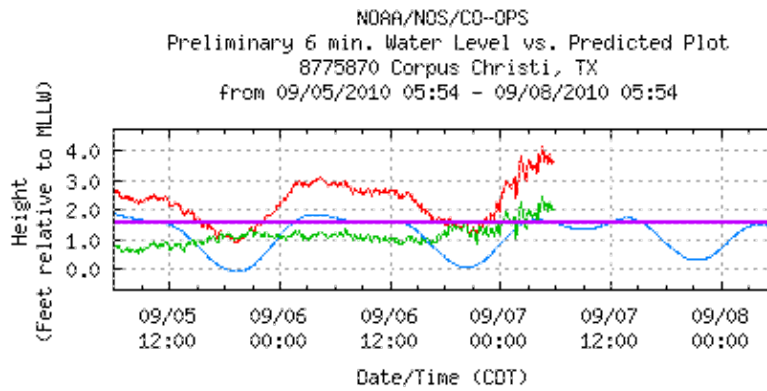
Water Temperature: 84.6° F Air Temperature: 79.5° F

South Padre Island C.G Station, TX - [Return to List](#)



Last Observed Sample: 09/07/2010 04:54 (CDT)
Relative to **MLLW**: **Observed: 1.72 ft. Predicted: 1.17 ft. Residual: 0.55 ft.**
Historical Maximum Water Level: , 0 ft. above **MHHW**

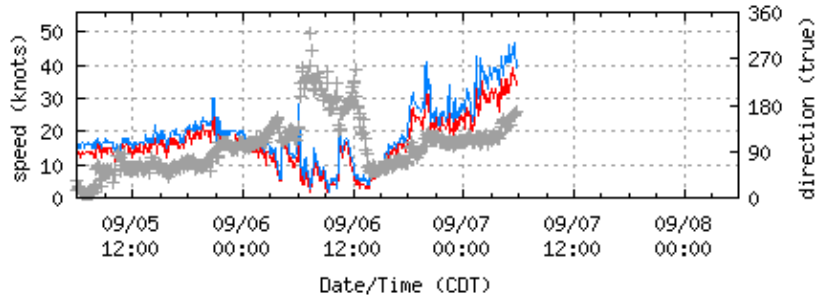
Corpus Christi, TX - [Return to List](#)



Last Observed Sample: 09/07/2010 05:42 (CDT)
Relative to **MLLW**: **Observed: 3.61 ft. Predicted: 1.57 ft. Residual: 2.04 ft.**
Historical Maximum Water Level: Sep 10 1998, 3.33 ft. above **MHHW**

Corpus Christi, TX - [Return to List](#)

NOAA/NDS/CO-OPS
Wind Speed/Gusts/Dir
8775870 Corpus Christi, TX
from 09/05/2010 05:54 - 09/08/2010 05:54



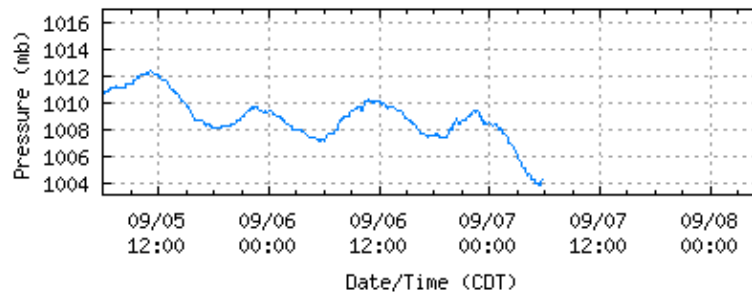
speed — gusts — direction +

Last Observed Sample: 09/07/2010 05:42 (CDT)

Wind Speed: 34 knots Gusts: 39 knots Direction: 168° T

Corpus Christi, TX - [Return to List](#)

NOAA/NDS/CO-OPS
Barometric Pressure Plot
8775870 Corpus Christi, TX
from 09/05/2010 05:54 - 09/08/2010 05:54



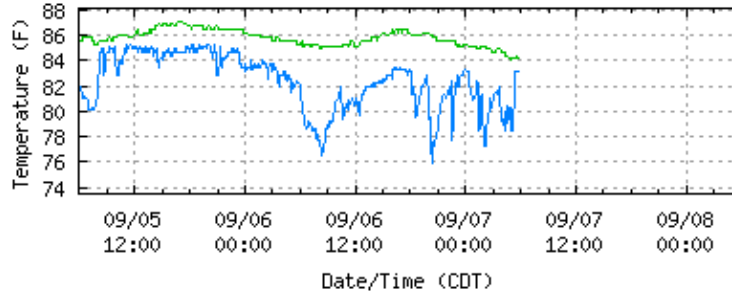
barometric pressure —

Last Observed Sample: 09/07/2010 05:42 (CDT)

Barometric Pressure: 1004.3 mb

Corpus Christi, TX - [Return to List](#)

NOAA/NOS/CO-OPS
Air/Water Temperature Plot
8775870 Corpus Christi, TX
from 09/05/2010 05:54 - 09/08/2010 05:54



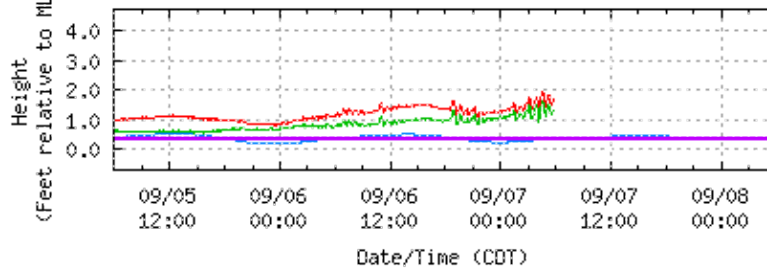
water temp. — green — air temp — blue —

Last Observed Sample: 09/07/2010 05:42 (CDT)

Water Temperature: 84.2° F Air Temperature: 83.1° F

Rockport, TX - [Return to List](#)

NOAA/NOS/CO-OPS
Preliminary 6 min. Water Level vs. Predicted Plot
8774770 Rockport, TX
from 09/05/2010 05:54 - 09/08/2010 05:54



Predicted WL — blue — (Obs-Pred) — green —
Observed WL — red — MHHW — purple —

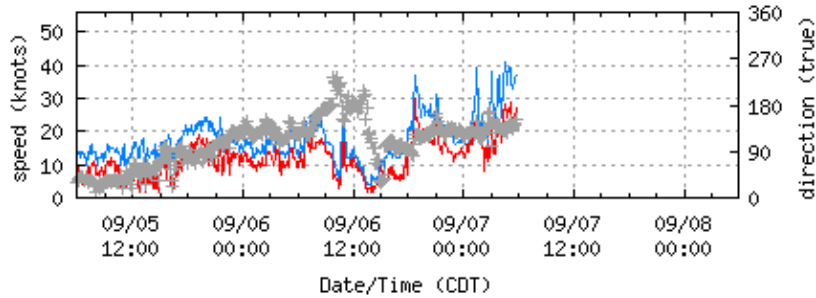
Last Observed Sample: 09/07/2010 05:42 (CDT)

Relative to **MLLW**: Observed: 1.66 ft. Predicted: 0.34 ft. Residual: 1.32 ft.

Historical Maximum Water Level: Aug 10 1980, 3.74 ft. above **MHHW**

Rockport, TX - [Return to List](#)

NOAA/NDS/CO-OPS
Wind Speed/Gusts/Dir
8774770 Rockport, TX
from 09/05/2010 05:54 - 09/08/2010 05:54



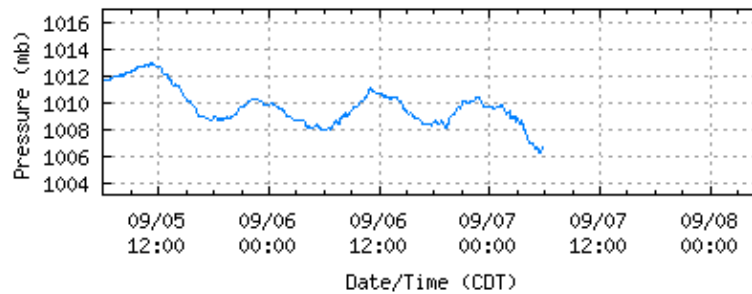
speed — gusts — direction +

Last Observed Sample: 09/07/2010 05:42 (CDT)

Wind Speed: 27 knots Gusts: 37 knots Direction: 152° T

Rockport, TX - [Return to List](#)

NOAA/NDS/CO-OPS
Barometric Pressure Plot
8774770 Rockport, TX
from 09/05/2010 05:54 - 09/08/2010 05:54

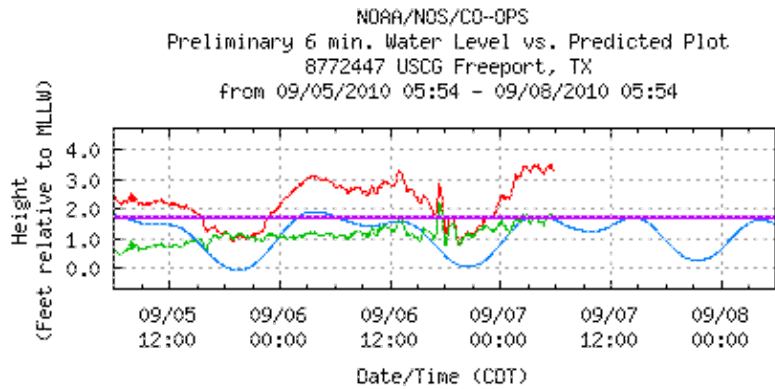


barometric pressure —

Last Observed Sample: 09/07/2010 05:42 (CDT)

Barometric Pressure: 1006.7 mb

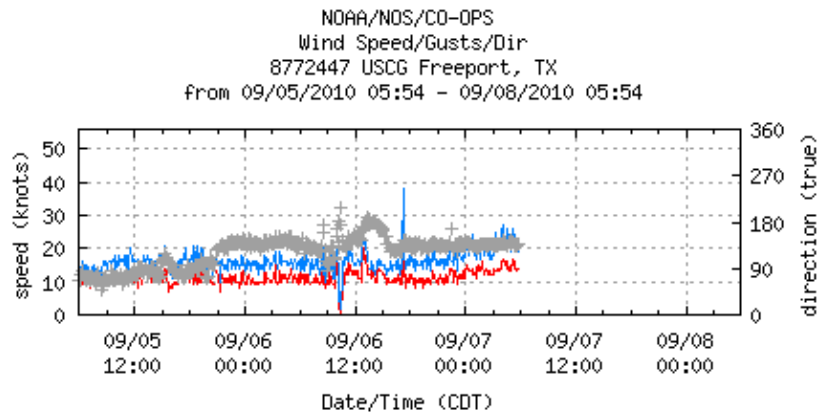
USCG Freeport, TX - [Return to List](#)



Predicted WL ——— (Obs-Pred) ———
 Observed WL ——— MHHW ———

Last Observed Sample: 09/07/2010 05:42 (CDT)
 Relative to **MLLW**: **Observed: 3.30 ft. Predicted: 1.64 ft. Residual: 1.66 ft.**
 Historical Maximum Water Level: Sep 12 2008, 5.6 ft. above **MHHW**

USCG Freeport, TX - [Return to List](#)

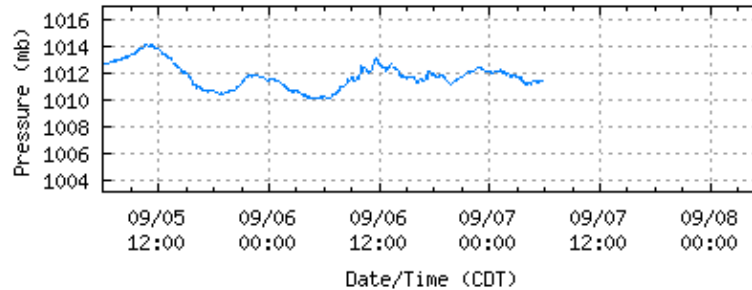


speed ——— gusts ——— direction +

Last Observed Sample: 09/07/2010 05:42 (CDT)
Wind Speed: 14 knots Gusts: 19 knots Direction: 139° T

USCG Freeport, TX - [Return to List](#)

NOAA/NDS/CO-OPS
Barometric Pressure Plot
8772447 USCG Freeport, TX
from 09/05/2010 05:54 - 09/08/2010 05:54



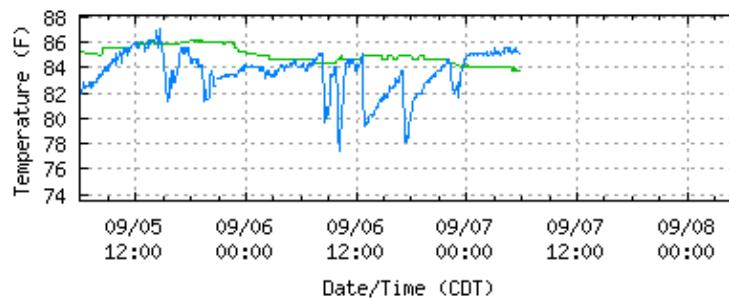
barometric pressure —

Last Observed Sample: 09/07/2010 05:42 (CDT)

Barometric Pressure: 1011.4 mb

USCG Freeport, TX - [Return to List](#)

NOAA/NDS/CO-OPS
Air/Water Temperature Plot
8772447 USCG Freeport, TX
from 09/05/2010 05:54 - 09/08/2010 05:54

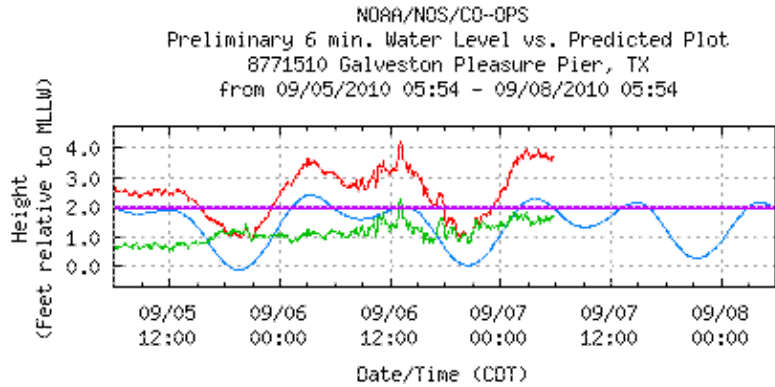


water temp. — air temp. —

Last Observed Sample: 09/07/2010 05:42 (CDT)

Water Temperature: 83.8° F Air Temperature: 85.1° F

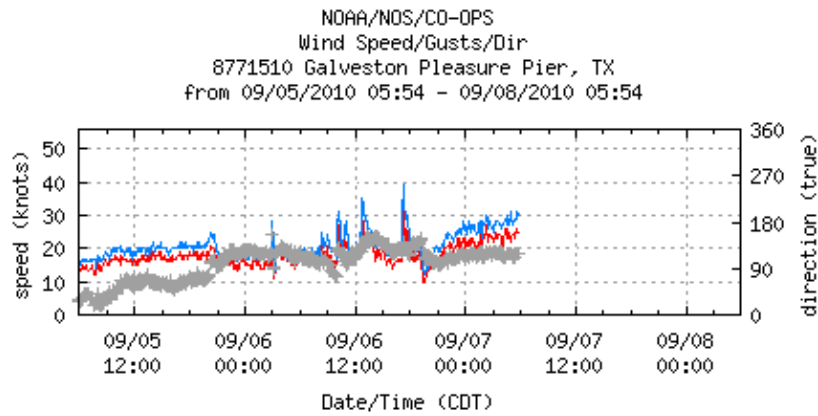
Galveston Pleasure Pier, TX - [Return to List](#)



Predicted WL ——— (Obs-Pred) ———
 Observed WL ——— MHHW ———

Last Observed Sample: 09/07/2010 05:42 (CDT)
 Relative to **MLLW**: **Observed: 3.67 ft. Predicted: 1.97 ft. Residual: 1.70 ft.**
 Historical Maximum Water Level: Sep 11 1961, 7.16 ft. above **MHHW**

Galveston Pleasure Pier, TX - [Return to List](#)

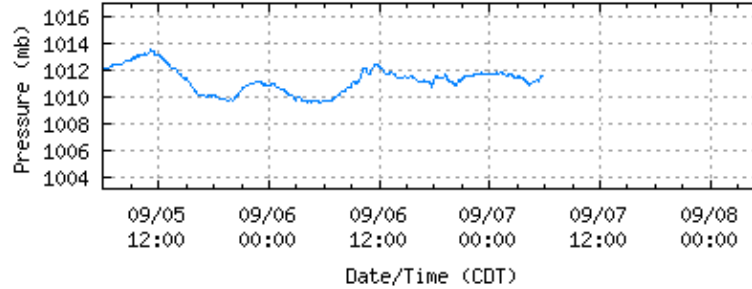


speed ——— gusts ——— direction +

Last Observed Sample: 09/07/2010 05:42 (CDT)
Wind Speed: 25 knots Gusts: 30 knots Direction: 119° T

Galveston Pleasure Pier, TX - [Return to List](#)

NOAA/NOS/CO-OPS
Barometric Pressure Plot
8771510 Galveston Pleasure Pier, TX
from 09/05/2010 05:54 - 09/08/2010 05:54



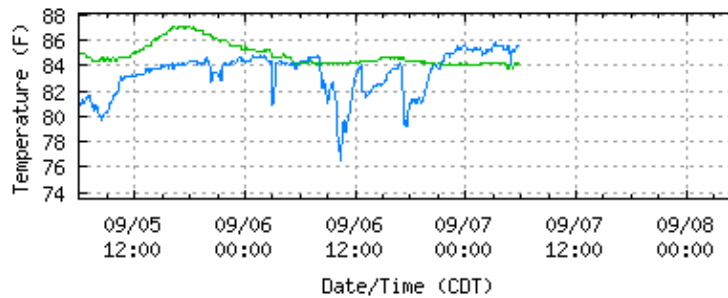
barometric pressure —

Last Observed Sample: 09/07/2010 05:42 (CDT)

Barometric Pressure: 1011.6 mb

Galveston Pleasure Pier, TX - [Return to List](#)

NOAA/NOS/CO-OPS
Air/Water Temperature Plot
8771510 Galveston Pleasure Pier, TX
from 09/05/2010 05:54 - 09/08/2010 05:54

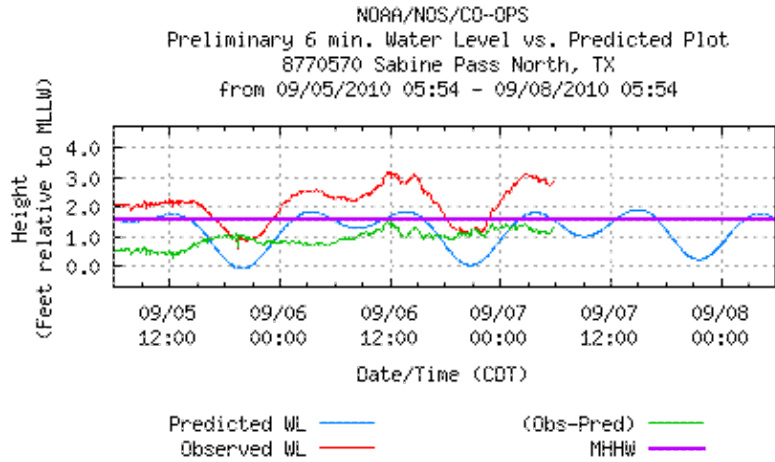


water temp. — air temp —

Last Observed Sample: 09/07/2010 05:42 (CDT)

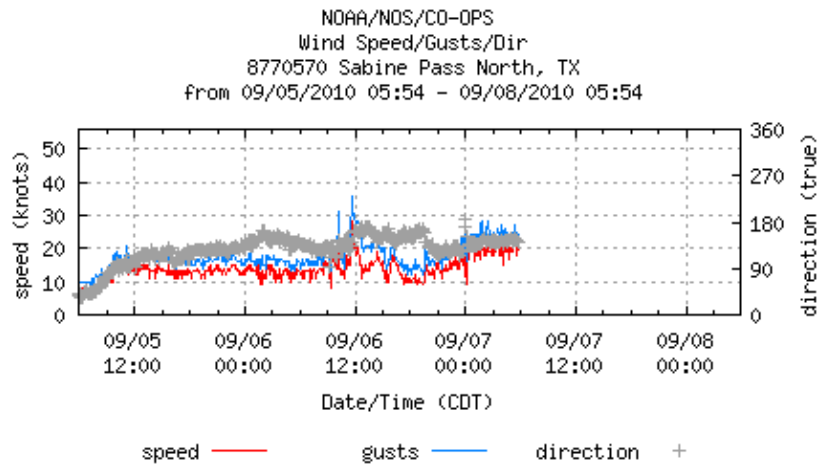
Water Temperature: 84.2° F Air Temperature: 85.5° F

Sabine Pass North, TX - [Return to List](#)



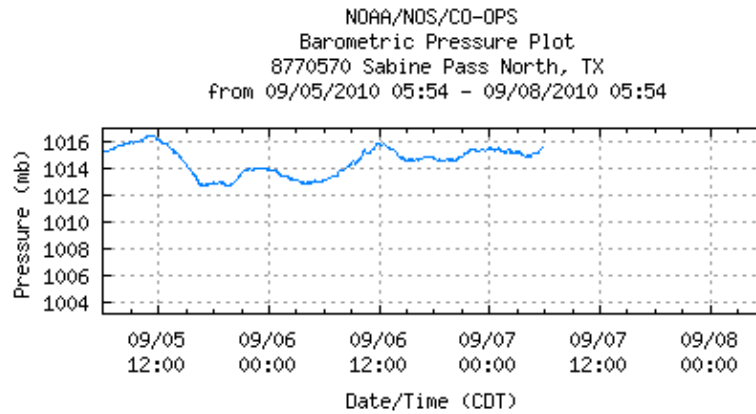
Last Observed Sample: 09/07/2010 05:42 (CDT)
 Relative to **MLLW**: **Observed: 2.85 ft. Predicted: 1.57 ft. Residual: 1.28 ft.**
 Historical Maximum Water Level: Sep 11 1998, 3.32 ft. above **MHHW**

Sabine Pass North, TX - [Return to List](#)



Last Observed Sample: 09/07/2010 05:42 (CDT)
Wind Speed: 20 knots Gusts: 24 knots Direction: 141° T

Sabine Pass North, TX - [Return to List](#)

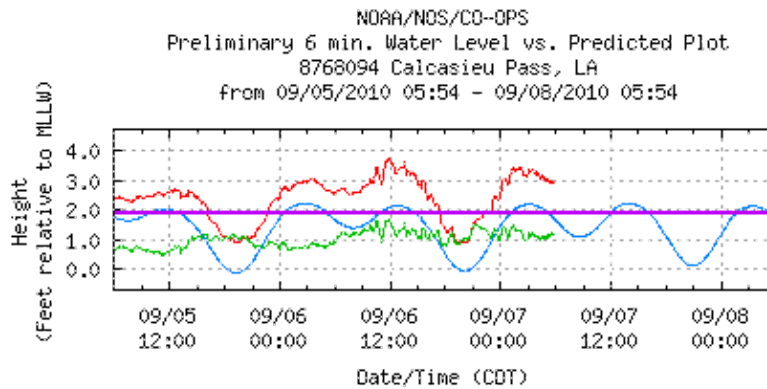


barometric pressure —

Last Observed Sample: 09/07/2010 05:42 (CDT)

Barometric Pressure: 1015.6 mb

Calcasieu Pass, LA - [Return to List](#)



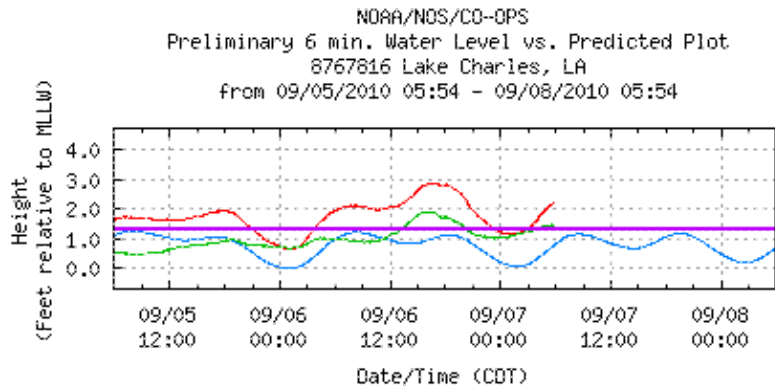
Predicted WL — (Obs-Pred) —
 Observed WL — MHHW —

Last Observed Sample: 09/07/2010 05:42 (CDT)

Relative to **MLLW**: **Observed: 2.90 ft.** **Predicted: 1.74 ft.** **Residual: 1.16 ft.**

Historical Maximum Water Level: Sep 13 2008, 9.95 ft. above **MHHW**

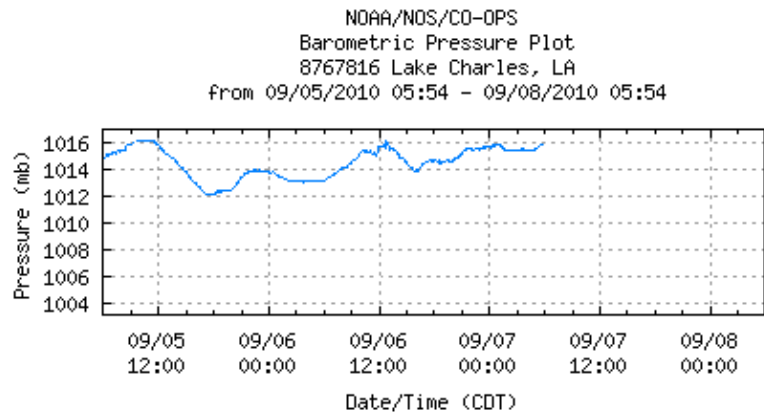
Lake Charles, LA - [Return to List](#)



Predicted WL — (Obs-Pred) —
 Observed WL — MHHW —

Last Observed Sample: 09/07/2010 05:42 (CDT)
 Relative to **MLLW**: **Observed: 2.19 ft. Predicted: 0.74 ft. Residual: 1.45 ft.**
 Historical Maximum Water Level: Oct 16 2006, 2.24 ft. above **MHHW**

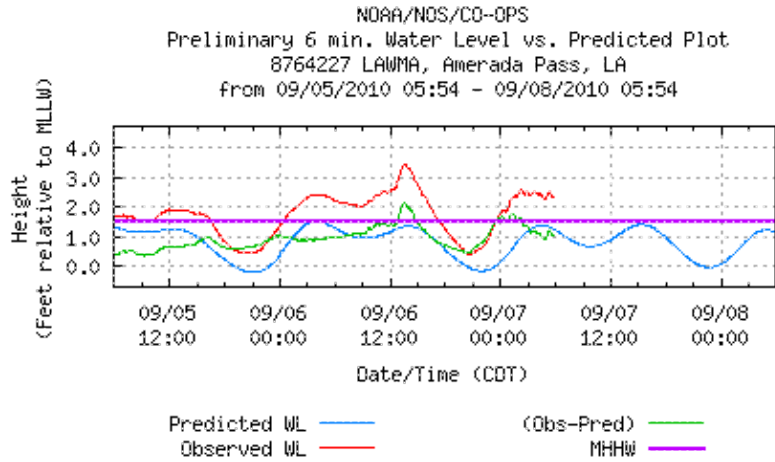
Lake Charles, LA - [Return to List](#)



barometric pressure —

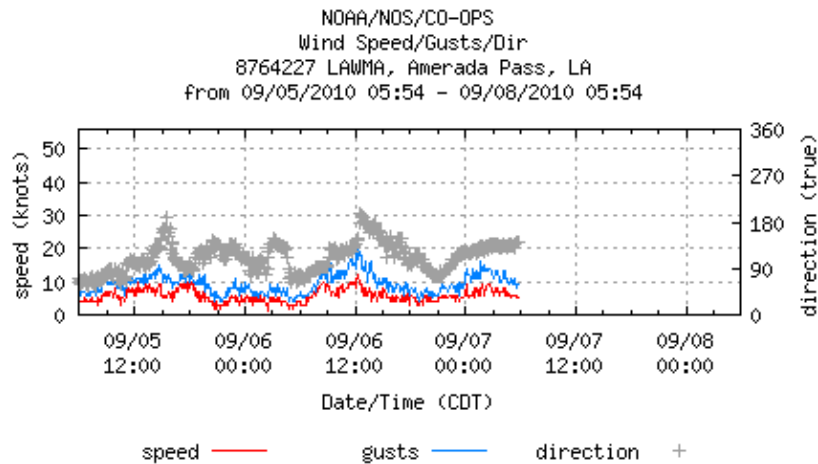
Last Observed Sample: 09/07/2010 05:42 (CDT)
Barometric Pressure: 1015.9 mb

LAWMA, Amerada Pass, LA - [Return to List](#)



Last Observed Sample: 09/07/2010 05:42 (CDT)
 Relative to **MLLW**: **Observed: 2.31 ft. Predicted: 1.25 ft. Residual: 1.06 ft.**
 Historical Maximum Water Level: Sep 12 2008, 6.01 ft. above **MHHW**

LAWMA, Amerada Pass, LA - [Return to List](#)



Last Observed Sample: 09/07/2010 05:42 (CDT)
Wind Speed: 5 knots Gusts: 9 knots Direction: 140° T

Tropical Storm HERMINE QuickLook, POSTED 05:00 CDT 09/07/2010

Center for Operational Oceanographic Products & Services (CO-OPS) | National Ocean Service (NOS)
National Oceanic and Atmospheric Administration | U.S. Department of Commerce