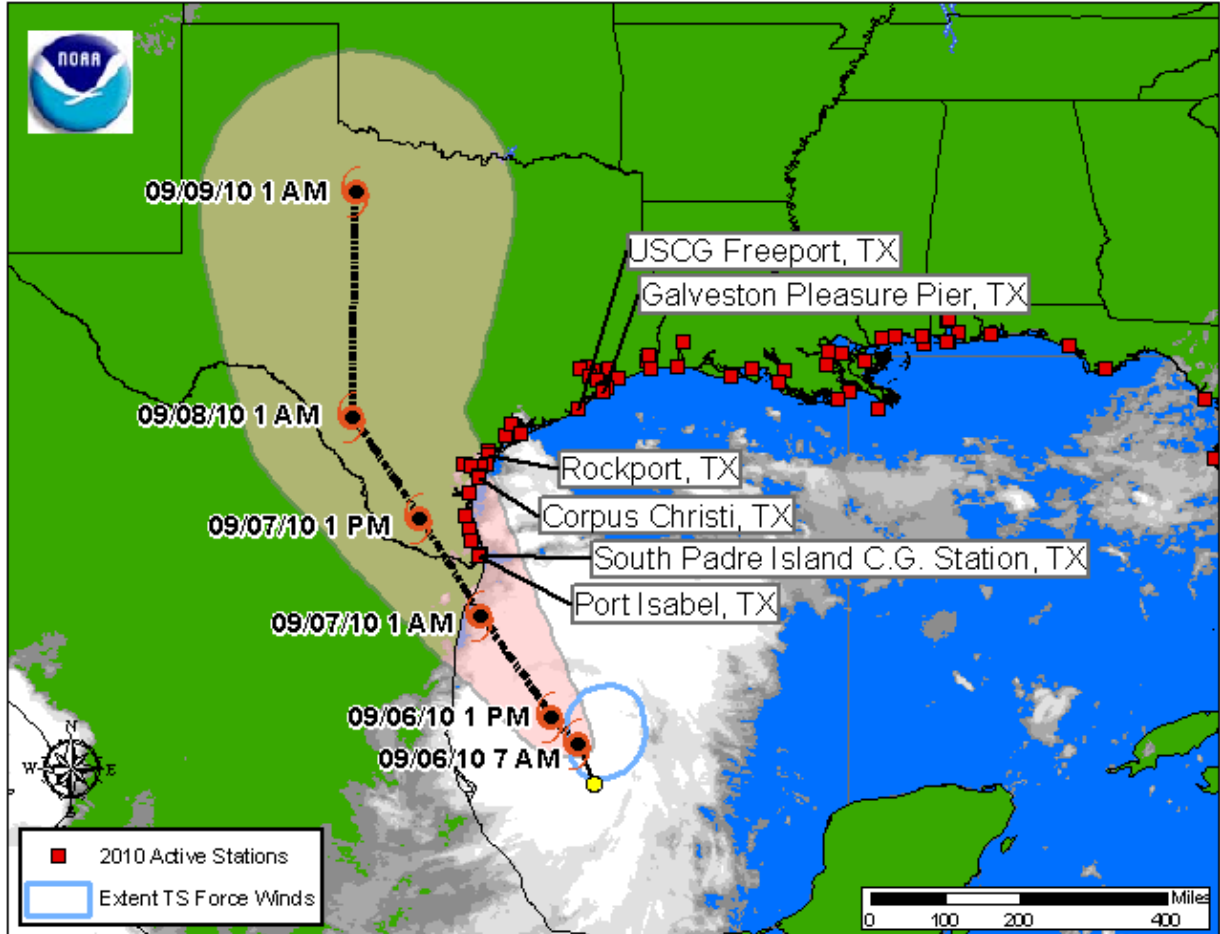




Tropical Storm HERMINE QuickLook  
Posted: 08:00 CDT 09/06/2010

NOAA and NOAA Partnership Stations Relative to the Storm



**Storm Analysis**

As of 08:00 CDT, water levels across southern Texas are rising and range from 0.75 to 1.25 above predicted. Wind speeds generally range from 5 to 15 knots with some gusts up to 25 knots. Barometric pressure is falling across the region.

Water Level and Meteorological plots available below are updated automatically. Water level predictions relative to Mean Lower Low Water are:

Port Isabel, TX: Next predicted high tides are 1.41 ft (0.43 m) at 09/06/2010 12:27 CDT and 1.34 ft (0.41 m) at 09/07/2010 04:46 CDT.

South Padre, TX: Next predicted high tides are 1.32 ft (0.40 m) at 09/06/2010 12:08 CDT and 1.17 ft (0.36 m) at 09/07/2010 04:30 CDT.

Corpus Christi, TX: Next predicted high tides are 1.64 ft (0.50 m) at 09/06/2010 12:07 CDT and 1.67 ft (0.51 m) at 09/07/2010 03:58 CDT.

Rockport, TX: Next predicted high tides are 0.49 ft (0.15 m) at 09/06/2010 13:55 CDT and 0.45 ft (0.14 m) at 09/07/2010 15:32 CDT.

USCG Freeport, TX: Next predicted high tides are 1.57 ft (0.48 m) at 09/06/2010 13:00 CDT and 1.77 ft (0.54 m) at 09/07/2010 04:00 CDT.

Galveston Pleasure Pier, TX: Next predicted high tides are 2.00 ft (0.61 m) at 09/06/2010 13:27 CDT and 2.28 ft (0.70 m) at 09/07/2010 03:46 CDT.

For additional data, please see the [Center for Operational Oceanographic Products & Services](#) website. For more information or archived products and reports, please see the [Storm QuickLook](#) Homepage.

Analyst:PFF

-----  
**SELECT NATIONAL HURRICANE CENTER ADVISORY INFORMATION:**

**TROPICAL STORM HERMINE INTERMEDIATE ADVISORY NUMBER 2A**

**700 AM CDT MON SEP 06 2010**

**...HERMINE A LITTLE STRONGER AS IT HEADS NORTHWARD...**

**WATCHES AND WARNINGS**

-----  
**A TROPICAL STORM WARNING IS IN EFFECT FOR...**

- \* THE COAST OF MEXICO FROM TAMPICO TO THE MOUTH OF THE RIO GRANDE**
- \* THE COAST OF TEXAS FROM THE MOUTH OF THE RIO GRANDE TO BAFFIN BAY**

**ADDITIONAL WATCHES OR WARNINGS COULD BE REQUIRED FOR PORTIONS OF SOUTHERN TEXAS LATER TODAY.**

**A TROPICAL STORM WARNING MEANS THAT TROPICAL STORM CONDITIONS ARE EXPECTED SOMEWHERE WITHIN THE WARNING AREA...IN THIS CASE WITHIN ABOUT 24 HOURS.**

**FOR STORM INFORMATION SPECIFIC TO YOUR AREA IN THE UNITED STATES...INCLUDING POSSIBLE INLAND WATCHES AND WARNINGS...PLEASE MONITOR PRODUCTS ISSUED BY YOUR LOCAL NATIONAL WEATHER SERVICE FORECAST OFFICE. FOR STORM INFORMATION SPECIFIC TO YOUR AREA OUTSIDE THE UNITED STATES...PLEASE MONITOR PRODUCTS ISSUED BY YOUR NATIONAL METEOROLOGICAL SERVICE.**

**DISCUSSION AND 48-HOUR OUTLOOK**

-----  
**AT 700 AM CDT THE CENTER OF TROPICAL STORM HERMINE WAS LOCATED ABOUT 280**

**MI SSE OF BROWNSVILLE TEXAS. HERMINE IS MOVING TOWARD THE NORTH NEAR 10 MPH. A TURN TOWARD THE NORTHWEST WITH AN INCREASE IN FORWARD SPEED IS EXPECTED TODAY. ON THE FORECAST TRACK...THE CENTER OF HERMINE IS EXPECTED TO APPROACH THE COAST OF NORTHEASTERN MEXICO OR EXTREME SOUTHERN TEXAS IN THE WARNING AREA EARLY TUESDAY MORNING.**

**MAXIMUM SUSTAINED WINDS HAVE INCREASED TO NEAR 45 MPH WITH HIGHER GUSTS. SOME ADDITIONAL STRENGTHENING IS FORECAST PRIOR TO LANDFALL.**

**TROPICAL STORM FORCE WINDS EXTEND OUTWARD UP TO 105 MILES TO THE EAST OF THE CENTER.**

**ESTIMATED MINIMUM CENTRAL PRESSURE IS 999 MB...29.50 INCHES.**

**HAZARDS AFFECTING LAND**

-----  
**WIND...TROPICAL STORM CONDITIONS ARE EXPECTED TO REACH THE WARNING AREA TONIGHT.**

**STORM SURGE...STORM SURGE WILL RAISE WATER LEVELS BY AS MUCH AS 1 TO 2 FEET ABOVE GROUND LEVEL ALONG THE IMMEDIATE COAST NEAR AND TO THE NORTH OF WHERE THE CENTER MAKES LANDFALL.**

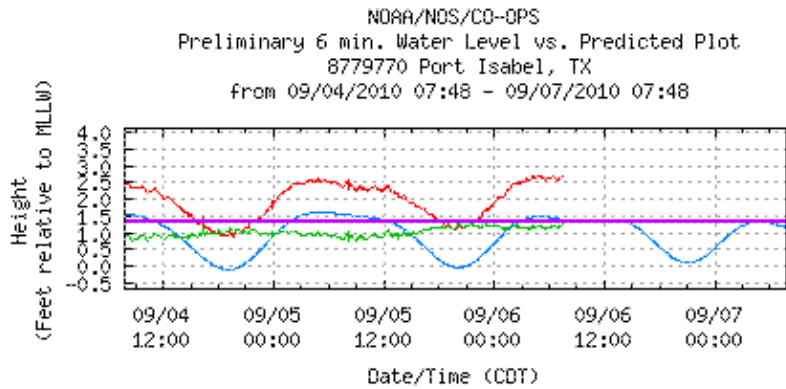
**RAINFALL...HERMINE IS EXPECTED TO PRODUCE RAINFALL ACCUMULATIONS OF 4 TO 8 INCHES OVER NORTHEASTERN MEXICO AND SOUTH TEXAS WITH ISOLATED MAXIMUM AMOUNTS OF 12 INCHES POSSIBLE. THESE RAINFALL AMOUNTS MAY CAUSE LIFE-THREATENING FLASH FLOOD AND MUDSLIDES... ESPECIALLY OVER THE HIGHER TERRAIN OF NORTHEASTERN MEXICO.**

**FORECASTER PASCH/CANGIALOSI**

For the purpose of timely release, data contained within this QuickLook have undergone a "limited" NOS Quality Assurance/Control; however, the data have not yet undergone final verification. All data subject to NOS verification.

Jump to: [Port Isabel - Water Level](#), [Port Isabel - Winds](#), [Port Isabel - Barometric](#), [Port Isabel - Air/Water Temp](#), [South Padre Island C.G Station - Water Level](#), [Corpus Christi - Water Level](#), [Corpus Christi - Winds](#), [Corpus Christi - Barometric](#), [Corpus Christi - Air/Water Temp](#), [Rockport - Water Level](#), [Rockport - Winds](#), [Rockport - Barometric](#), [USCG Freeport - Water Level](#), [USCG Freeport - Winds](#), [USCG Freeport - Barometric](#), [USCG Freeport - Air/Water Temp](#), [Galveston Pleasure Pier - Water Level](#), [Galveston Pleasure Pier - Winds](#), [Galveston Pleasure Pier - Barometric](#), [Galveston Pleasure Pier - Air/Water Temp](#),

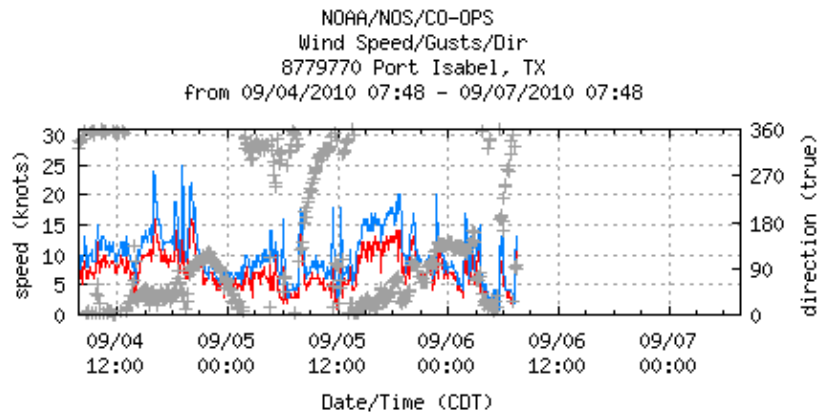
**Port Isabel, TX** - [Return to List](#)



Predicted WL ——— (Obs-Pred) ———  
 Observed WL ——— MHHW ———

Last Observed Sample: 09/06/2010 07:30 (CDT)  
 Relative to **MLLW**: **Observed: 2.70 ft. Predicted: 1.40 ft. Residual: 1.30 ft.**  
 Historical Maximum Water Level: Aug 9 1980, 5.67 ft. above **MHHW**

**Port Isabel, TX** - [Return to List](#)

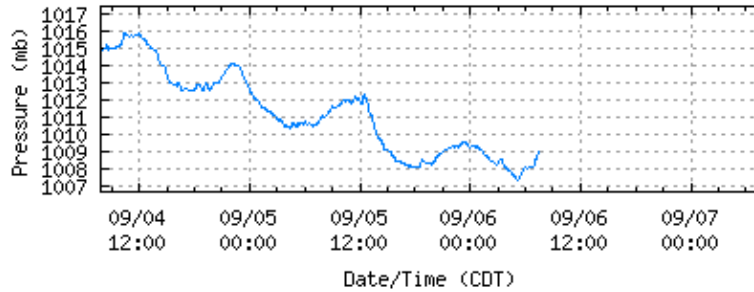


speed ——— gusts ——— direction +

Last Observed Sample: 09/06/2010 07:30 (CDT)  
**Wind Speed: 8 knots Gusts: 11 knots Direction: 088° T**

**Port Isabel, TX** - [Return to List](#)

NOAA/NOS/CO-OPS  
Barometric Pressure Plot  
8779770 Port Isabel, TX  
from 09/04/2010 07:48 - 09/07/2010 07:48



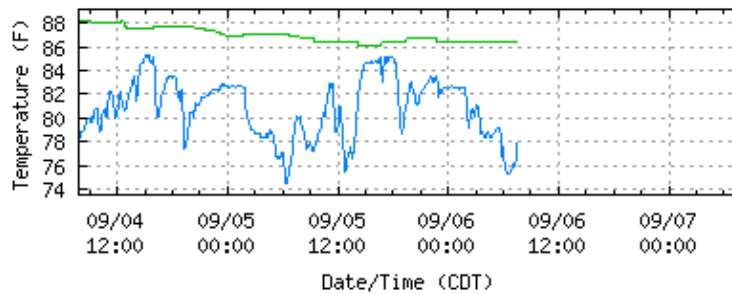
barometric pressure —

Last Observed Sample: 09/06/2010 07:30 (CDT)

Barometric Pressure: 1009.0 mb

**Port Isabel, TX** - [Return to List](#)

NOAA/NOS/CO-OPS  
Air/Water Temperature Plot  
8779770 Port Isabel, TX  
from 09/04/2010 07:48 - 09/07/2010 07:48

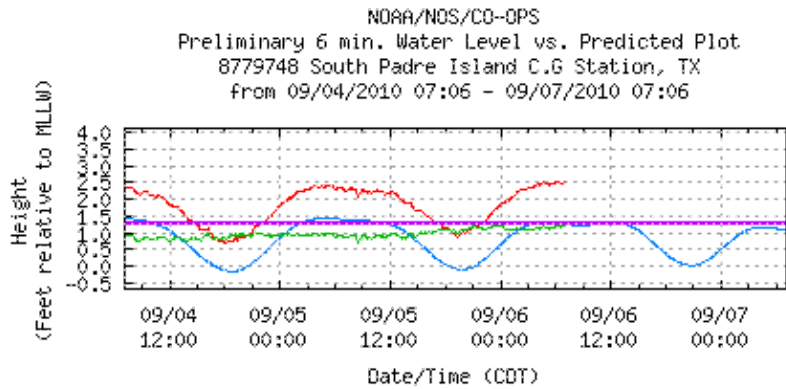


water temp. — air temp —

Last Observed Sample: 09/06/2010 07:30 (CDT)

Water Temperature: 86.4° F Air Temperature: 77.9° F

**South Padre Island C.G Station, TX** - [Return to List](#)



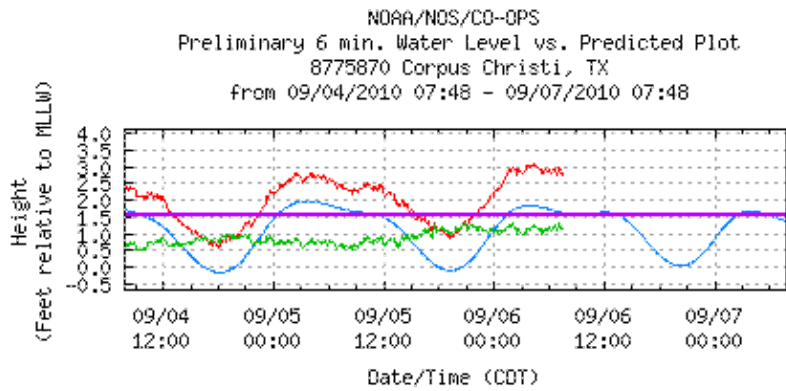
Predicted WL ——— (Obs-Pred) ———  
 Observed WL ——— MHHW ———

Last Observed Sample: 09/06/2010 06:54 (CDT)

Relative to **MLLW**: **Observed: 2.50 ft. Predicted: 1.27 ft. Residual: 1.23 ft.**

Historical Maximum Water Level: , 0 ft. above **MHHW**

**Corpus Christi, TX** - [Return to List](#)



Predicted WL ——— (Obs-Pred) ———  
 Observed WL ——— MHHW ———

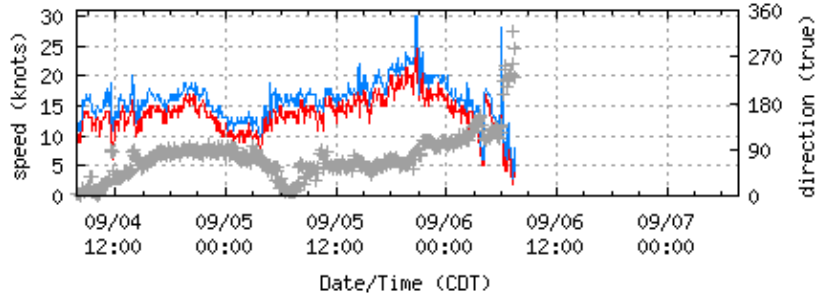
Last Observed Sample: 09/06/2010 07:30 (CDT)

Relative to **MLLW**: **Observed: 2.77 ft. Predicted: 1.62 ft. Residual: 1.15 ft.**

Historical Maximum Water Level: Sep 10 1998, 3.33 ft. above **MHHW**

**Corpus Christi, TX** - [Return to List](#)

NOAA/NDS/CO-OPS  
Wind Speed/Gusts/Dir  
8775870 Corpus Christi, TX  
from 09/04/2010 07:48 - 09/07/2010 07:48



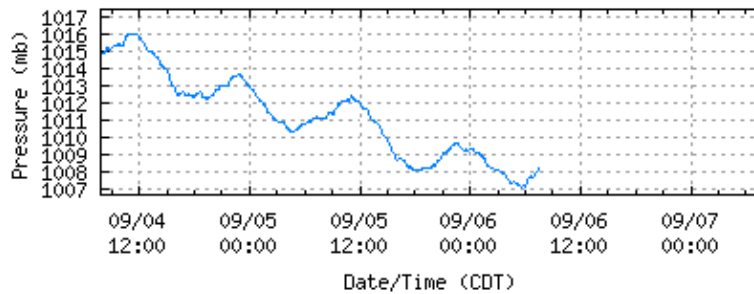
speed — gusts — direction +

Last Observed Sample: 09/06/2010 07:30 (CDT)

Wind Speed: 6 knots Gusts: 8 knots Direction: 231° T

**Corpus Christi, TX** - [Return to List](#)

NOAA/NDS/CO-OPS  
Barometric Pressure Plot  
8775870 Corpus Christi, TX  
from 09/04/2010 07:48 - 09/07/2010 07:48



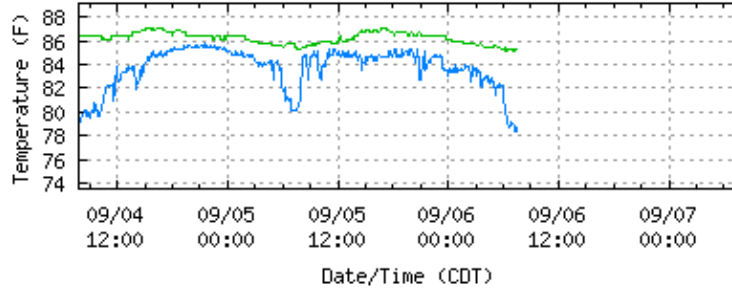
barometric pressure —

Last Observed Sample: 09/06/2010 07:30 (CDT)

Barometric Pressure: 1008.3 mb

**Corpus Christi, TX** - [Return to List](#)

NOAA/NOS/CO-OPS  
 Air/Water Temperature Plot  
 8775870 Corpus Christi, TX  
 from 09/04/2010 07:48 - 09/07/2010 07:48



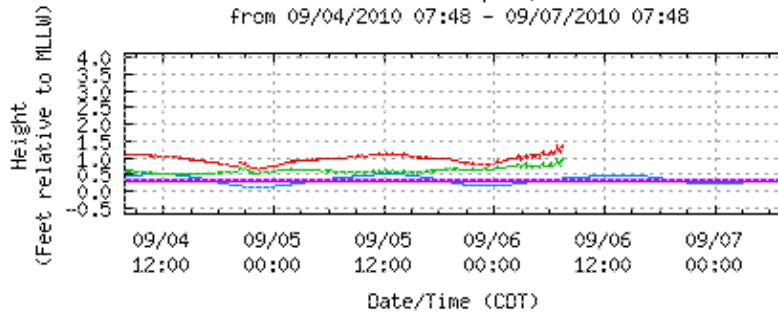
water temp. — green — air temp — blue —

Last Observed Sample: 09/06/2010 07:30 (CDT)

Water Temperature: 85.3° F Air Temperature: 78.4° F

**Rockport, TX** - [Return to List](#)

NOAA/NOS/CO-OPS  
 Preliminary 6 min. Water Level vs. Predicted Plot  
 8774770 Rockport, TX  
 from 09/04/2010 07:48 - 09/07/2010 07:48



Predicted WL — blue — (Obs-Pred) — green —  
 Observed WL — red — MHHW — purple —

Last Observed Sample: 09/06/2010 07:30 (CDT)

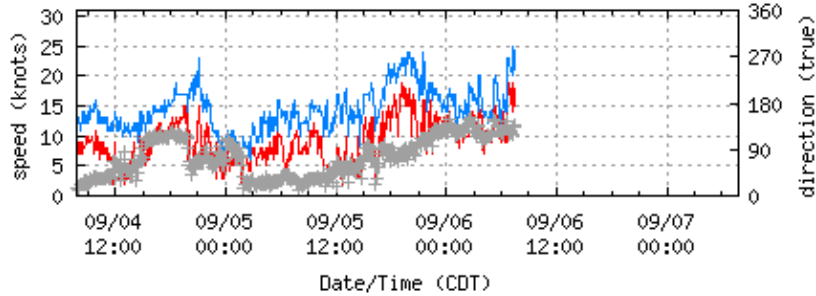
Relative to **MLLW**: Observed: 1.32 ft. Predicted: 0.39 ft. Residual: 0.93 ft.

Historical Maximum Water Level: Aug 10 1980, 3.74 ft. above **MHHW**



**Rockport, TX** - [Return to List](#)

NOAA/NDS/CO-OPS  
Wind Speed/Gusts/Dir  
8774770 Rockport, TX  
from 09/04/2010 07:48 - 09/07/2010 07:48



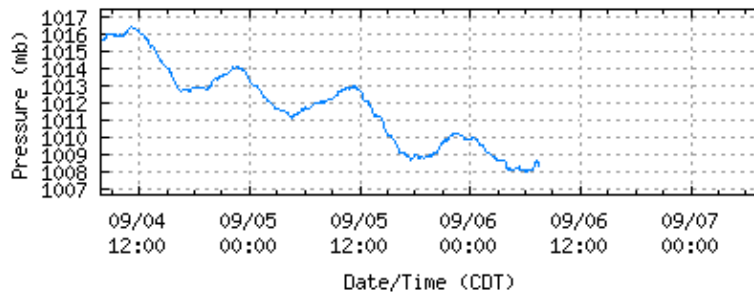
speed — gusts — direction +

Last Observed Sample: 09/06/2010 07:30 (CDT)

Wind Speed: 15 knots Gusts: 21 knots Direction: 137° T

**Rockport, TX** - [Return to List](#)

NOAA/NDS/CO-OPS  
Barometric Pressure Plot  
8774770 Rockport, TX  
from 09/04/2010 07:48 - 09/07/2010 07:48

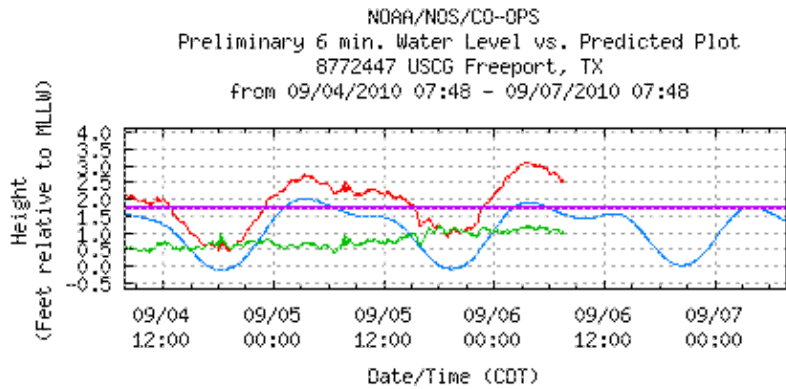


barometric pressure —

Last Observed Sample: 09/06/2010 07:30 (CDT)

Barometric Pressure: 1008.4 mb

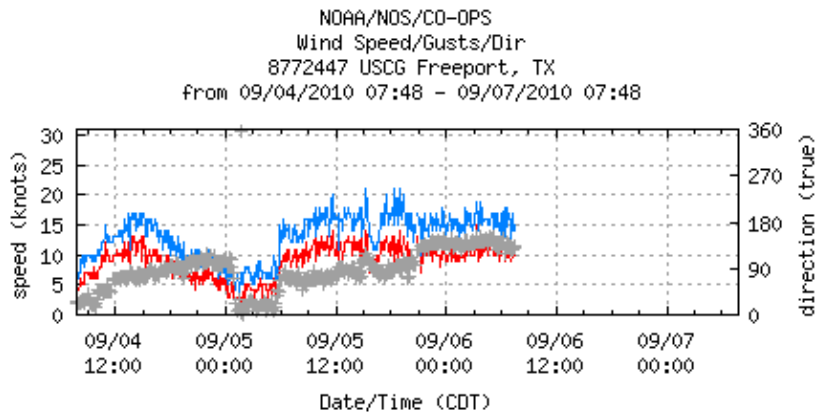
**USCG Freeport, TX** - [Return to List](#)



Predicted WL ——— (Obs-Pred) ———  
 Observed WL ——— MHHW ———

Last Observed Sample: 09/06/2010 07:30 (CDT)  
 Relative to **MLLW**: **Observed: 2.58 ft. Predicted: 1.56 ft. Residual: 1.02 ft.**  
 Historical Maximum Water Level: Sep 12 2008, 5.6 ft. above **MHHW**

**USCG Freeport, TX** - [Return to List](#)

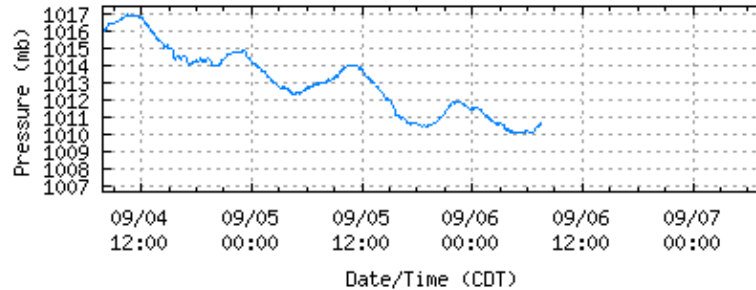


speed ——— gusts ——— direction +

Last Observed Sample: 09/06/2010 07:30 (CDT)  
**Wind Speed: 10 knots Gusts: 14 knots Direction: 130° T**

**USCG Freeport, TX** - [Return to List](#)

NOAA/NDS/CO-OPS  
Barometric Pressure Plot  
8772447 USCG Freeport, TX  
from 09/04/2010 07:48 - 09/07/2010 07:48



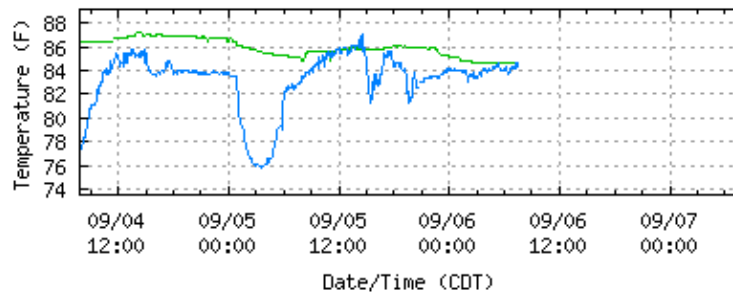
barometric pressure —

**Last Observed Sample: 09/06/2010 07:30 (CDT)**

**Barometric Pressure: 1010.7 mb**

**USCG Freeport, TX** - [Return to List](#)

NOAA/NDS/CO-OPS  
Air/Water Temperature Plot  
8772447 USCG Freeport, TX  
from 09/04/2010 07:48 - 09/07/2010 07:48

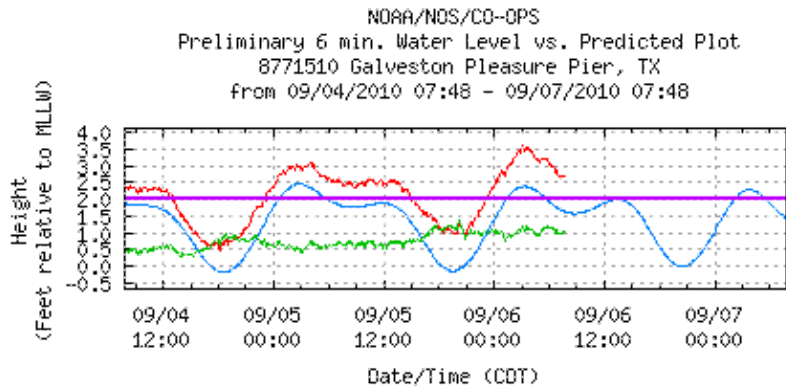


water temp. — air temp. —

**Last Observed Sample: 09/06/2010 07:30 (CDT)**

**Water Temperature: 84.4° F Air Temperature: 84.7° F**

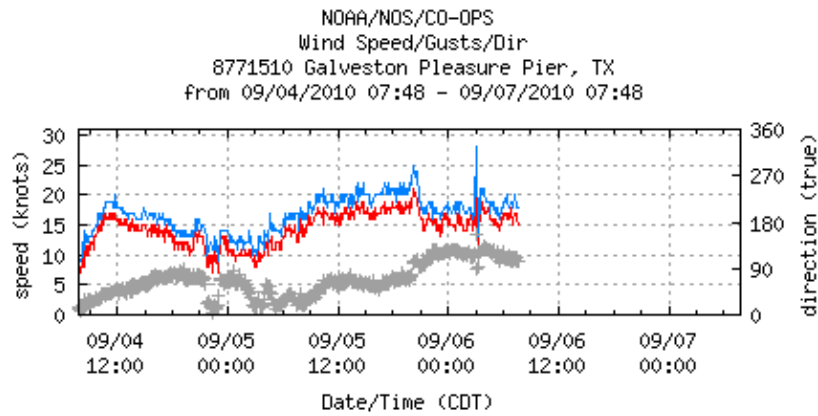
**Galveston Pleasure Pier, TX** - [Return to List](#)



Predicted WL ——— (Obs-Pred) ———  
 Observed WL ——— MHHW ———

Last Observed Sample: 09/06/2010 07:36 (CDT)  
 Relative to **MLLW**: **Observed: 2.69 ft. Predicted: 1.64 ft. Residual: 1.05 ft.**  
 Historical Maximum Water Level: Sep 11 1961, 7.16 ft. above **MHHW**

**Galveston Pleasure Pier, TX** - [Return to List](#)

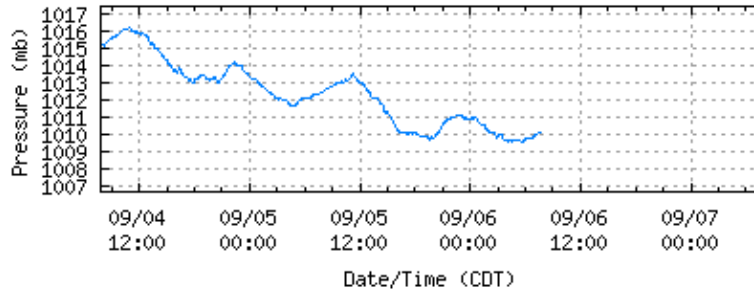


speed ——— gusts ——— direction +

Last Observed Sample: 09/06/2010 07:36 (CDT)  
**Wind Speed: 15 knots Gusts: 18 knots Direction: 103° T**

**Galveston Pleasure Pier, TX** - [Return to List](#)

NOAA/NOS/CO-OPS  
Barometric Pressure Plot  
8771510 Galveston Pleasure Pier, TX  
from 09/04/2010 07:48 - 09/07/2010 07:48



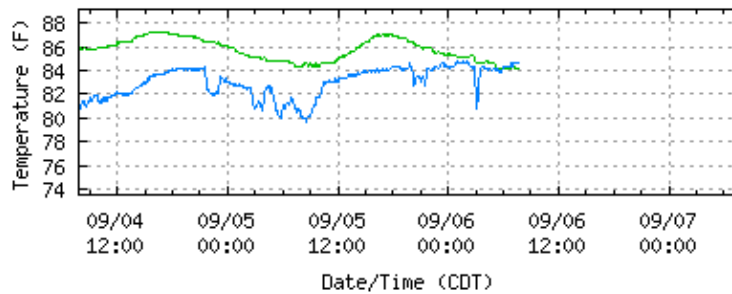
barometric pressure —

**Last Observed Sample: 09/06/2010 07:36 (CDT)**

**Barometric Pressure: 1010.2 mb**

**Galveston Pleasure Pier, TX** - [Return to List](#)

NOAA/NOS/CO-OPS  
Air/Water Temperature Plot  
8771510 Galveston Pleasure Pier, TX  
from 09/04/2010 07:48 - 09/07/2010 07:48



water temp. — air temp —

**Last Observed Sample: 09/06/2010 07:36 (CDT)**

**Water Temperature: 84.2° F Air Temperature: 84.7° F**

# Tropical Storm HERMINE QuickLook, POSTED 08:00 CDT 09/06/2010

Center for Operational Oceanographic Products & Services (CO-OPS) | National Ocean Service (NOS)  
National Oceanic and Atmospheric Administration | U.S. Department of Commerce