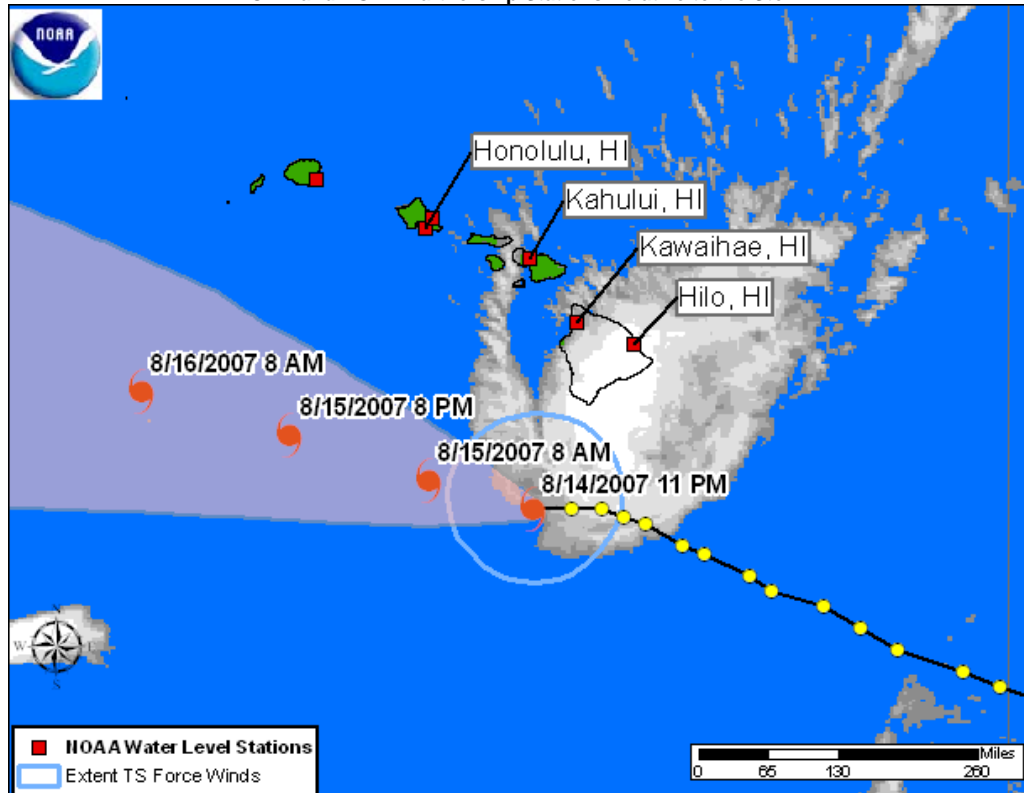




Tropical Storm FLOSSIE QUICKLOOK  
Posted: 00:00 HST 08/15/2007



NOAA and NOAA Partnership Stations Relative to the Storm



Storm Analysis

Observations as of 8/15/2007 0000 HST:

NOS water level at Hilo is around 0.27 ft (0.08 m) above predicted.  
Next high tide at 08/15/2007 Tue 04:24 AM HST.

NOS water level at Kawaihae is around 0.38 ft (0.12 m) above predicted.  
Next high tide at 08/15/2007 Tue 05:25 AM HST.

NOS water level at Honolulu is around 0.37 ft (0.11 m) above predicted.  
Next high tide at 08/15/2007 Tue 05:37 AM HST.

NOS water level at Kahului is around 0.25 ft (0.08 m) above predicted.  
Next high tide at 08/15/2007 Tue 03:31 AM HST.

SELECT [CENTRAL PACIFIC HURRICANE CENTER](#) ADVISORY INFORMATION:

THE HURRICANE WATCH FOR THE BIG ISLAND OF HAWAII HAS BEEN CANCELLED.

A TROPICAL STORM WARNING REMAINS IN EFFECT FOR THE BIG ISLAND OF HAWAII.

AT 1100 PM HST THE CENTER OF TROPICAL STORM FLOSSIE WAS LOCATED ABOUT 175 MILES SOUTH-SOUTHWEST OF HILO AND ABOUT 280 MILES SOUTH-SOUTHEAST OF

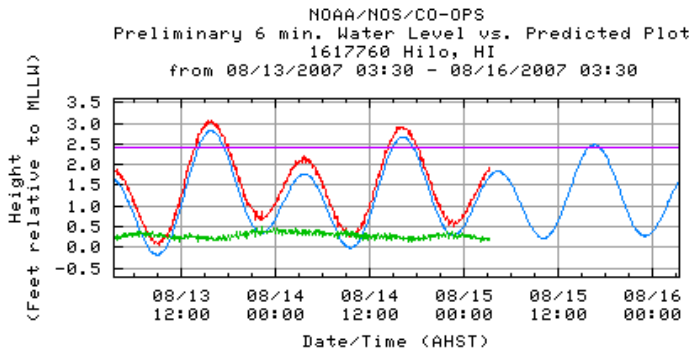
HONOLULU.  
 MOVEMENT TOWARD THE WEST-NORTHWEST  
 NEAR 10 MPH. MAXIMUM SUSTAINED WINDS  
 70 MPH. MINIMUM CENTRAL PRESSURE 995 MB.

Water level and meteorological plots are updated automatically. For more information, please see [www.tidesandcurrents.noaa.gov](http://www.tidesandcurrents.noaa.gov).

For the purpose of timely release, data contained within this QUICKLOOK have undergone a "limited" NOS Quality Assurance/Control; however, the data have not yet undergone final verification. All data subject to NOS verification.

Jump to: [Hilo - Water Level](#), [Kawaihae - Winds](#), [Honolulu - Water Level](#), [Kahului - Water Level](#), [Kawaihae - Water Level](#), [Kawaihae - Barometric](#), [Honolulu - Barometric](#)

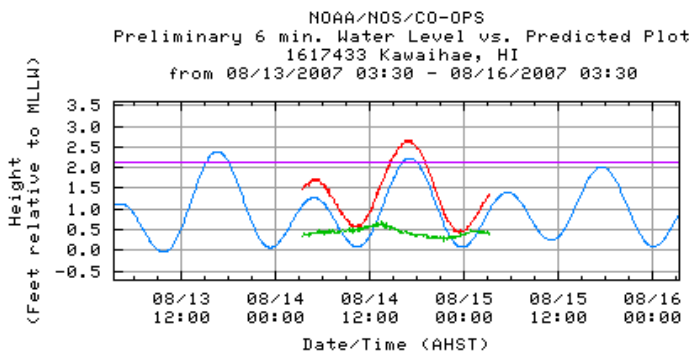
[Hilo, HI - Station Map](#) [Return to List](#)



Predicted WL ——— (Obs-Pred) ———  
 Observed WL ——— MHHW ———

Last Observed Sample: 08/15/2007 03:18 (AHST)  
 Relative to MLLW: Observed: 1.92 ft. Predicted: 1.70 ft. Residual: 0.22 ft.  
 Historical Maximum Water Level: 01/20/1981, 1.37 ft. above MHHW

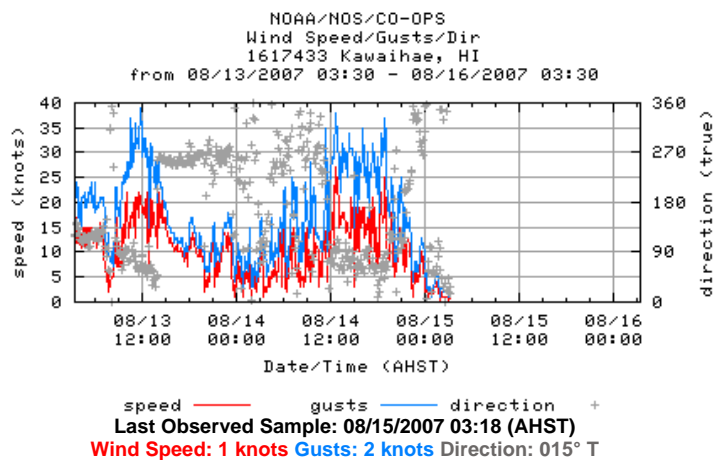
[Kawaihae, HI - Station Map](#) [Return to List](#)



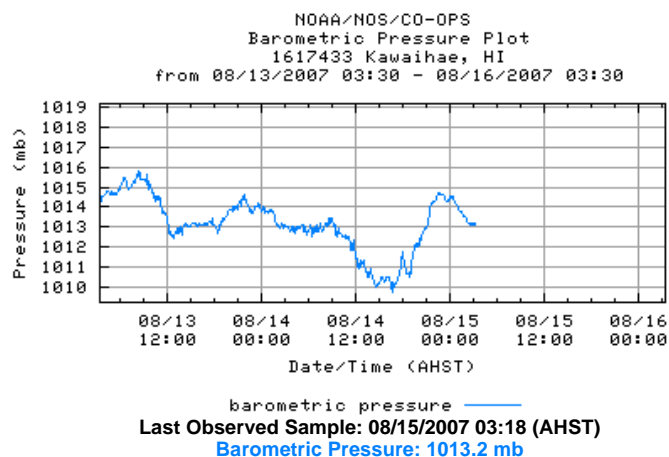
Predicted WL ——— (Obs-Pred) ———  
 Observed WL ——— MHHW ———

Last Observed Sample: 08/15/2007 03:18 (AHST)  
 Relative to MLLW: Observed: 1.37 ft. Predicted: 0.96 ft. Residual: 0.41 ft.  
 Historical Maximum Water Level: 07/21/2001, 1.08 ft. above MHHW

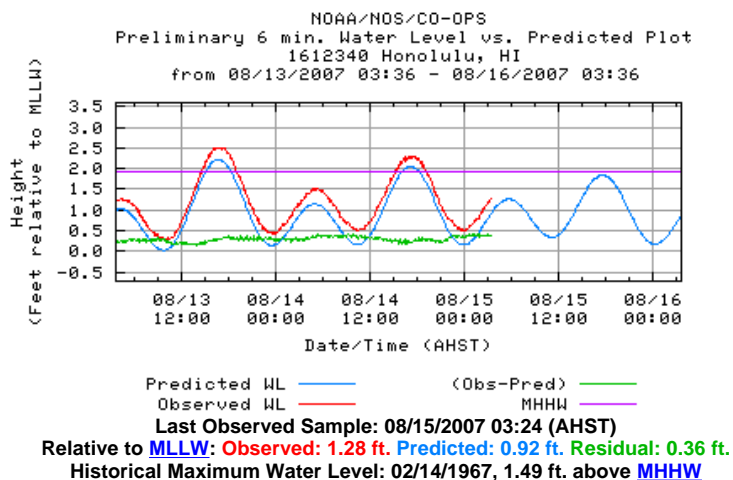
[Kawaihae, HI - Station Map](#) [Return to List](#)



[Kawaihae, HI - Station Map](#) [Return to List](#)

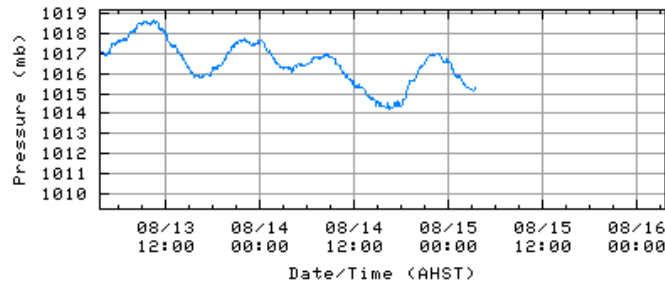


[Honolulu, HI - Station Map](#) [Return to List](#)



[Honolulu, HI - Station Map](#) [Return to List](#)

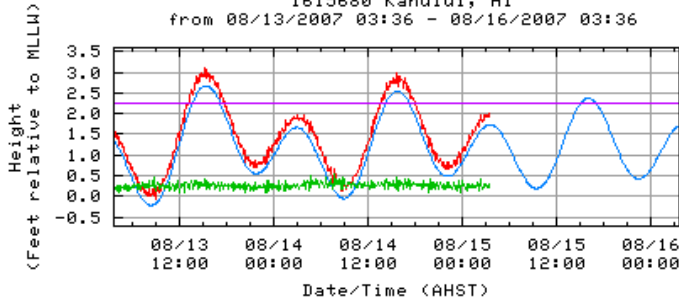
NOAA/NOS/CO-OPS  
 Barometric Pressure Plot  
 1612340 Honolulu, HI  
 from 08/13/2007 03:36 - 08/16/2007 03:36



barometric pressure —  
**Last Observed Sample: 08/15/2007 03:24 (AHST)**  
**Barometric Pressure: 1015.2 mb**

[Kahului, HI - Station Map](#) [Return to List](#)

NOAA/NOS/CO-OPS  
 Preliminary 6 min. Water Level vs. Predicted Plot  
 1615680 Kahului, HI  
 from 08/13/2007 03:36 - 08/16/2007 03:36



Predicted WL — (Obs-Pred) —  
 Observed WL — MHHW —  
**Last Observed Sample: 08/15/2007 03:24 (AHST)**  
**Relative to MLLW: Observed: 1.92 ft. Predicted: 1.72 ft. Residual: 0.20 ft.**  
**Historical Maximum Water Level: 12/20/1968, 1.23 ft. above MHHW**

Center for Operational Oceanographic Products & Services (CO-OPS) | National Ocean Service (NOS)  
 National Oceanic and Atmospheric Administration | U.S. Department of Commerce