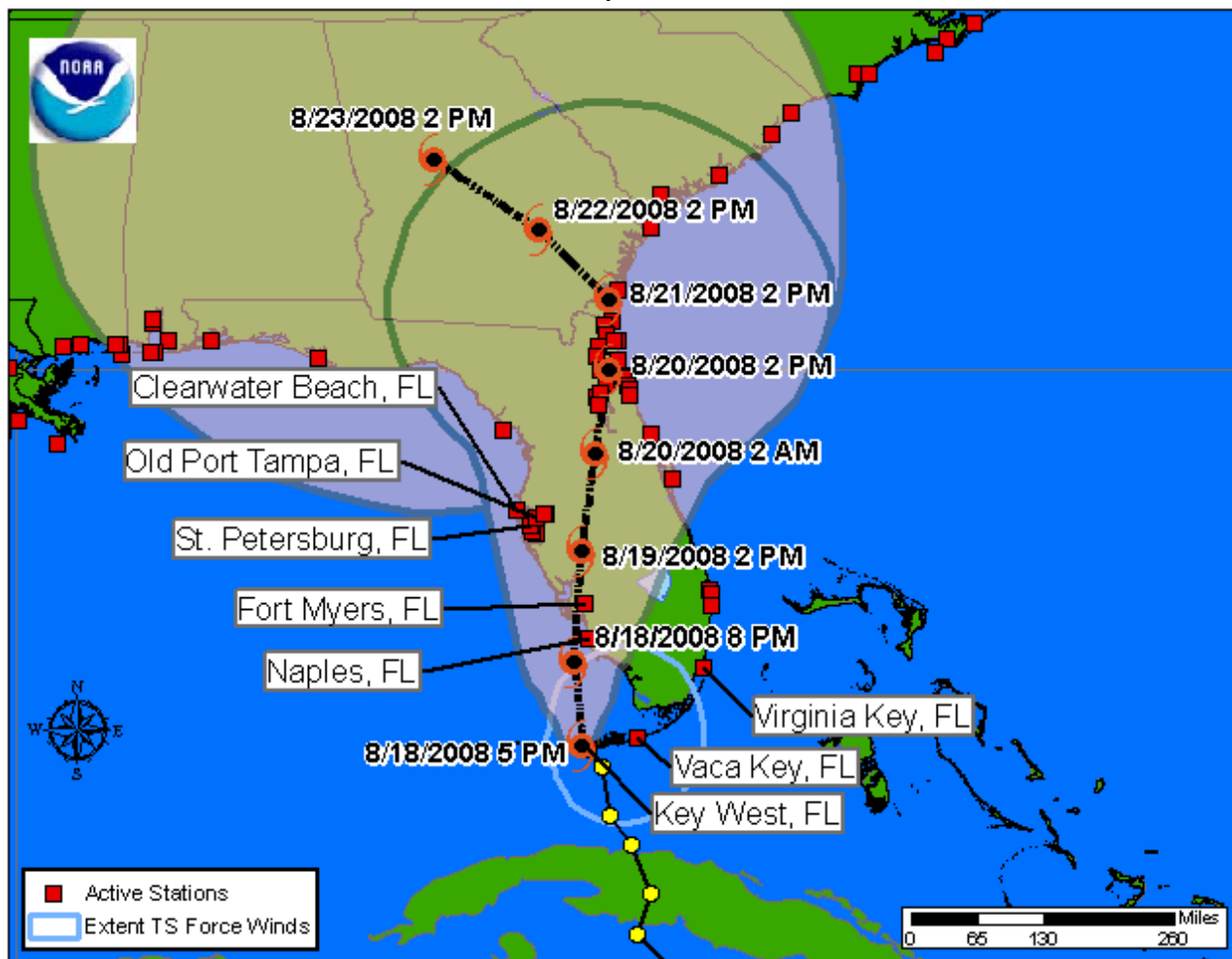




Tropical Storm FAY QuickLook
Posted: 19:00 EDT 08/18/2008

NOAA and NOAA Partnership Stations Relative to the Storm



Storm Analysis

As of 08/18/2008 19:00 EDT, water levels in Key West are elevated and up to 0.9 ft above predicted. Water levels in Naples are up to 0.4 ft below predicted. Wind gusts are up to 35 knots in the Florida Keys. Barometric pressure continues to fall across southwestern Florida.

Water Level and Meteorological plots available below are updated automatically. Water level predictions relative to [Mean Lower Low Water](#) are:

Key West, FL: Next predicted high tide is 1.7 ft (0.52 m) at 08/19/2008 00:04 EDT.

Vaca Key, FL: Next predicted high tide is 1.00 ft (0.30 m) at 08/19/2008 04:40 EDT.

Virginia Key, FL: Next predicted high tide is 2.4 ft (0.73 m) at 08/18/2008 23:09 EDT.

Naples, FL: Next predicted high tide is 2.9 ft (0.88 m) at 08/19/2008 02:24 EDT.

Fort Myers, FL: Next predicted high tide is 1.10 ft (0.34 m) at 08/19/2008 06:07 EDT.

Old Port Tampa, FL: Next predicted high tide is 2.2 ft (0.67 m) at 08/19/2008 04:36 EDT.

Clearwater Beach, FL: Next predicted high tide is 2.50 ft (0.76 m) at 08/19/2008 02:12 EDT.

St.Petersburg, FL: Next predicted high tide is 2.00 ft (0.61 m) at 08/19/2008 04:11 EDT.

For additional data, please see the [Center for Operational Oceanographic Products & Services website](#). For more information or archived products and reports, please see the [Storm QuickLook Homepage](#).

Analyst: ND

SELECT [NATIONAL HURRICANE CENTER](#) ADVISORY INFORMATION:

**TROPICAL STORM FAY ADVISORY NUMBER 13
500 PM EDT MON AUG 18 2008**

A HURRICANE WARNING IS IN EFFECT FOR THE SOUTHWESTERN COAST OF FLORIDA FROM FLAMINGO TO ANNA MARIA ISLAND. A HURRICANE WARNING MEANS THAT HURRICANE CONDITIONS ARE EXPECTED WITHIN THE WARNING AREA WITHIN THE NEXT 24 HOURS. PREPARATIONS TO PROTECT LIFE AND PROPERTY SHOULD BE RUSHED TO COMPLETION.

AT 5 PM EDT THE TROPICAL STORM WARNING ON THE FLORIDA EAST COAST IS EXTENDED NORTHWARD TO FLAGLER BEACH. A TROPICAL STORM WARNING IS NOW IN EFFECT ALONG THE FLORIDA EAST COAST FROM FLAGLER BEACH SOUTHWARD INCLUDING LAKE OKEECHOBEE.

AT 5 PM EDT 2100 UTCA TROPICAL STORM WARNING IS IN EFFECT FOR THE FLORIDA WEST COAST NORTH OF ANNA MARIA ISLAND TO TARPON SPRINGS. A HURRICANE WATCH ALSO REMAINS IN EFFECT FOR THIS AREA.

AT 5 PM EDT 2100 UTC THE HURRICANE WATCH IS DISCONTINUED FOR THE FLORIDA KEYS FROM OCEAN REEF TO KEY WEST INCLUDING THE DRY TORTUGAS AND FOR THE FLORIDA MAINLAND EAST OF FLAMINGO TO CARD SOUND BRIDGE. A TROPICAL STORM WARNING REMAINS IN EFFECT FOR THIS AREA.

A TROPICAL STORM WATCH REMAINS IN EFFECT FOR THE FLORIDA EAST COAST NORTH OF FLAGLER BEACH TO FERNANDINA BEACH.

INTERESTS ELSEWHERE IN FLORIDA AND THE EASTERN GULF OF MEXICO SHOULD MONITOR THE PROGRESS OF FAY.

FOR STORM INFORMATION SPECIFIC TO YOUR AREA INCLUDING POSSIBLE INLAND WATCHES AND WARNINGS PLEASE MONITOR PRODUCTS ISSUED BY YOUR LOCAL WEATHER OFFICE.

AT 500 PM EDT 2100 Z THE CENTER OF TROPICAL STORM FAY WAS LOCATED NEAR LATITUDE 24.6 NORTH LONGITUDE 81.9 WEST OR NEAR KEY WEST FLORIDA AND ABOUT 145 MILES 235 KM SOUTH OF FT. MYERS FLORIDA.

FAY IS MOVING TOWARD THE NORTH-NORTHWEST NEAR 12 MPH 19 KM/HR. A TURN TOWARD THE NORTH WITH A SLOWER FORWARD SPEED IS EXPECTED TONIGHT FOLLOWED BY A GENERALLY NORTHWARD MOTION TUESDAY AND TUESDAY NIGHT. THIS MOTION SHOULD BRING THE CENTER OF FAY AWAY FROM THE FLORIDA KEYS TONIGHT AND NEAR OR OVER THE SOUTHWESTERN COAST OF FLORIDA ON TUESDAY.

MAXIMUM SUSTAINED WINDS ARE NEAR 60 MPH 95 KM/HR WITH HIGHER GUSTS. STRENGTHENING IS EXPECTED TONIGHT AND TUESDAY AND FAY IS FORECAST TO BE AT OR NEAR HURRICANE STRENGTH AS IT APPROACHES THE SOUTHWESTERN COAST OF FLORIDA.

TROPICAL STORM FORCE WINDS EXTEND OUTWARD UP TO 125 MILES 205 KM

FROM THE CENTER. THE NOAA AUTOMATED STATION AT SOMBRERO KEY FLORIDA RECENTLY REPORTED 2-MINUTE AVERAGE WINDS OF 60 MPH 96 KM/HR AND AN ELEVATION OF 159 FEET. THE NOAA AUTOMATED STATION AT SAND KEY FLORIDA RECENTLY REPORTED A WIND GUST OF 71 MPH 115 KM/HR AT AN ELEVATION OF 149 FT.

THE LATEST MINIMUM CENTRAL PRESSURE REPORTED BY AN AIR FORCE RESERVE HURRICANE HUNTER AIRCRAFT AND THE NATIONAL WEATHER SERVICE OFFICE IN KEY WEST IS 998 MB 29.47 INCHES.

STORM TIDES OF 3 TO 5 FEET ABOVE NORMAL ARE POSSIBLE ALONG THE SOUTHWESTERN COAST OF FLORIDA NEAR THE CENTER OF FAY. TIDES OF 2 TO 4 FT ABOVE NORMAL ARE POSSIBLE IN THE FLORIDA KEYS.

FAY IS EXPECTED TO PRODUCE ADDITIONAL RAINFALL ACCUMULATIONS OF 3 TO 5 INCHES OVER THE CENTRAL PORTION OF CUBA WITH STORM TOTAL AMOUNTS OF 20 INCHES BEING POSSIBLE. THESE RAINS COULD CAUSE LIFE THREATENING FLASH-FLOODS AND MUDSLIDES. RAINFALL ACCUMULATIONS OF 4 TO 8 INCHES WITH MAXIMUM STORM TOTAL AMOUNTS OF 10 INCHES ARE POSSIBLE FOR THE FLORIDA KEYS AND THE CENTRAL AND SOUTHERN FLORIDA PENINSULA. RAINFALL ACCUMULATIONS OF 3 TO 5 INCHES ARE POSSIBLE IN THE NORTHWESTERN BAHAMAS.

ISOLATED TORNADOES ARE POSSIBLE TONIGHT OVER THE FLORIDA KEYS AND THE SOUTHERN AND CENTRAL FLORIDA PENINSULA.

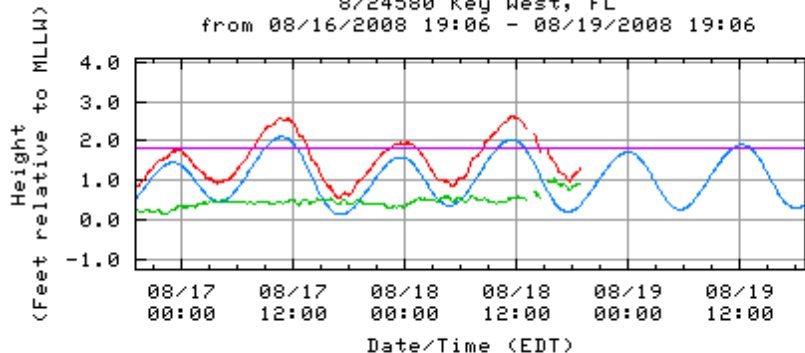
FORECASTER BEVEN

For the purpose of timely release, data contained within this QuickLook have undergone a "limited" NOS Quality Assurance/Control; however, the data have not yet undergone final verification. All data subject to NOS verification.

Jump to: [Key West - Water Level](#), [Key West - Air/Water Temp](#), [Key West - Winds](#), [Key West - Barometric](#), [Vaca Key - Water Level](#), [Vaca Key - Air/Water Temp](#), [Vaca Key - Winds](#), [Vaca Key - Barometric](#), [Virginia Key - Water Level](#), [Naples - Water Level](#), [Naples - Air/Water Temp](#), [Naples - Winds](#), [Naples - Barometric](#), [Fort Myers - Water Level](#), [Fort Myers - Air/Water Temp](#), [Fort Myers - Winds](#), [Fort Myers - Barometric](#), [St. Petersburg - Water Level](#), [St. Petersburg - Winds](#), [St. Petersburg - Barometric](#), [Old Port Tampa - Water Level](#), [Old Port Tampa - Winds](#), [Clearwater Beach - Water Level](#), [Clearwater Beach - Winds](#),

[Key West, FL - Station Map](#) [Return to List](#)

NOAA/NOS/CO-OPS
Preliminary 6 min. Water Level vs. Predicted Plot
8724580 Key West, FL
from 08/16/2008 19:06 - 08/19/2008 19:06



Predicted WL — (Obs-Pred) —
Observed WL — MHHW —

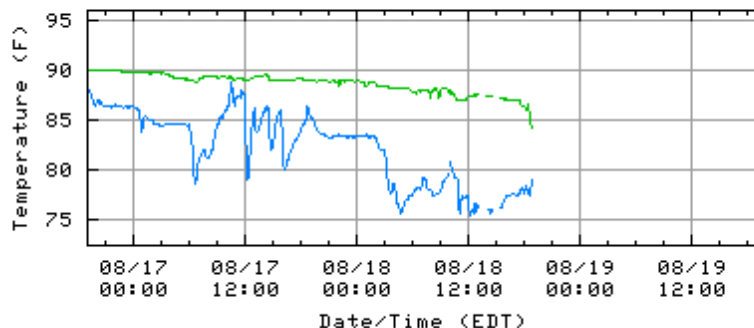
Last Observed Sample: 08/18/2008 18:48 (EDT)

Relative to [MLLW](#): Observed: 1.31 ft. Predicted: 0.37 ft. Residual: 0.94 ft.

Historical Maximum Water Level: 09/08/1965, 1.93 ft. above [MHHW](#)

[Key West, FL - Station Map](#) [Return to List](#)

NOAA/NOS/CO-OPS
Air/Water Temperature Plot
8724580 Key West, FL
from 08/16/2008 19:06 - 08/19/2008 19:06



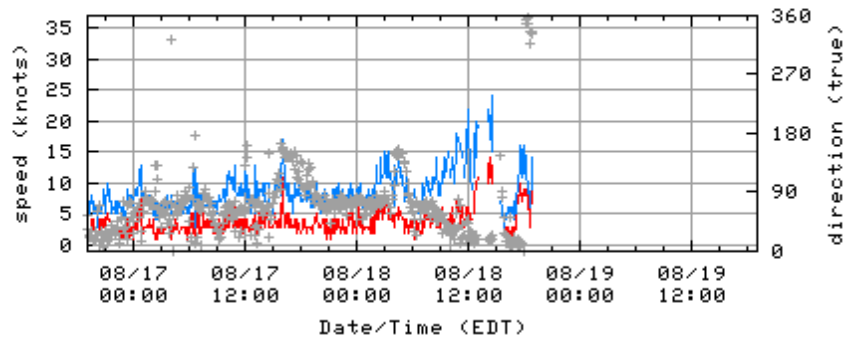
water temp. — air temp —

Last Observed Sample: 08/18/2008 18:48 (EDT)

Water Temperature: 84.4° F Air Temperature: 79.0° F

[Key West, FL - Station Map](#) [Return to List](#)

NOAA/NOS/CO-OPS
Wind Speed/Gusts/Dir
8724580 Key West, FL
from 08/16/2008 19:06 - 08/19/2008 19:06



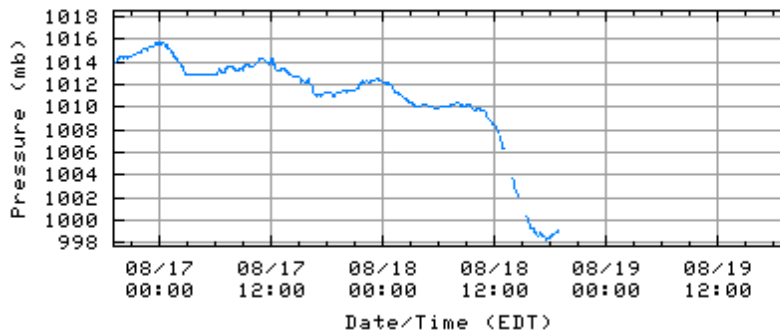
speed — gusts — direction +

Last Observed Sample: 08/18/2008 18:48 (EDT)

Wind Speed: 9 knots Gusts: 12 knots Direction: 337° T

[Key West, FL - Station Map](#) [Return to List](#)

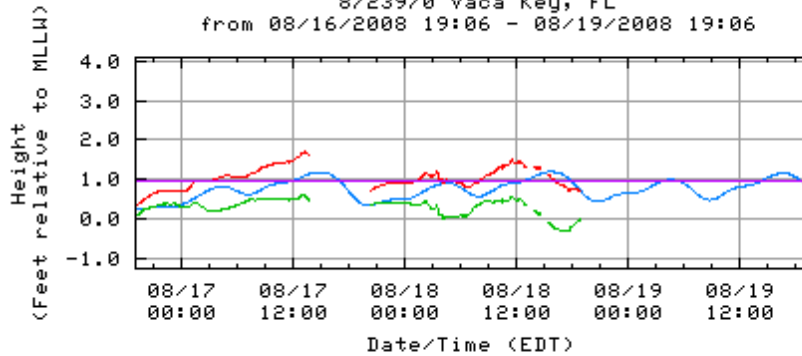
NOAA/NOS/CO-OPS
Barometric Pressure Plot
8724580 Key West, FL
from 08/16/2008 19:06 - 08/19/2008 19:06



Last Observed Sample: 08/18/2008 18:48 (EDT)
Barometric Pressure: 999.1 mb

[Vaca Key, FL - Station Map](#) [Return to List](#)

NOAA/NOS/CO-OPS
Preliminary 6 min. Water Level vs. Predicted Plot
8723970 Vaca Key, FL
from 08/16/2008 19:06 - 08/19/2008 19:06



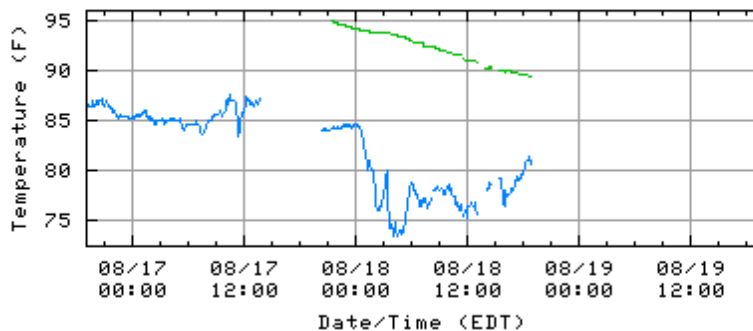
Last Observed Sample: 08/18/2008 18:48 (EDT)

Relative to [MLLW](#): Observed: 0.73 ft. Predicted: 0.76 ft. Residual: -0.03 ft.

Historical Maximum Water Level: 10/07/1974, 1.42 ft. above [MHHW](#)

[Vaca Key, FL - Station Map](#) [Return to List](#)

NOAA/NOS/CO-OPS
Air/Water Temperature Plot
8723970 Vaca Key, FL
from 08/16/2008 19:06 - 08/19/2008 19:06

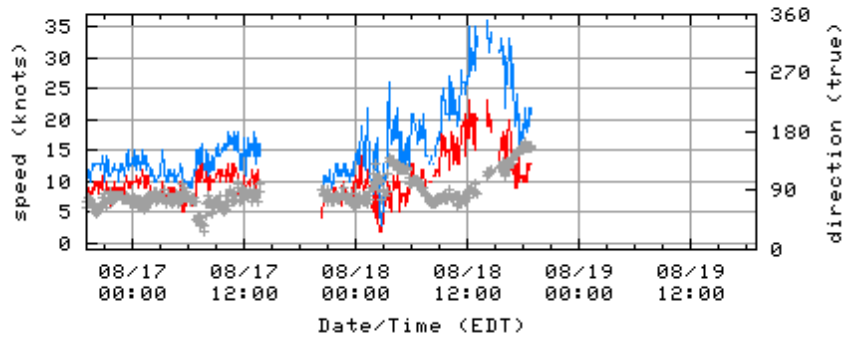


Last Observed Sample: 08/18/2008 18:48 (EDT)

Water Temperature: 89.4° F Air Temperature: 80.6° F

[Vaca Key, FL - Station Map](#) [Return to List](#)

NOAA/NOS/CO-OPS
Wind Speed/Gusts/Dir
8723970 Vaca Key, FL
from 08/16/2008 19:06 - 08/19/2008 19:06



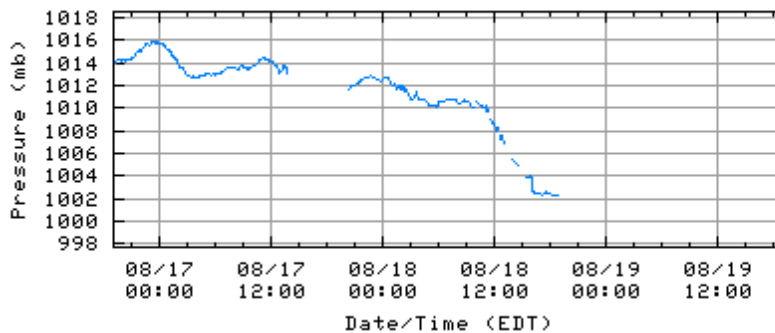
speed — gusts — direction +

Last Observed Sample: 08/18/2008 18:48 (EDT)

Wind Speed: 13 knots Gusts: 21 knots Direction: 157° T

[Vaca Key, FL - Station Map](#) [Return to List](#)

NOAA/NOS/CO-OPS
Barometric Pressure Plot
8723970 Vaca Key, FL
from 08/16/2008 19:06 - 08/19/2008 19:06



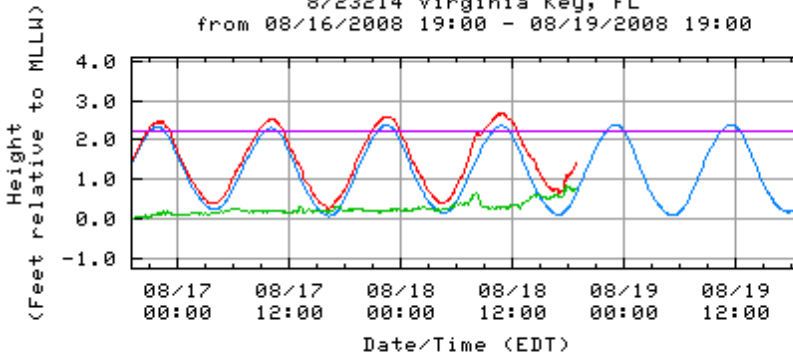
barometric pressure —

Last Observed Sample: 08/18/2008 18:48 (EDT)

Barometric Pressure: 1002.3 mb

[Virginia Key, FL - Station Map](#) [Return to List](#)

NOAA/NOS/CO-OPS
Preliminary 6 min. Water Level vs. Predicted Plot
8723214 Virginia Key, FL
from 08/16/2008 19:00 - 08/19/2008 19:00



Predicted WL — (Obs-Pred) —

Observed WL — MHHW —

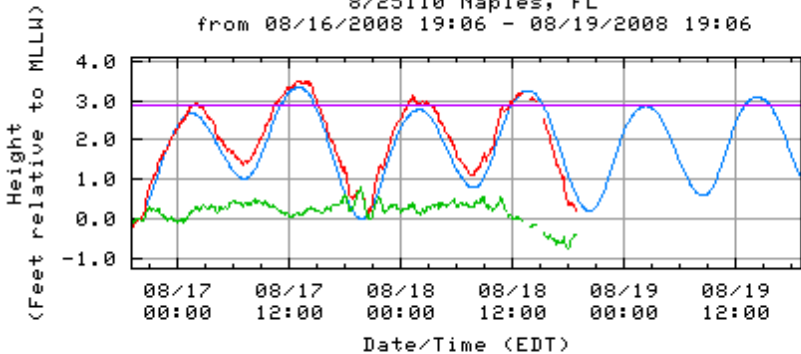
Last Observed Sample: 08/18/2008 18:48 (EDT)

Relative to MLLW: Observed: 1.41 ft. Predicted: 0.65 ft. Residual: 0.76 ft.

Historical Maximum Water Level: 11/15/1994, 1.9 ft. above [MHHW](#)

[Naples, FL - Station Map](#) [Return to List](#)

NOAA/NOS/CO-OPS
Preliminary 6 min. Water Level vs. Predicted Plot
8725110 Naples, FL
from 08/16/2008 19:06 - 08/19/2008 19:06



Predicted WL — (Obs-Pred) —
Observed WL — MHHW —

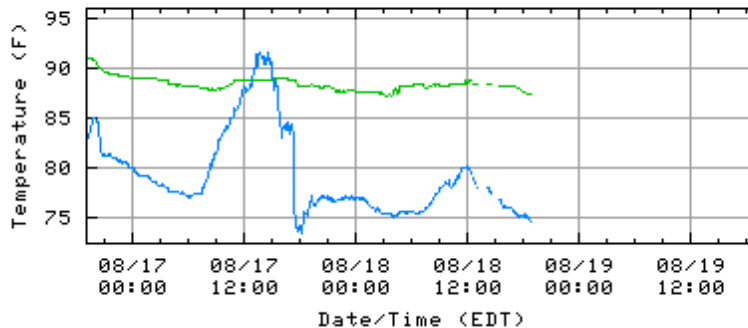
Last Observed Sample: 08/18/2008 18:48 (EDT)

Relative to [MLLW](#): Observed: 0.27 ft. Predicted: 0.67 ft. Residual: -0.40 ft.

Historical Maximum Water Level: 12/21/1972, 3.11 ft. above [MHHW](#)

[Naples, FL - Station Map](#) [Return to List](#)

NOAA/NOS/CO-OPS
Air/Water Temperature Plot
8725110 Naples, FL
from 08/16/2008 19:06 - 08/19/2008 19:06



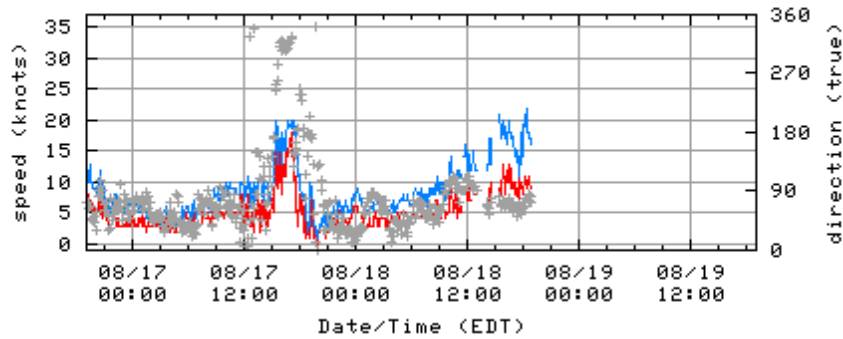
water temp. — air temp. —

Last Observed Sample: 08/18/2008 18:48 (EDT)

Water Temperature: 87.4° F Air Temperature: 74.7° F

[Naples, FL - Station Map](#) [Return to List](#)

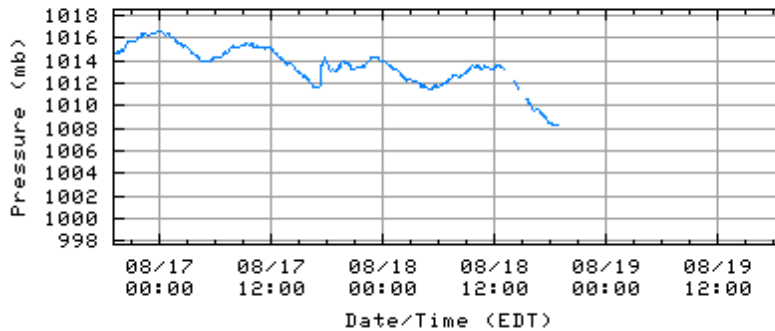
NOAA/NOS/CO-OPS
Wind Speed/Gusts/Dir
8725110 Naples, FL
from 08/16/2008 19:06 - 08/19/2008 19:06



speed — gusts — direction +
Last Observed Sample: 08/18/2008 18:48 (EDT)
Wind Speed: 9 knots Gusts: 17 knots Direction: 074° T

[Naples, FL - Station Map](#) [Return to List](#)

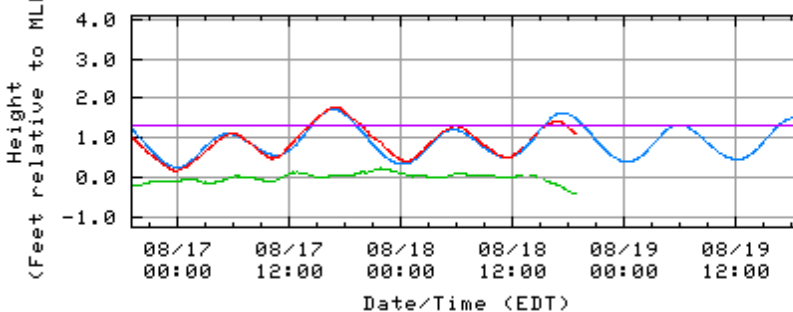
NOAA/NOS/CO-OPS
Barometric Pressure Plot
8725110 Naples, FL
from 08/16/2008 19:06 - 08/19/2008 19:06



barometric pressure —
Last Observed Sample: 08/18/2008 18:48 (EDT)
Barometric Pressure: 1008.3 mb

[Fort Myers, FL - Station Map](#) [Return to List](#)

NOAA/NOS/CO-OPS
Preliminary 6 min. Water Level vs. Predicted Plot
8725520 Fort Myers, FL
from 08/16/2008 19:06 - 08/19/2008 19:06



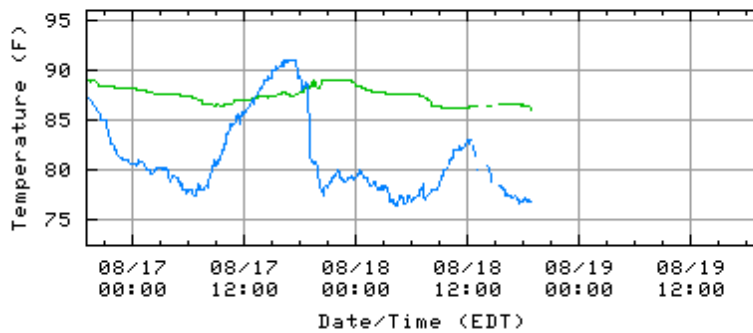
Predicted WL — (Obs-Pred) —
Observed WL — MHHW —
Last Observed Sample: 08/18/2008 18:48 (EDT)

Relative to **MLLW**: Observed: 1.12 ft. Predicted: 1.51 ft. Residual: -0.39 ft.

Historical Maximum Water Level: 11/23/1988, 3.41 ft. above **MHHW**

Fort Myers, FL - Station Map [Return to List](#)

NOAA/NOS/CO-OPS
Air/Water Temperature Plot
8725520 Fort Myers, FL
from 08/16/2008 19:06 - 08/19/2008 19:06



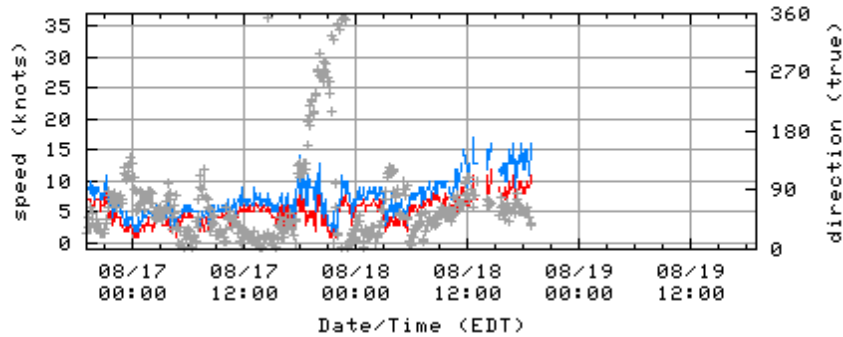
water temp. — air temp —

Last Observed Sample: 08/18/2008 18:48 (EDT)

Water Temperature: 86.2° F Air Temperature: 76.8° F

Fort Myers, FL - Station Map [Return to List](#)

NOAA/NOS/CO-OPS
Wind Speed/Gusts/Dir
8725520 Fort Myers, FL
from 08/16/2008 19:06 - 08/19/2008 19:06



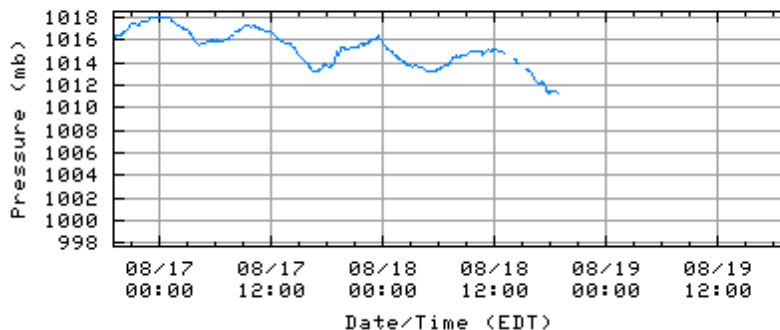
speed — gusts — direction +

Last Observed Sample: 08/18/2008 18:48 (EDT)

Wind Speed: 10 knots Gusts: 16 knots Direction: 039° T

Fort Myers, FL - Station Map [Return to List](#)

NOAA/NOS/CO-OPS
Barometric Pressure Plot
8725520 Fort Myers, FL
from 08/16/2008 19:06 - 08/19/2008 19:06



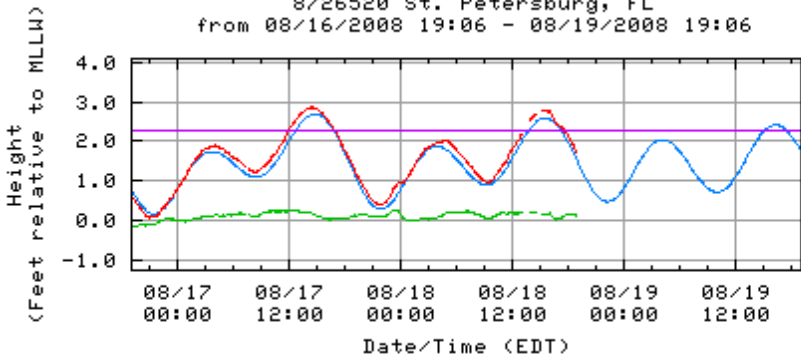
barometric pressure —

Last Observed Sample: 08/18/2008 18:48 (EDT)

Barometric Pressure: 1011.3 mb

[St. Petersburg, FL - Station Map](#) [Return to List](#)

NOAA/NOS/CO-OPS
 Preliminary 6 min. Water Level vs. Predicted Plot
 8726520 St. Petersburg, FL
 from 08/16/2008 19:06 - 08/19/2008 19:06



Predicted WL — (Obs-Pred) —
 Observed WL — MHHW —

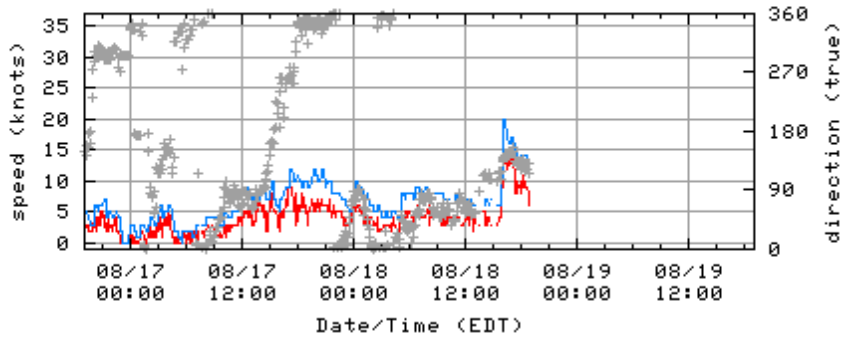
Last Observed Sample: 08/18/2008 18:48 (EDT)

Relative to **MLLW**: Observed: 1.77 ft. Predicted: 1.62 ft. Residual: 0.15 ft.

Historical Maximum Water Level: 08/31/1985, 4 ft. above **MHHW**

[St. Petersburg, FL - Station Map](#) [Return to List](#)

NOAA/NOS/CO-OPS
 Wind Speed/Gusts/Dir
 8726520 St. Petersburg, FL
 from 08/16/2008 19:06 - 08/19/2008 19:06



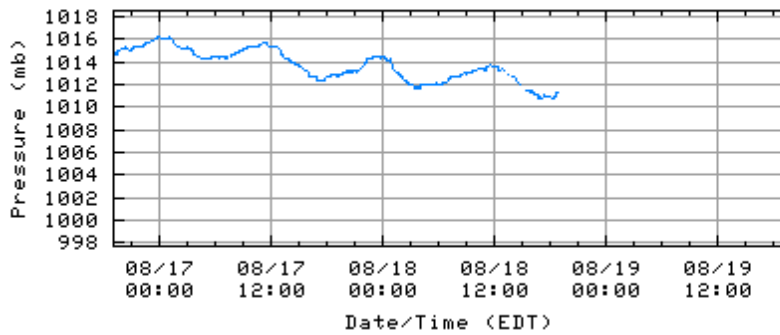
speed — gusts — direction +

Last Observed Sample: 08/18/2008 18:48 (EDT)

Wind Speed: 8 knots Gusts: 13 knots Direction: 130° T

[St. Petersburg, FL - Station Map](#) [Return to List](#)

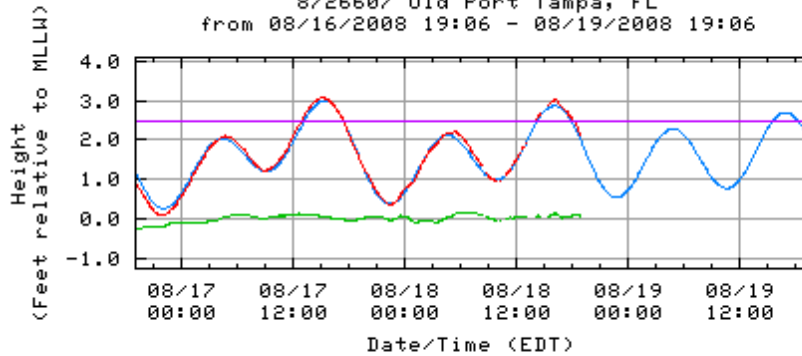
NOAA/NOS/CO-OPS
Barometric Pressure Plot
8726520 St. Petersburg, FL
from 08/16/2008 19:06 - 08/19/2008 19:06



barometric pressure —
Last Observed Sample: 08/18/2008 18:48 (EDT)
Barometric Pressure: 1011.2 mb

[Old Port Tampa, FL - Station Map](#) [Return to List](#)

NOAA/NOS/CO-OPS
Preliminary 6 min. Water Level vs. Predicted Plot
8726607 Old Port Tampa, FL
from 08/16/2008 19:06 - 08/19/2008 19:06



Predicted WL — (Obs-Pred) —
Observed WL — MHHW —

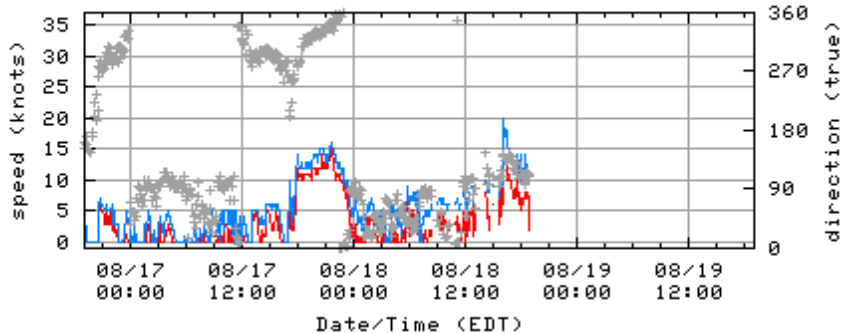
Last Observed Sample: 08/18/2008 18:48 (EDT)

Relative to MLLW: Observed: 2.18 ft. Predicted: 2.08 ft. Residual: 0.10 ft.

Historical Maximum Water Level: 10/08/1996, 3.56 ft. above MHHW

[Old Port Tampa, FL - Station Map](#) [Return to List](#)

NOAA/NOS/CO-OPS
Wind Speed/Gusts/Dir
8726607 Old Port Tampa, FL
from 08/16/2008 19:00 - 08/19/2008 19:00



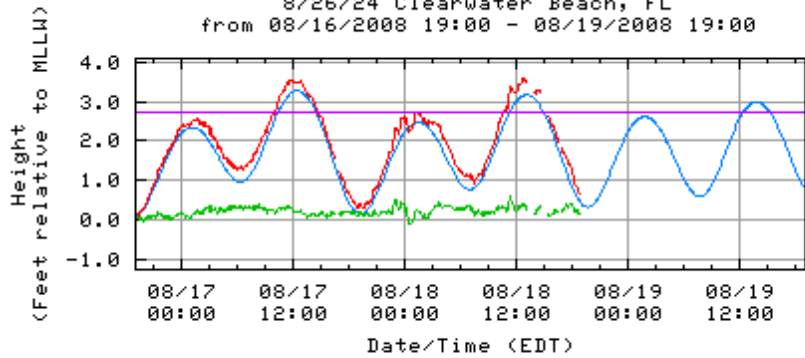
speed — gusts — direction +

Last Observed Sample: 08/18/2008 18:48 (EDT)

Wind Speed: 2 knots Gusts: 10 knots Direction: 113° T

Clearwater Beach, FL - Station Map [Return to List](#)

NOAA/NOS/CO-OPS
 Preliminary 6 min. Water Level vs. Predicted Plot
 8726724 Clearwater Beach, FL
 from 08/16/2008 19:00 - 08/19/2008 19:00



Predicted WL — (Obs-Pred) —
 Observed WL — MHHW —

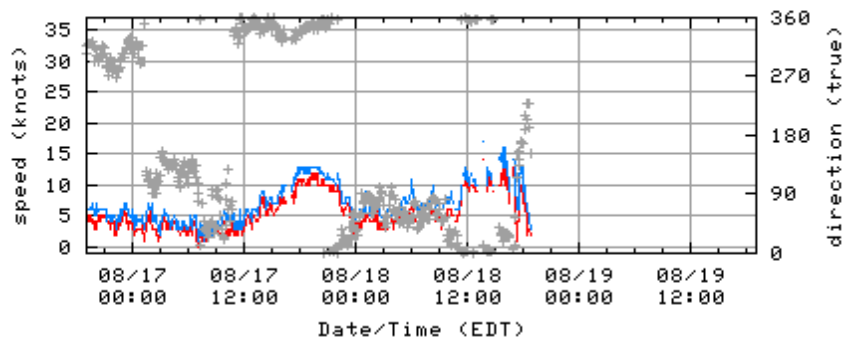
Last Observed Sample: 08/18/2008 18:42 (EDT)

Relative to **MLLW**: Observed: 0.66 ft. Predicted: 0.50 ft. Residual: 0.16 ft.

Historical Maximum Water Level: 03/13/1993, 4.05 ft. above **MHHW**

Clearwater Beach, FL - Station Map [Return to List](#)

NOAA/NOS/CO-OPS
 Wind Speed/Gusts/Dir
 8726724 Clearwater Beach, FL
 from 08/16/2008 19:00 - 08/19/2008 19:00



speed — gusts — direction +

Last Observed Sample: 08/18/2008 18:42 (EDT)

Wind Speed: 2 knots Gusts: 3 knots Direction: 152° T

Center for Operational Oceanographic Products & Services (CO-OPS) | National Ocean Service (NOS)
 National Oceanic and Atmospheric Administration | U.S. Department of Commerce