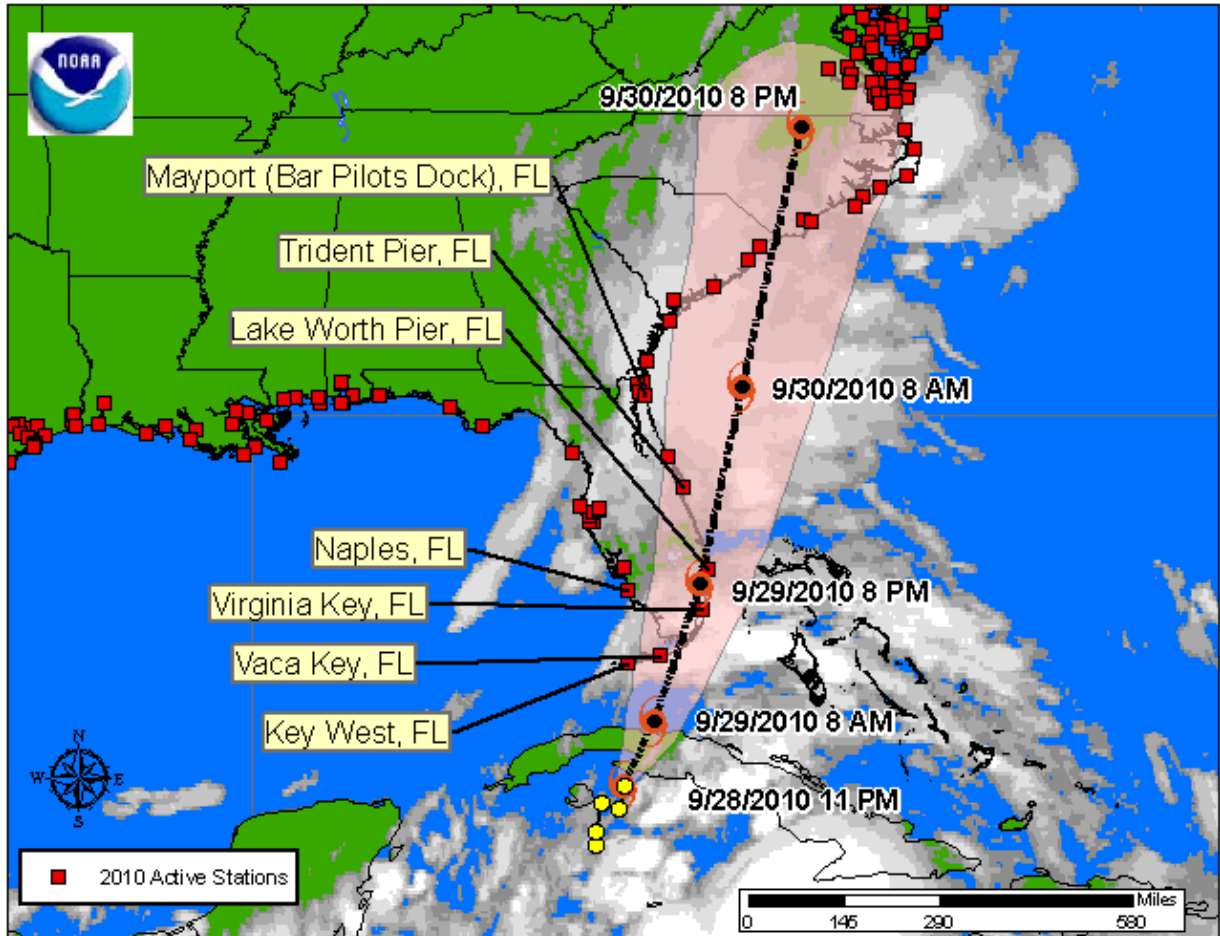




Tropical Depression SIXTEEN QuickLook  
Posted: 00:00 EDT 09/29/2010

NOAA and NOAA Partnership Stations Relative to the Storm



**Storm Analysis**

As of 09/29/2010 0000 EDT, water levels across southern Florida are at or near predicted. Barometric pressure is gradually falling across the region.

Water Level and Meteorological plots available below are updated automatically. Water level predictions relative to Mean Lower Low Water are:

Key West, FL Next predicted high tides are 2.12 ft (0.65 m) at 09/29/2010 01:19 EDT and 1.30 ft (0.40 m) at 09/29/2010 15:16 EDT.

Vaca Key, FL Next predicted high tides are 1.35 ft (0.41 m) at 09/29/2010 05:40 EDT and 1.32 ft (0.40 m) at 09/30/2010 06:27 EDT.

Virginia Key, FL Next predicted high tides are 2.32 ft (0.71 m) at 09/29/2010 00:56 EDT and 2.37 ft (0.72 m) at 09/29/2010 13:53 EDT.

Naples, FL Next predicted high tides are 3.09 ft (0.94 m) at 09/29/2010 02:52 EDT and 2.32 ft (0.71 m) at 09/29/2010 18:18 EDT.

Lake Worth Pier, FL Next predicted high tides are 3.11 ft (0.95 m) at 09/29/2010 12:41 EDT and 2.94 ft (0.90 m) at 09/30/2010 00:42 EDT.

Trident Pier, FL Next predicted high tides are 4.25 ft (1.29 m) at 09/29/2010 00:27 EDT and 3.33 ft (1.01 m) at 09/30/2010 00:40 EDT.

Mayport (Bar Pilots Dock), FL Next predicted high tides are 4.67 ft (1.42 m) at 09/29/2010 00:41 EDT and 5.37 ft (1.64 m) at 09/29/2010 13:10 EDT.

For additional data, please see the [Center for Operational Oceanographic Products & Services](#) website. For more information or archived products and reports, please see the [Storm QuickLook Homepage](#).

Analyst: LSB

---

**SELECT NATIONAL HURRICANE CENTER ADVISORY INFORMATION:**

**TROPICAL DEPRESSION SIXTEEN ADVISORY NUMBER**

**1100 PM EDT TUE SEP 28 2010**

**CENTER OF THE DEPRESSION APPROACHING THE SOUTH COAST OF CUBA**

**SUMMARY OF 1100 PM EDT INFORMATION**

---

**LOCATION...21.9N 81.9W  
ABOUT 95 MI SSE OF HAVANA CUBA  
ABOUT 290 MI 465 KM SSW OF MIAMI FLORIDA  
MAXIMUM SUSTAINED WINDS...35 MPH**

**PRESENT MOVEMENT NE OR 35 DEGREES AT 8 MPH.**

**MINIMUM CENTRAL PRESSURE 997 MB.**

**WATCHES AND WARNINGS**

---

**SUMMARY OF WATCHES AND WARNINGS IN EFFECT**

**A TROPICAL STORM WARNING IS IN EFFECT FOR...**

- \* JUPITER INLET SOUTHWARD TO EAST CAPE SABLE AND FLORIDA BAY**
- \* THE FLORIDA KEYS**

**A TROPICAL STORM WATCH IS IN EFFECT FOR...**

- \* NORTH OF JUPITER INLET TO SEBASTIAN INLET FLORIDA**
- \* NORTH OF EAST CAPE SABLE TO CHOKOLOSKEE FLORIDA**

**A TROPICAL STORM WARNING MEANS THAT TROPICAL STORM CONDITIONS ARE EXPECTED SOMEWHERE WITHIN THE WARNING AREA WITHIN 36 HOURS.**

**A TROPICAL STORM WATCH MEANS THAT TROPICAL STORM CONDITIONS ARE POSSIBLE WITHIN THE WATCH AREA...GENERALLY WITHIN 48 HOURS.**

**FOR STORM INFORMATION SPECIFIC TO YOUR AREA IN THE UNITED STATES INCLUDING POSSIBLE INLAND WATCHES AND WARNINGS. PLEASE MONITOR PRODUCTS ISSUED BY YOUR LOCAL NATIONAL WEATHER SERVICE FORECAST OFFICE. FOR STORM INFORMATION SPECIFIC TO YOUR AREA OUTSIDE THE UNITED STATES. PLEASE MONITOR PRODUCTS ISSUED BY YOUR NATIONAL METEOROLOGICAL SERVICE.**

**DISCUSSION AND 48-HOUR OUTLOOK**

**AT 1100 PM EDT THE CENTER OF TROPICAL DEPRESSION SIXTEEN WAS LOCATED NEAR LATITUDE 21.9 NORTH LONGITUDE 81.9 WEST.**

**THE DEPRESSION IS MOVING TOWARD THE NORTHEAST NEAR 8 MPH AND THIS GENERAL MOTION IS EXPECTED TO CONTINUE WITH AN INCREASE IN FORWARD SPEED DURING THE NEXT 24 TO 36 HOURS. ON THE FORECAST TRACK THE CENTER OF THE TROPICAL CYCLONE WILL CROSS CUBA TONIGHT AND BE NEAR OR OVER SOUTHEASTERN FLORIDA BY WEDNESDAY EVENING.**

**MAXIMUM SUSTAINED WINDS ARE NEAR 35 MPH WITH HIGHER GUSTS MAINLY IN BANDS WELL TO THE EAST AND SOUTHEAST OF THE CENTER. SOME STRENGTHENING IS FORECAST DURING THE NEXT 12 TO 24 HOURS AND THE DEPRESSION IS EXPECTED TO BECOME A TROPICAL STORM TONIGHT OR WEDNESDAY BEFORE MERGING WITH A FRONTAL ZONE ON THURSDAY.**

**ESTIMATED MINIMUM CENTRAL PRESSURE IS 997 MB.**

**HAZARDS AFFECTING LAND**

**THREATENING FLASH FLOODS AND MUD SLIDES. RAIN ACCUMULATIONS OF 4 TO 8 INCHES ARE POSSIBLE OVER PORTIONS OF EXTREME SOUTHERN FLORIDA AND THE FLORIDA KEYS.**

**WIND...TROPICAL STORM CONDITIONS WILL SPREAD INTO PORTIONS OF SOUTH FLORIDA ON WEDNESDAY.**

**TORNADOES...ISOLATED TORNADOES ARE POSSIBLE OVER SOUTHEASTERN FLORIDA AND THE FLORIDA KEYS TONIGHT AND WEDNESDAY.**

**NEXT ADVISORY**

-----

**NEXT INTERMEDIATE ADVISORY...200 AM EDT.**

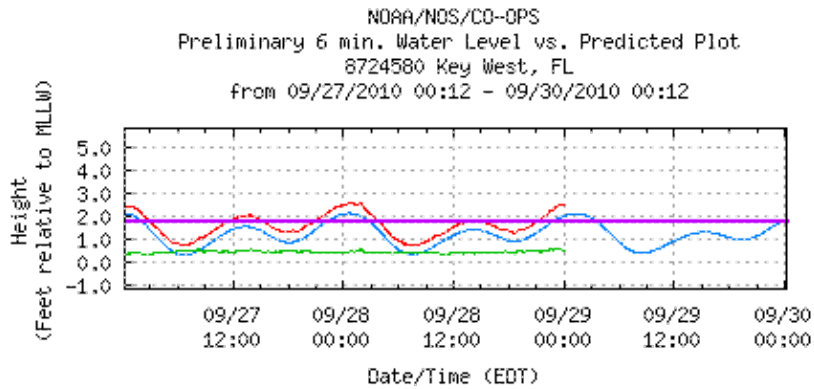
**NEXT COMPLETE ADVISORY...500 AM EDT.**

**FORECASTER BEVEN**

For the purpose of timely release, data contained within this QuickLook have undergone a "limited" NOS Quality Assurance/Control; however, the data have not yet undergone final verification. All data subject to NOS verification.

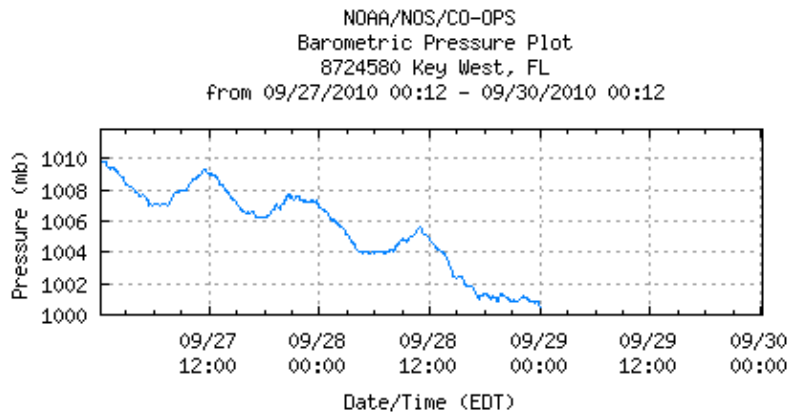
Jump to: [Key West - Water Level](#), [Key West - Barometric](#), [Key West - Air/Water Temp](#), [Vaca Key - Water Level](#), [Vaca Key - Winds](#), [Vaca Key - Barometric](#), [Vaca Key - Air/Water Temp](#), [Virginia Key - Water Level](#), [Virginia Key - Winds](#), [Virginia Key - Air/Water Temp](#), [Naples - Water Level](#), [Naples - Winds](#), [Naples - Barometric](#), [Naples - Air/Water Temp](#), [Lake Worth Pier - Water Level](#), [Lake Worth Pier - Winds](#), [Lake Worth Pier - Barometric](#), [Lake Worth Pier - Air/Water Temp](#), [Trident Pier - Water Level](#), [Trident Pier - Winds](#), [Trident Pier - Barometric](#), [Trident Pier - Air/Water Temp](#), [Mayport \(Bar Pilots Dock\) - Water Level](#).

**Key West, FL** - [Return to List](#)



Last Observed Sample: 09/29/2010 00:00 (EDT)  
Relative to **MLLW**: **Observed: 2.53 ft. Predicted: 2.01 ft. Residual: 0.52 ft.**  
Historical Maximum Water Level: Oct 24 2005, 3.14 ft. above **MHHW**

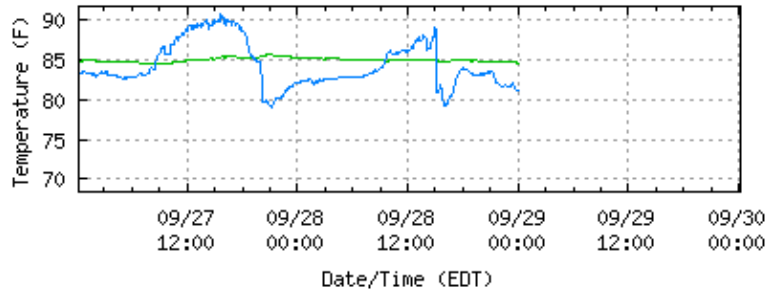
**Key West, FL** - [Return to List](#)



Last Observed Sample: 09/29/2010 00:00 (EDT)  
**Barometric Pressure: 1000.5 mb**

**Key West, FL** - [Return to List](#)

NOAA/NOS/CO-OPS  
 Air/Water Temperature Plot  
 8724580 Key West, FL  
 from 09/27/2010 00:12 - 09/30/2010 00:12



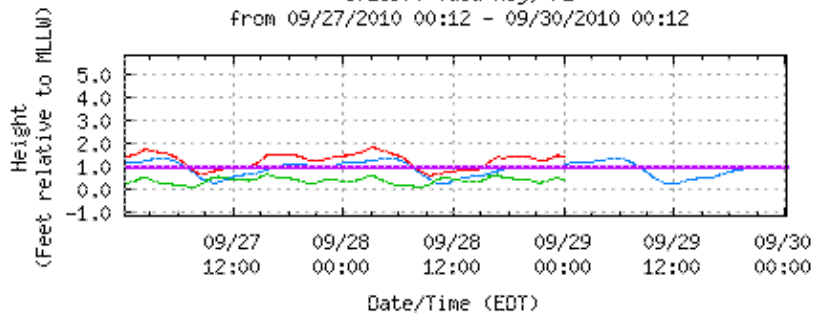
water temp. — air temp —

Last Observed Sample: 09/29/2010 00:00 (EDT)

Water Temperature: 84.6° F Air Temperature: 81.1° F

**Vaca Key, FL** - [Return to List](#)

NOAA/NOS/CO-OPS  
 Preliminary 6 min. Water Level vs. Predicted Plot  
 8723970 Vaca Key, FL  
 from 09/27/2010 00:12 - 09/30/2010 00:12



Predicted WL — (Obs-Pred) —  
 Observed WL — MHHW —

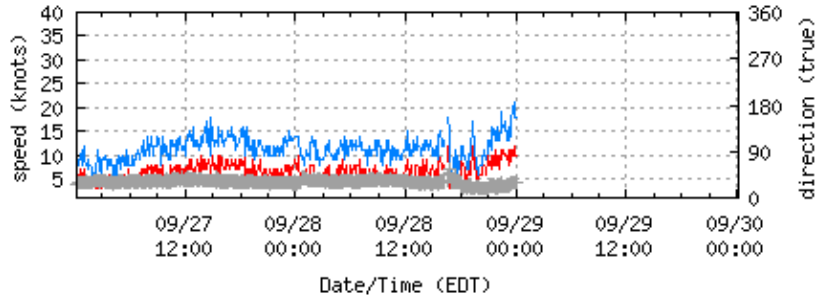
Last Observed Sample: 09/29/2010 00:00 (EDT)

Relative to **MLLW**: Observed: 1.44 ft. Predicted: 1.04 ft. Residual: 0.40 ft.

Historical Maximum Water Level: Oct 7 1974, 1.42 ft. above **MHHW**

**Vaca Key, FL** - [Return to List](#)

NOAA/NDS/CO-OPS  
Wind Speed/Gusts/Dir  
8723970 Vaca Key, FL  
from 09/27/2010 00:12 - 09/30/2010 00:12



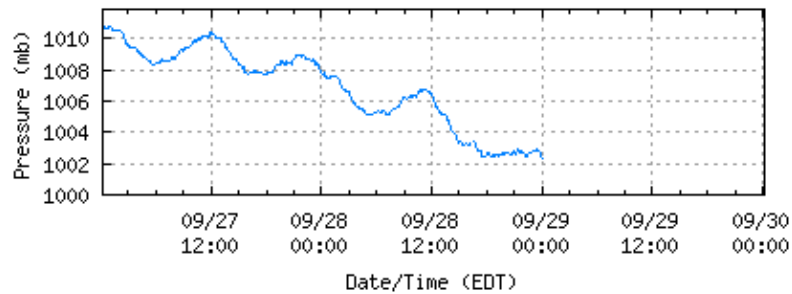
speed — gusts — direction +

Last Observed Sample: 09/29/2010 00:00 (EDT)

Wind Speed: 10 knots Gusts: 18 knots Direction: 028° T

**Vaca Key, FL** - [Return to List](#)

NOAA/NDS/CO-OPS  
Barometric Pressure Plot  
8723970 Vaca Key, FL  
from 09/27/2010 00:12 - 09/30/2010 00:12



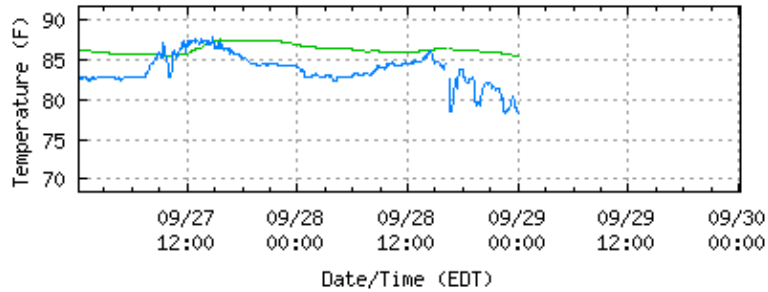
barometric pressure —

Last Observed Sample: 09/29/2010 00:00 (EDT)

Barometric Pressure: 1002.3 mb

**Vaca Key, FL** - [Return to List](#)

NOAA/NOS/CO-OPS  
 Air/Water Temperature Plot  
 8723970 Vaca Key, FL  
 from 09/27/2010 00:12 - 09/30/2010 00:12



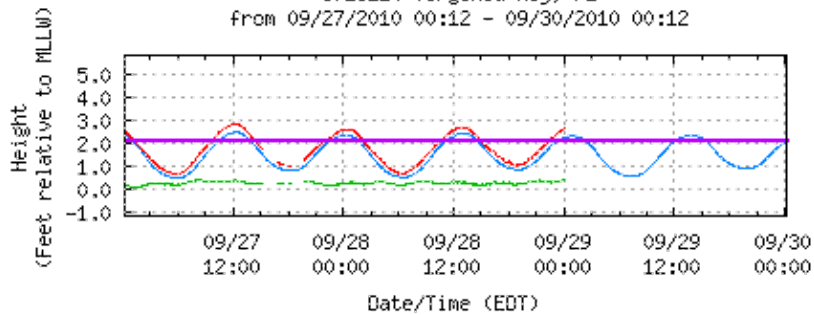
water temp. — air temp —

Last Observed Sample: 09/29/2010 00:00 (EDT)

Water Temperature: 85.5° F Air Temperature: 78.3° F

**Virginia Key, FL** - [Return to List](#)

NOAA/NOS/CO-OPS  
 Preliminary 6 min. Water Level vs. Predicted Plot  
 8723214 Virginia Key, FL  
 from 09/27/2010 00:12 - 09/30/2010 00:12



Predicted WL — (Obs-Pred) —  
 Observed WL — MHHW —

Last Observed Sample: 09/29/2010 00:00 (EDT)

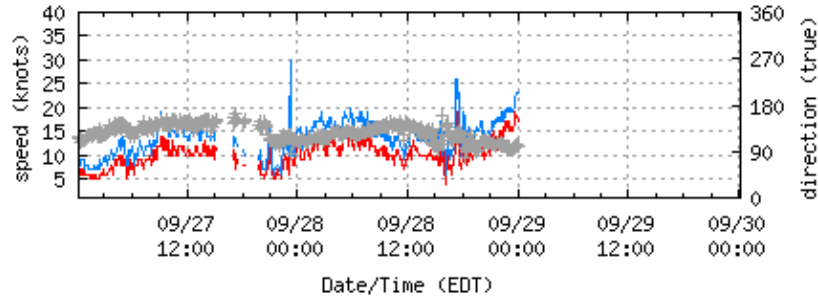
Relative to **MLLW**: Observed: 2.66 ft. Predicted: 2.25 ft. Residual: 0.41 ft.

Historical Maximum Water Level: Oct 24 2005, 2.58 ft. above **MHHW**



**Virginia Key, FL** - [Return to List](#)

NOAA/NDS/CO-OPS  
Wind Speed/Gusts/Dir  
8723214 Virginia Key, FL  
from 09/27/2010 00:12 - 09/30/2010 00:12



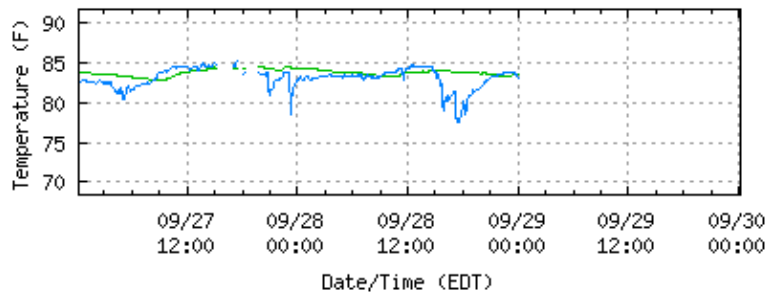
speed — gusts — direction +

**Last Observed Sample: 09/29/2010 00:00 (EDT)**

**Wind Speed: 17 knots Gusts: 23 knots Direction: 101° T**

**Virginia Key, FL** - [Return to List](#)

NOAA/NDS/CO-OPS  
Air/Water Temperature Plot  
8723214 Virginia Key, FL  
from 09/27/2010 00:12 - 09/30/2010 00:12

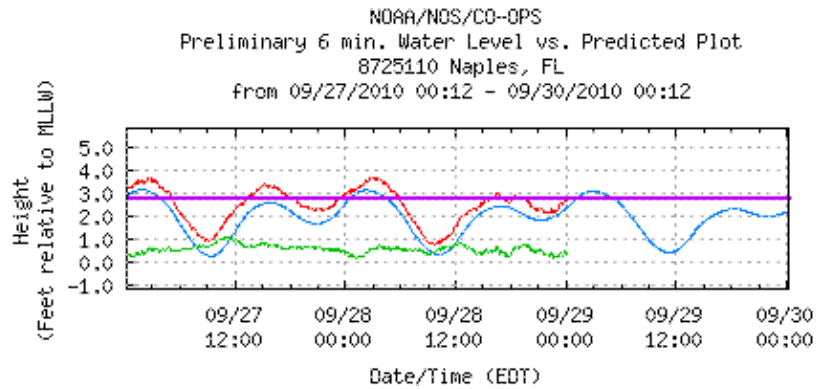


water temp. — air temp —

**Last Observed Sample: 09/29/2010 00:00 (EDT)**

**Water Temperature: 83.5° F Air Temperature: 83.1° F**

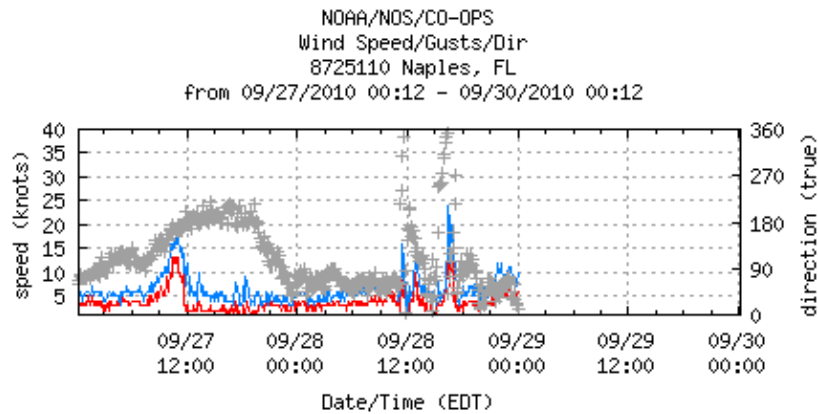
**Naples, FL** - [Return to List](#)



Predicted WL ——— (Obs-Pred) ———  
 Observed WL ——— MHHW ———

Last Observed Sample: 09/29/2010 00:00 (EDT)  
 Relative to **MLLW**: **Observed: 2.69 ft. Predicted: 2.35 ft. Residual: 0.34 ft.**  
 Historical Maximum Water Level: Dec 21 1972, 3.11 ft. above **MHHW**

**Naples, FL** - [Return to List](#)

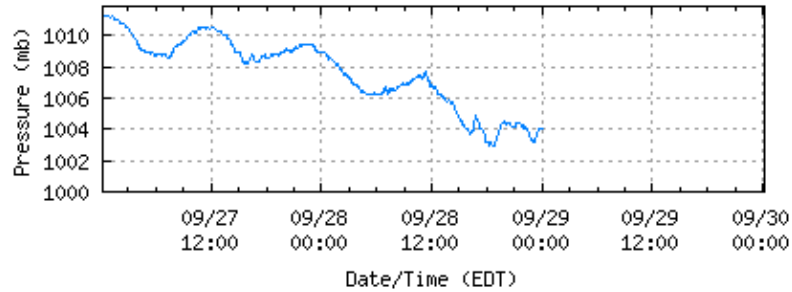


speed ——— gusts ——— direction +

Last Observed Sample: 09/29/2010 00:00 (EDT)  
**Wind Speed: 6 knots Gusts: 10 knots Direction: 010° T**

**Naples, FL** - [Return to List](#)

NOAA/NDS/CO-OPS  
Barometric Pressure Plot  
8725110 Naples, FL  
from 09/27/2010 00:12 - 09/30/2010 00:12



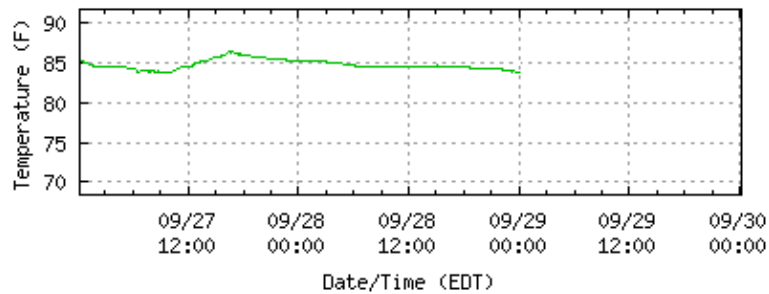
barometric pressure —

Last Observed Sample: 09/29/2010 00:00 (EDT)

Barometric Pressure: 1004.1 mb

**Naples, FL** - [Return to List](#)

NOAA/NDS/CO-OPS  
Air/Water Temperature Plot  
8725110 Naples, FL  
from 09/27/2010 00:12 - 09/30/2010 00:12

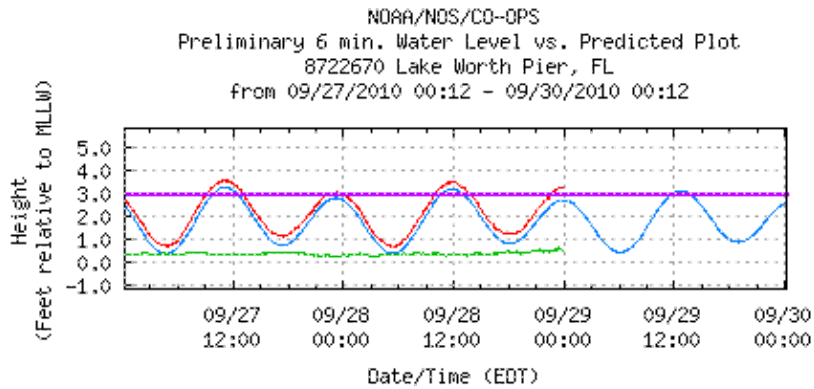


water temp. — air temp —

Last Observed Sample: 09/27/2010 00:12 (EDT)

Water Temperature: 85.1° F Air Temperature: n/a

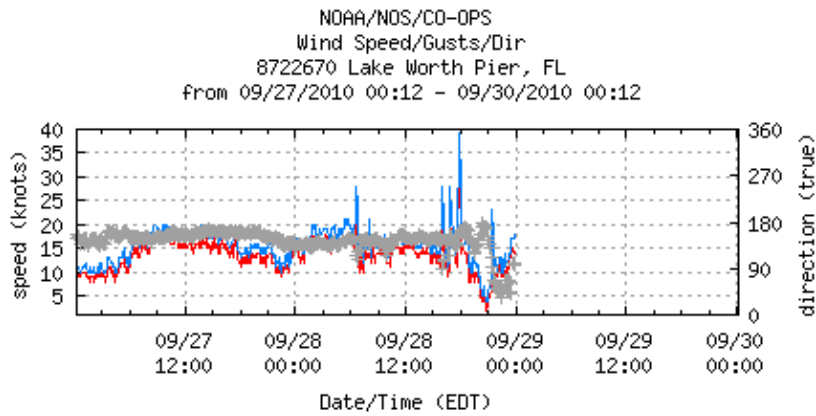
**Lake Worth Pier, FL** - [Return to List](#)



Predicted WL ——— (Obs-Pred) ———  
 Observed WL ——— MHHW ———

Last Observed Sample: 09/28/2010 23:54 (EDT)  
 Relative to **MLLW**: **Observed: 3.22 ft. Predicted: 2.71 ft. Residual: 0.51 ft.**  
 Historical Maximum Water Level: Nov 23 1984, 1.88 ft. above **MHHW**

**Lake Worth Pier, FL** - [Return to List](#)

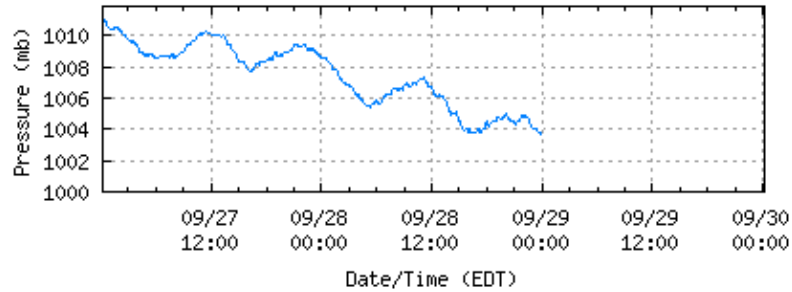


speed ——— gusts ——— direction +

Last Observed Sample: 09/28/2010 23:54 (EDT)  
**Wind Speed: 14 knots Gusts: 18 knots Direction: 102° T**

**Lake Worth Pier, FL** - [Return to List](#)

NOAA/NDS/CO-OPS  
Barometric Pressure Plot  
8722670 Lake Worth Pier, FL  
from 09/27/2010 00:12 - 09/30/2010 00:12



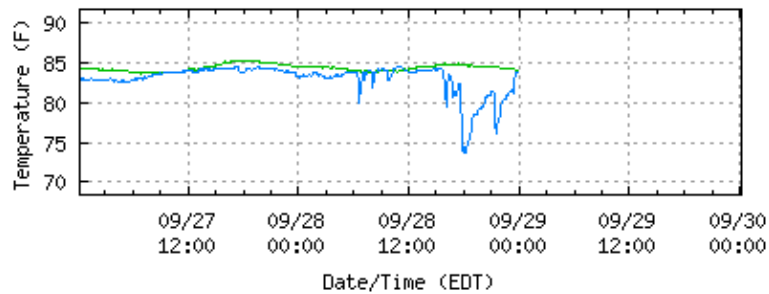
barometric pressure —

Last Observed Sample: 09/28/2010 23:54 (EDT)

Barometric Pressure: 1003.7 mb

**Lake Worth Pier, FL** - [Return to List](#)

NOAA/NDS/CO-OPS  
Air/Water Temperature Plot  
8722670 Lake Worth Pier, FL  
from 09/27/2010 00:12 - 09/30/2010 00:12

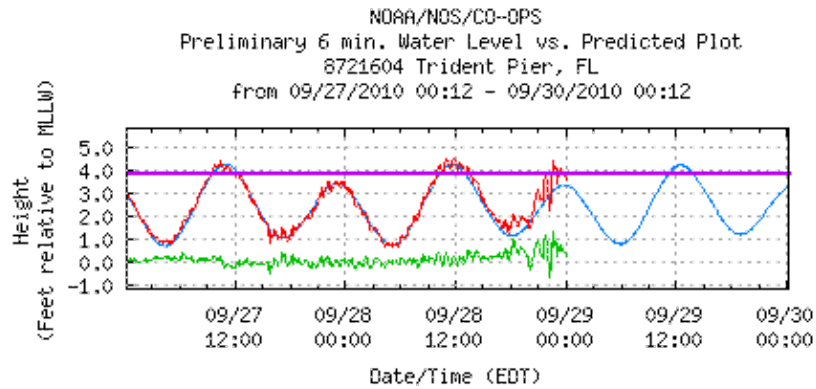


water temp. — air temp —

Last Observed Sample: 09/28/2010 23:54 (EDT)

Water Temperature: 84.0° F Air Temperature: 83.8° F

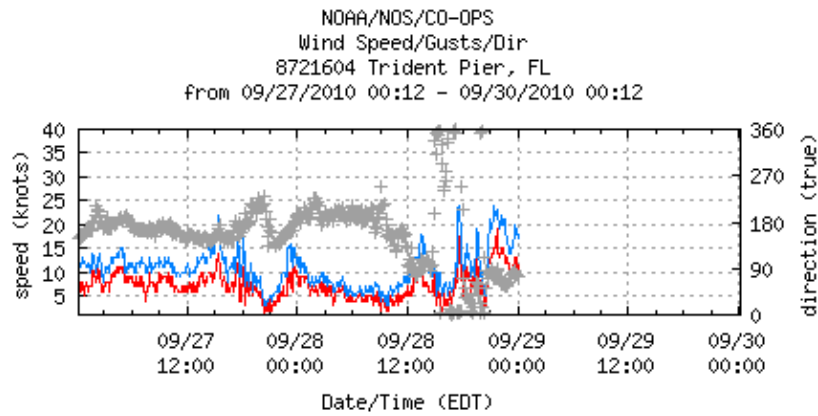
**Trident Pier, FL** - [Return to List](#)



Predicted WL ——— (Obs-Pred) ———  
 Observed WL ——— MHHW ———

Last Observed Sample: 09/29/2010 00:00 (EDT)  
 Relative to **MLLW**: **Observed: 3.58 ft. Predicted: 3.37 ft. Residual: 0.21 ft.**  
 Historical Maximum Water Level: Sep 26 2004, 4.13 ft. above **MHHW**

**Trident Pier, FL** - [Return to List](#)

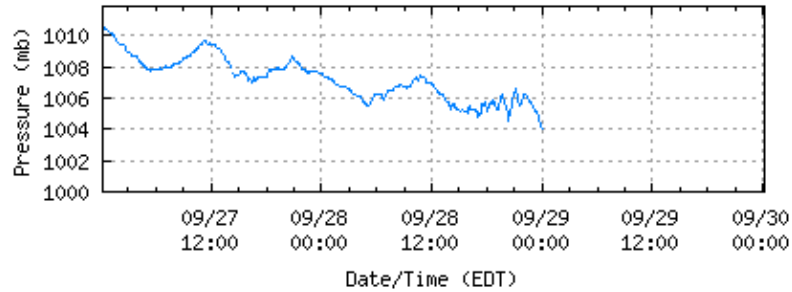


speed ——— gusts ——— direction +

Last Observed Sample: 09/29/2010 00:00 (EDT)  
**Wind Speed: 10 knots Gusts: 17 knots Direction: 075° T**

**Trident Pier, FL** - [Return to List](#)

NOAA/NDS/CO-OPS  
Barometric Pressure Plot  
8721604 Trident Pier, FL  
from 09/27/2010 00:12 - 09/30/2010 00:12



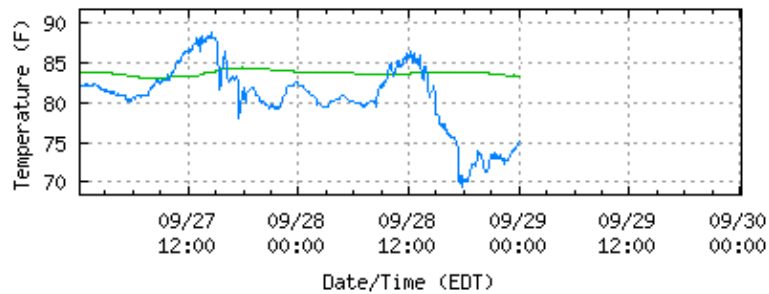
barometric pressure —

Last Observed Sample: 09/29/2010 00:00 (EDT)

Barometric Pressure: 1004.0 mb

**Trident Pier, FL** - [Return to List](#)

NOAA/NDS/CO-OPS  
Air/Water Temperature Plot  
8721604 Trident Pier, FL  
from 09/27/2010 00:12 - 09/30/2010 00:12

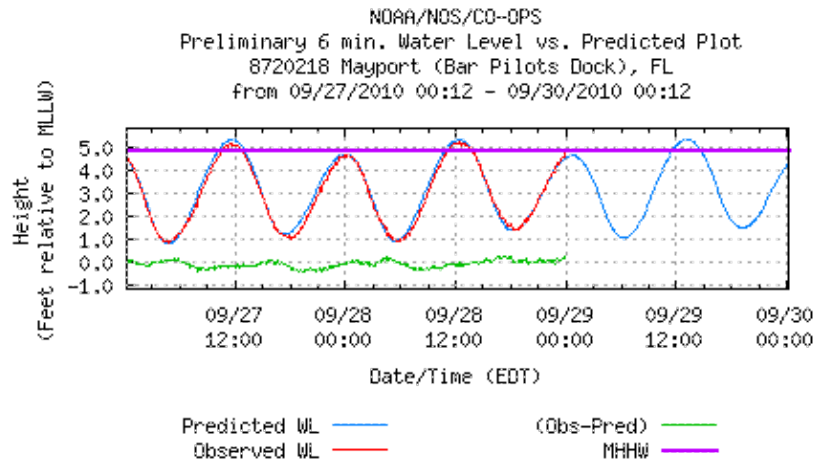


water temp. — air temp —

Last Observed Sample: 09/29/2010 00:00 (EDT)

Water Temperature: 83.3° F Air Temperature: 75.2° F

**Mayport (Bar Pilots Dock), FL** - [Return to List](#)



Last Observed Sample: 09/28/2010 23:54 (EDT)

Relative to **MLLW**: **Observed: 4.75 ft.** **Predicted: 4.55 ft.** **Residual: 0.20 ft.**

**Historical Maximum Water Level: Sep 27 2004, 2.48 ft. above MHHW**

Center for Operational Oceanographic Products & Services (CO-OPS) | National Ocean Service (NOS)  
National Oceanic and Atmospheric Administration | U.S. Department of Commerce