

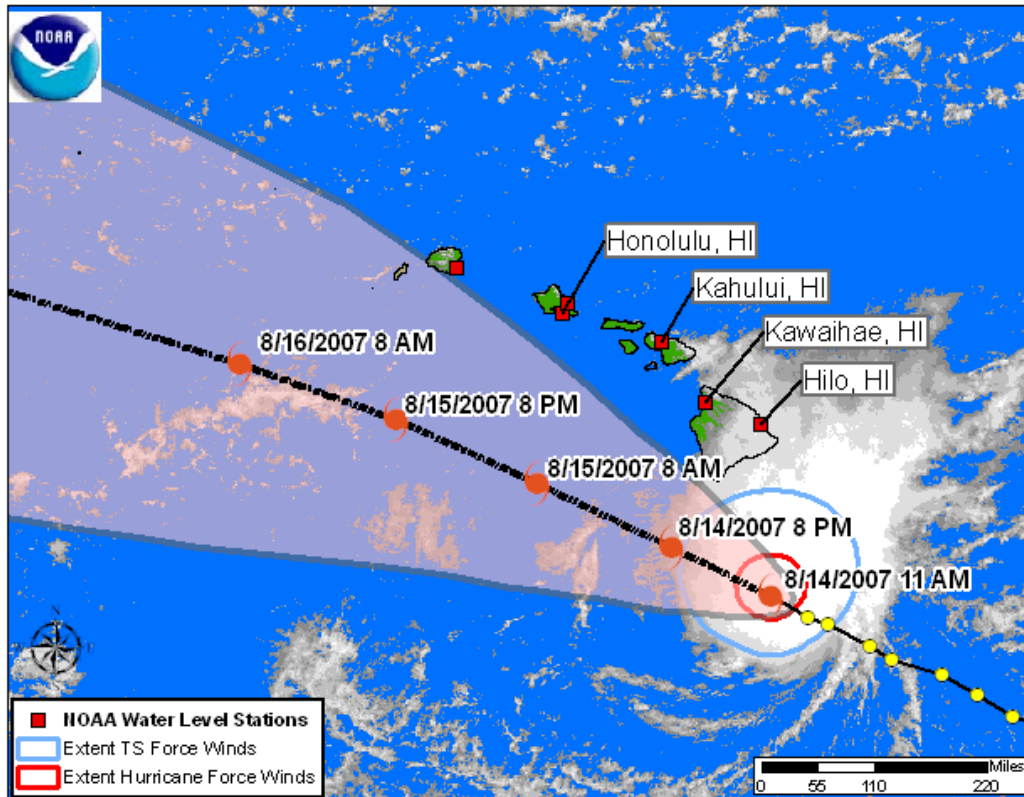


Hurricane FLOSSIE QUICKLOOK

Posted: 12:00 HST 08/14/2007



NOAA and NOAA Partnership Stations Relative to the Storm



Storm Analysis

Observations as of 1200 HST:

NOS water level at Hilo is around 0.34 ft (0.10 m) above predicted.
Next high tide at 08/14/2007 Tue 04:18PM HST.

NOS water level at Kawaihae is around 0.53 ft (0.16 m) above predicted.
Next high tide at 08/14/2007 Tue 05:19PM HST.

NOS water level at Honolulu is around 0.33 ft (0.10 m) above predicted.
Next high tide at 08/14/2007 Tue 05:07PM HST.

NOS water level at Kahului is around 0.24 ft (0.07 m) above predicted.
Next high tide at 08/14/2007 Tue 03:42PM HST.

SELECT **CENTRAL PACIFIC HURRICANE CENTER** ADVISORY INFORMATION:

...A TROPICAL STORM WARNING REMAINS IN EFFECT FOR THE BIG ISLAND OF HAWAII...

...A HURRICANE WATCH REMAINS IN EFFECT FOR THE BIG ISLAND OF HAWAII...

THE BIG ISLAND WILL SEE THE ONSET OF TROPICAL STORM FORCE WINDS... 39 MPH AND HIGHER...THIS AFTERNOON. EAST TO SOUTHEAST WINDS OF 40 TO 50 MPH WITH HIGHER GUSTS ARE LIKELY AS HURRICANE FLOSSIE PASSES SOUTH OF THE BIG ISLAND DURING THE DAY TODAY. ANY SHIFT IN THE FORECAST TRACK TOWARDS THE NORTH...CLOSER TO THE BIG ISLAND... WILL RESULT IN HIGHER WINDS.

SURF ALONG SOUTH FACING SHORES OF THE BIG ISLAND WILL BE RISING TO 20 TO 25 FT TODAY. SURF ALONG EAST FACING SHORES OF THE BIG ISLAND WILL BE 10 TO 12 FEET.

AT 1100 AM HST...2100Z...THE CENTER OF HURRICANE FLOSSIE WAS LOCATED NEAR LATITUDE 17.3 NORTH...LONGITUDE 154.9 WEST OR ABOUT 165 MILES SOUTH OF HILO...HAWAII AND ABOUT 340 MILES SOUTHEAST OF HONOLULU...OAHU.

FLOSSIE IS MOVING TOWARD THE WEST-NORTHWEST NEAR 10 MPH AND THIS MOTION IS EXPECTED TO CONTINUE THROUGH TODAY.

HURRICANE FORCE WINDS EXTEND OUTWARD UP TO 40 MILES FROM THE CENTER...AND TROPICAL STORM FORCE WINDS EXTEND OUTWARD UP TO 105 MILES.

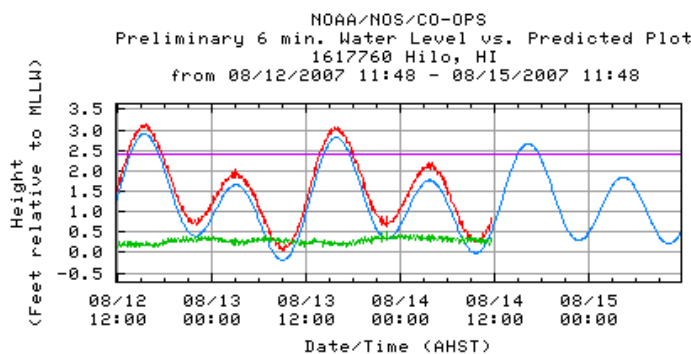
ESTIMATED MINIMUM CENTRAL PRESSURE IS 977 MB...28.85 INCHES.

Water level and meteorological plots are updated automatically. For more information, please see www.tidesandcurrents.noaa.gov.

For the purpose of timely release, data contained within this QUICKLOOK have undergone a "limited" NOS Quality Assurance/Control; however, the data have not yet undergone final verification. All data subject to NOS verification.

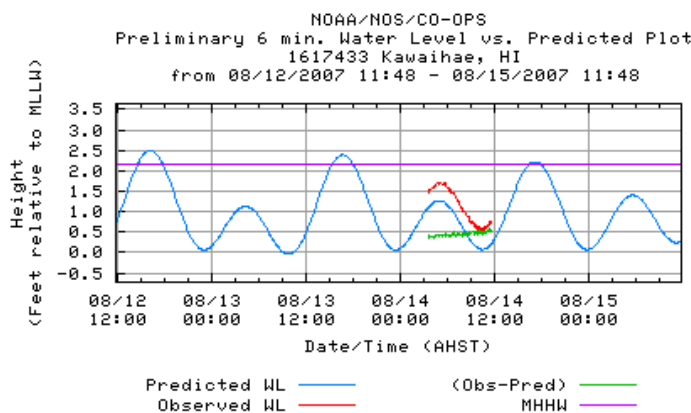
Jump to: [Hilo - Water Level](#), [Kawaihae - Winds](#), [Honolulu - Water Level](#), [Kahului - Water Level](#), [Kawaihae - Water Level](#), [Kawaihae - Barometric](#), [Honolulu - Barometric](#)

[Hilo, HI - Station Map](#) [Return to List](#)



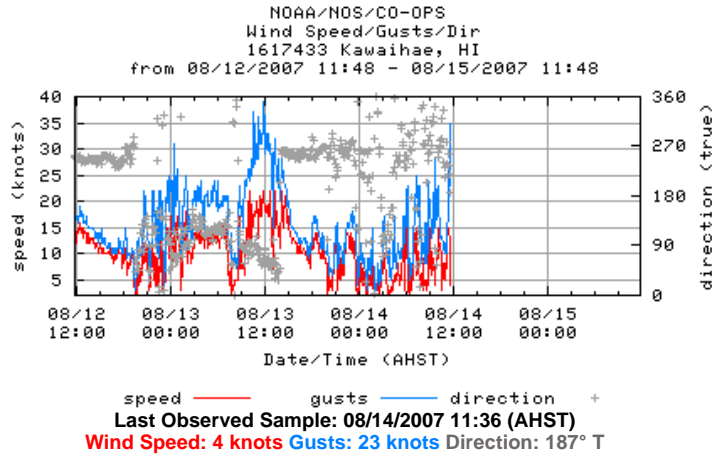
Last Observed Sample: 08/14/2007 11:36 (AHST)
Relative to MLLW: Observed: 0.84 ft. Predicted: 0.51 ft. Residual: 0.33 ft.
Historical Maximum Water Level: 01/20/1981, 1.37 ft. above MHHW

[Kawaihae, HI - Station Map](#) [Return to List](#)

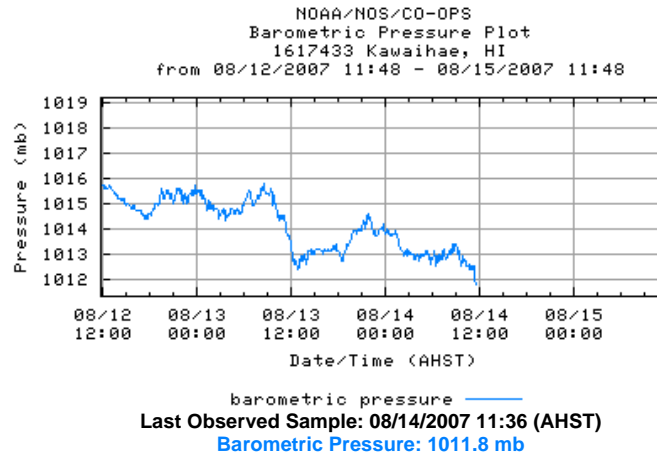


Last Observed Sample: 08/14/2007 11:36 (AHST)
 Relative to MLLW: Observed: 0.77 ft. Predicted: 0.21 ft. Residual: 0.56 ft.
 Historical Maximum Water Level: 07/21/2001, 1.08 ft. above MHHW

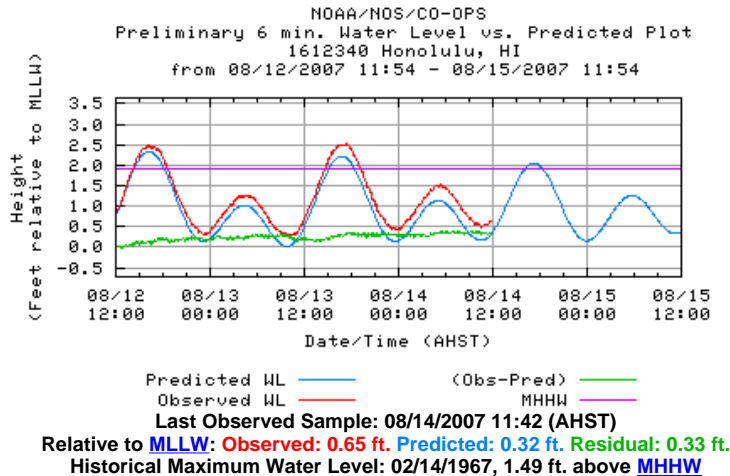
[Kawaihae, HI - Station Map](#) [Return to List](#)



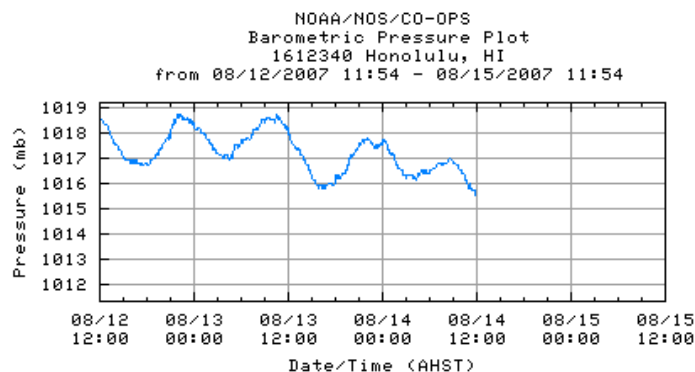
[Kawaihae, HI - Station Map](#) [Return to List](#)



[Honolulu, HI - Station Map](#) [Return to List](#)

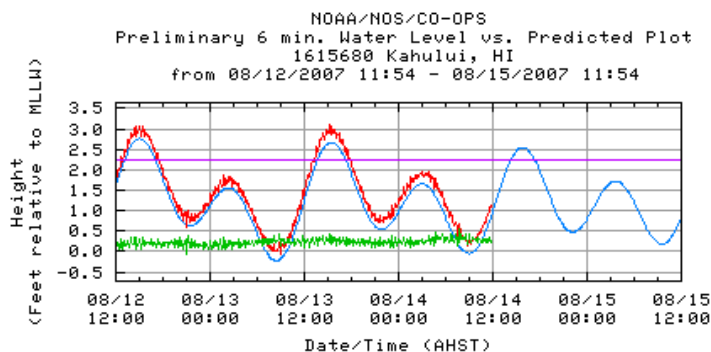


[Honolulu, HI - Station Map](#) [Return to List](#)



barometric pressure —
Last Observed Sample: 08/14/2007 11:42 (AHST)
Barometric Pressure: 1015.5 mb

[Kahului, HI - Station Map](#) [Return to List](#)



Predicted WL — (Obs-Pred) —
 Observed WL — MHHW —
Last Observed Sample: 08/14/2007 11:42 (AHST)
Relative to MLLW: Observed: 1.13 ft. Predicted: 0.88 ft. Residual: 0.25 ft.
Historical Maximum Water Level: 12/20/1968, 1.23 ft. above MHHW

Center for Operational Oceanographic Products & Services (CO-OPS) | National Ocean Service (NOS)
 National Oceanic and Atmospheric Administration | U.S. Department of Commerce