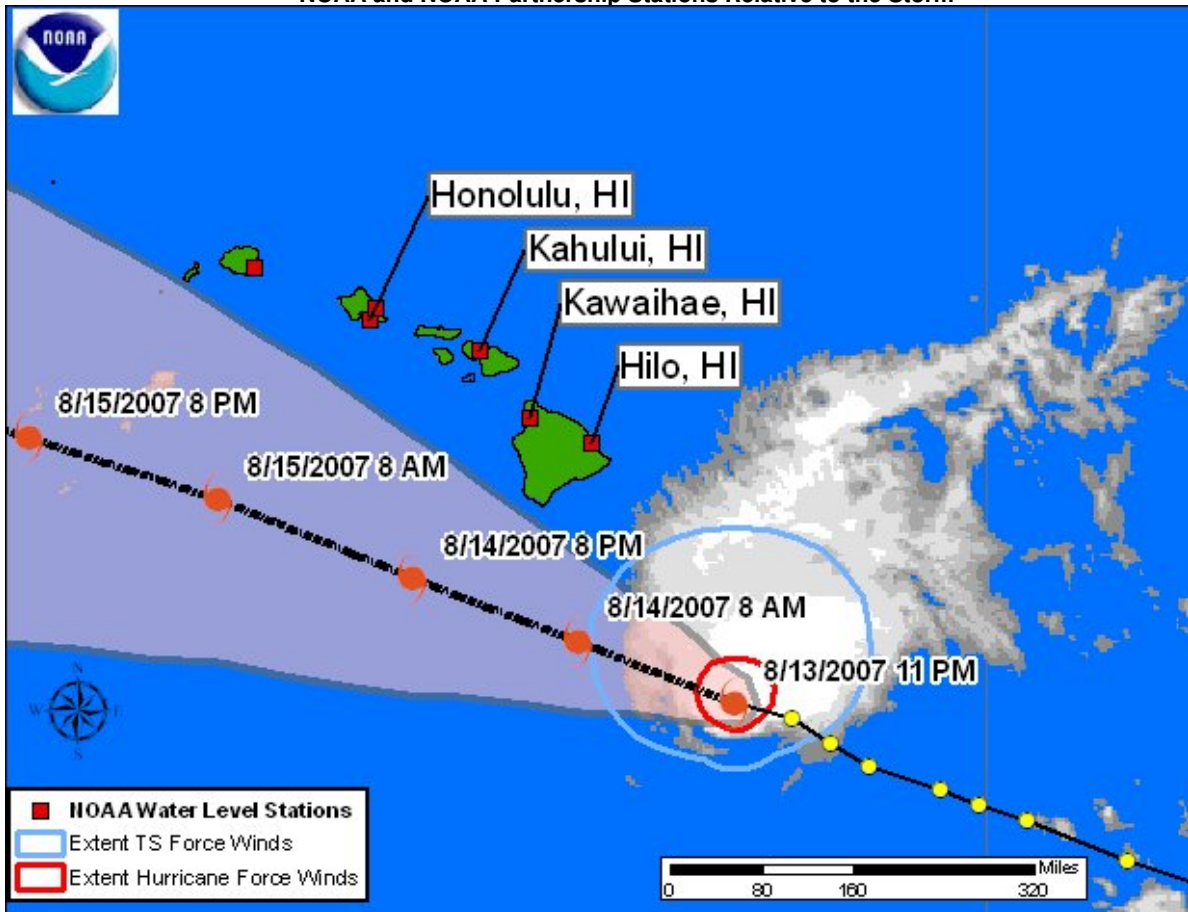




Hurricane FLOSSIE QUICKLOOK
Posted: 00:00 HST 08/14/2007

NOAA and NOAA Partnership Stations Relative to the Storm



Storm Analysis

Observations as of 0000 HST:

NOS water level at Hilo is around 0.44 ft (0.13 m) above predicted.
Next high tide at 08/14/2007 Tue 03:45AM LST.

NOS water level at Kahului is around 0.28 ft (0.09 m) above predicted.
Next high tide at 08/14/2007 Tue 02:53AM LST.

NOS water level at Honolulu is around 0.26 ft (0.08 m) above predicted.
Next high tide at 08/14/2007 Tue 04:56AM LST.

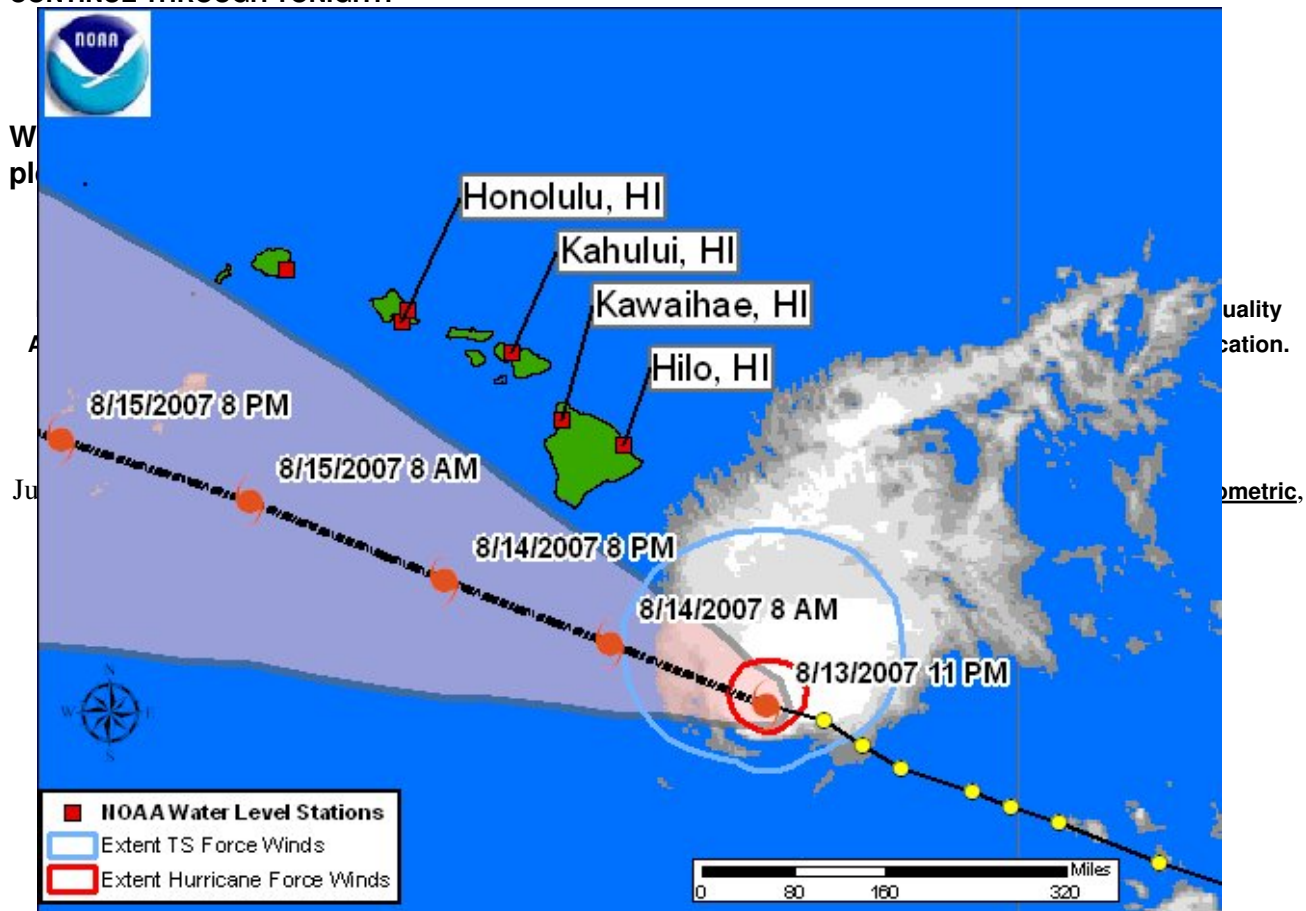
SELECT CENTRAL PACIFIC HURRICANE CENTER ADVISORY INFORMATION:

A TROPICAL STORM WARNING IS IN EFFECT FOR THE BIG ISLAND OF HAWAII.

A HURRICANE WATCH REMAINS IN EFFECT FOR THE BIG ISLAND OF HAWAII.

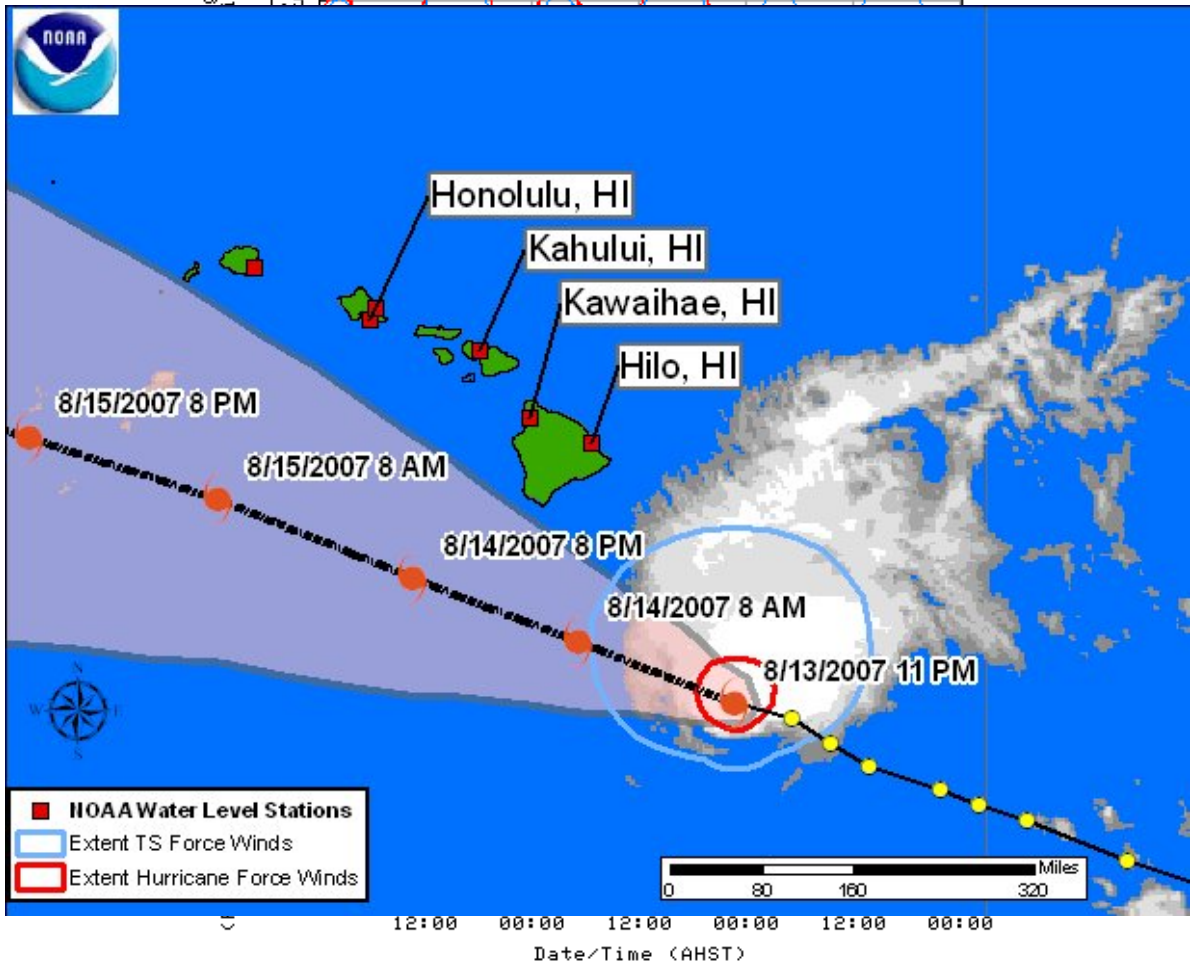
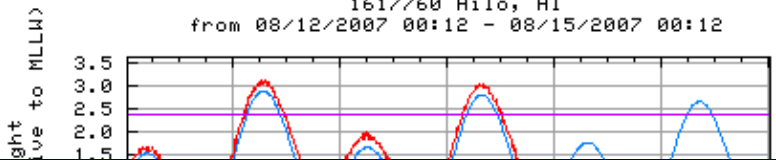
MOVEMENT TOWARD WEST-NORTHWEST NEAR 15 MPH. MAXIMUM SUSTAINED WINDS 115 MPH. MINIMUM CENTRAL PRESSURE 970 MB.

FLOSSIE IS MOVING TOWARD THE WEST-NORTHWEST NEAR 16 MPH AND THIS MOTION IS EXPECTED TO CONTINUE THROUGH TONIGHT.



Hilo, HI - Station Map [Return to List](#)

NOAA/NOS/CO-OPS
 Preliminary 6 min. Water Level vs. Predicted Plot
 1617760 Hilo, HI
 from 08/12/2007 00:12 - 08/15/2007 00:12



- NOAA Water Level Stations
- Extent TS Force Winds
- Extent Hurricane Force Winds

Predicted WL ——— (Obs-Pred) ———
 Observed WL ——— MHHW ———

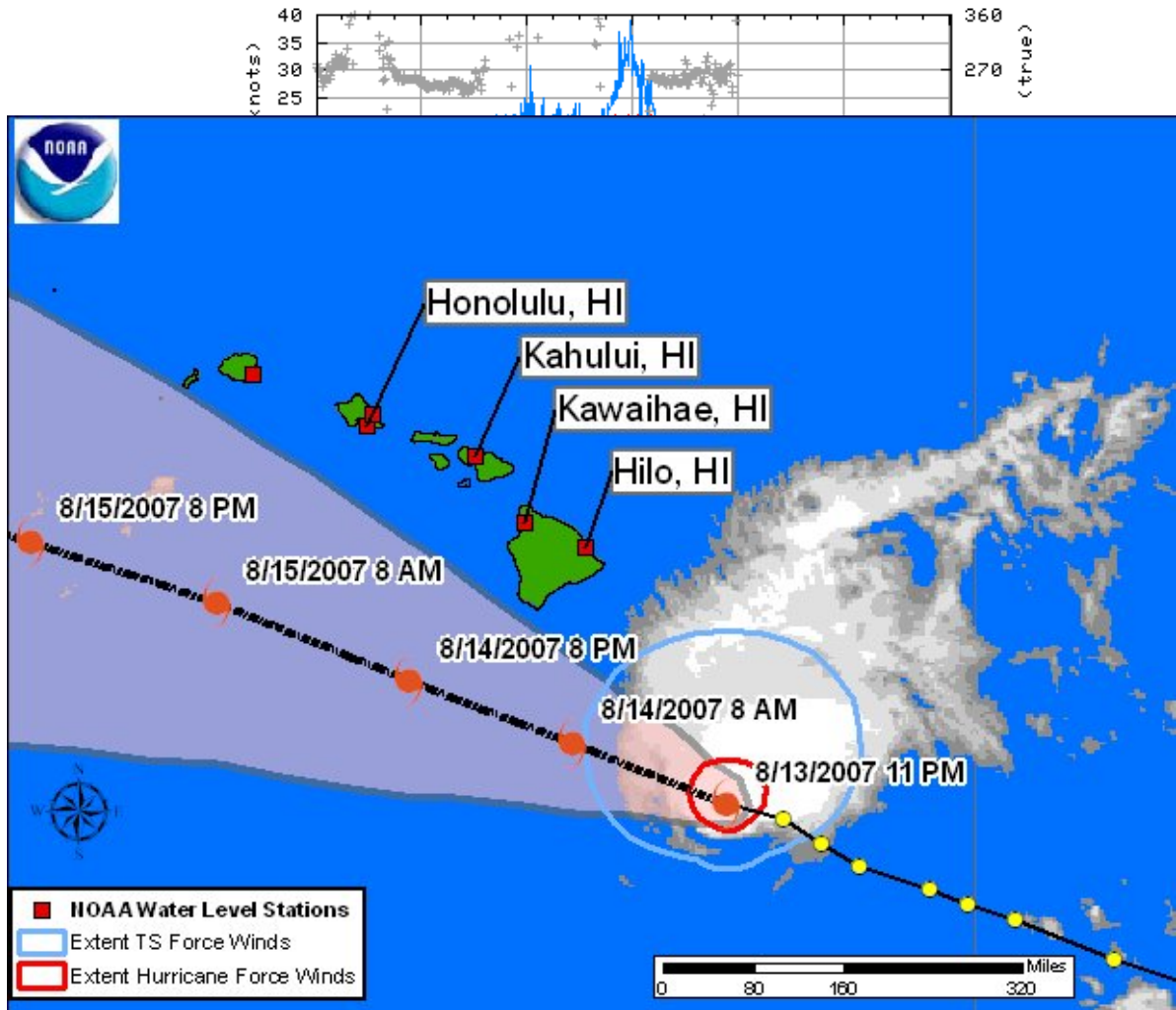
Last Observed Sample: 08/14/2007 00:06 (AHST)

Relative to **MLLW**: Observed: 1.26 ft. Predicted: 1.04 ft. Residual: 0.22 ft.

Historical Maximum Water Level: 12/20/1968, 1.23 ft. above **MHHW**

Kawaihae, HI - Station Map [Return to List](#)

NOAA/NOS/CO-OPS
Wind Speed/Gusts/Dir
1617433 Kawaihae, HI
from 08/12/2007 00:18 - 08/15/2007 00:18



Date/Time (AHST)

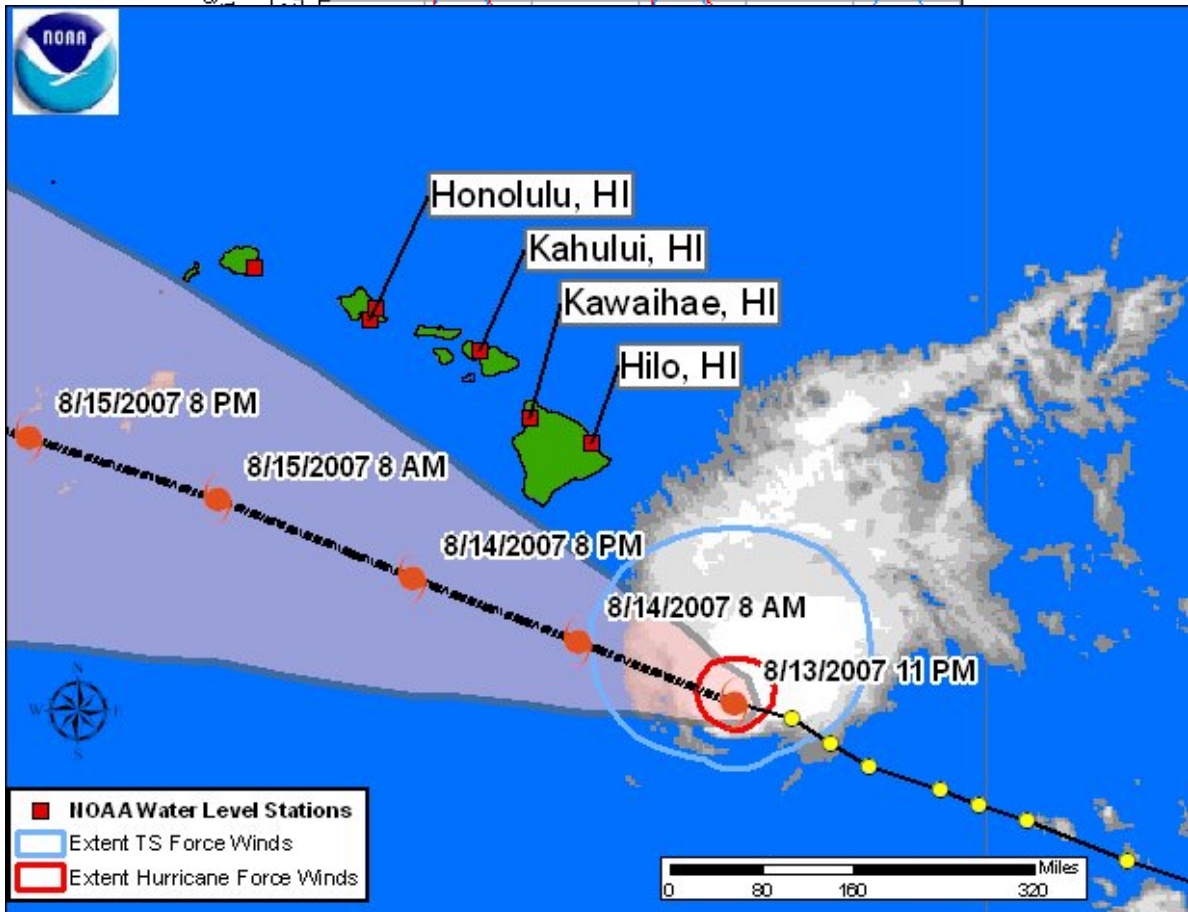
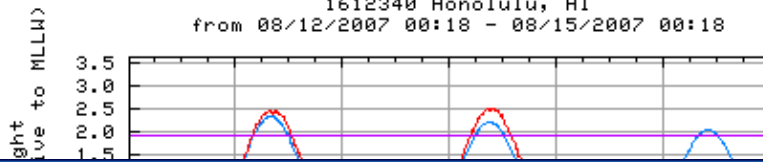
barometric pressure —

Last Observed Sample: 08/14/2007 00:00 (AHST)

Barometric Pressure: 1013.8 mb

Honolulu, HI - Station Map [Return to List](#)

NOAA/NOS/CO-OPS
 Preliminary 6 min. Water Level vs. Predicted Plot
 1612340 Honolulu, HI
 from 08/12/2007 00:18 - 08/15/2007 00:18



- NOAA Water Level Stations
- Extent TS Force Winds
- Extent Hurricane Force Winds

08/12	08/13	08/13	08/14	08/14	08/15
12:00	00:00	12:00	00:00	12:00	00:00

Date/Time (AHST)

barometric pressure ———

Last Observed Sample: 08/14/2007 00:00 (AHST)

Barometric Pressure: 1017.6 mb

Hurricane FLOSSIE QUICKLOOK, POSTED 00:00 HST 08/14/2007

Center for Operational Oceanographic Products & Services (CO-OPS) | National Ocean Service (NOS)
National Oceanic and Atmospheric Administration | U.S. Department of Commerce

