



Gulf of Mexico Harmful Algal Bloom Bulletin

29 December 2004

National Ocean Service

National Environmental Satellite, Data, and Information Service

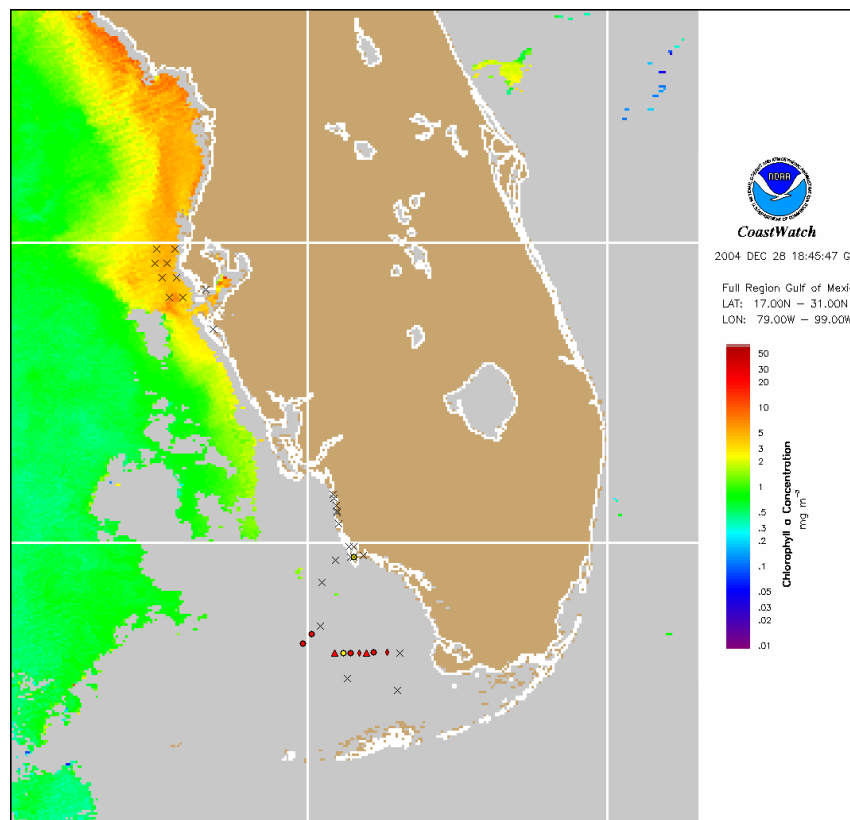
Last bulletin: December 28, 2004

Conditions: A harmful algal bloom has been identified north of the lower Keys. Moderate impacts at the beach are possible, as well as some water discoloration.

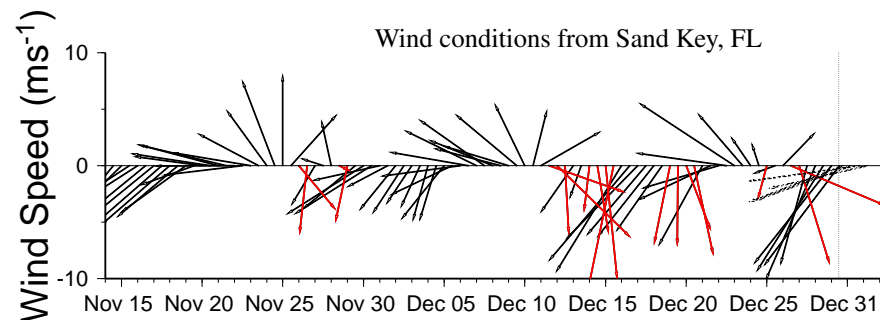
Analysis: Cloudy imagery has limited analysis of the bloom located north of the lower Keys. Strong northeasterlies to easterlies will continue transport to the southwest and westward through the weekend. As mentioned last bulletin, a medium concentration of *Karenia* was identified by Mote Marine Laboratory approximately 10 miles north of Big Pine on December 22 (24°56.5'N, 81°29.2'W).

Elevated chlorophyll feature offshore of Cedar Key to Clearwater persists. Unlikely to be *Karenia*. Reports of discolored water are possible.

~Fenstermacher & Fisher



Chlorophyll concentration from satellite with possible HAB areas shown by red polygon(s). Cell concentration sampling data from December 14, 2004 shown as red squares (high), red triangles (medium), red diamonds (low b), red circles (low a), orange circles (very low b), yellow circles (very low a), green circles (present), and black "X" (not present).

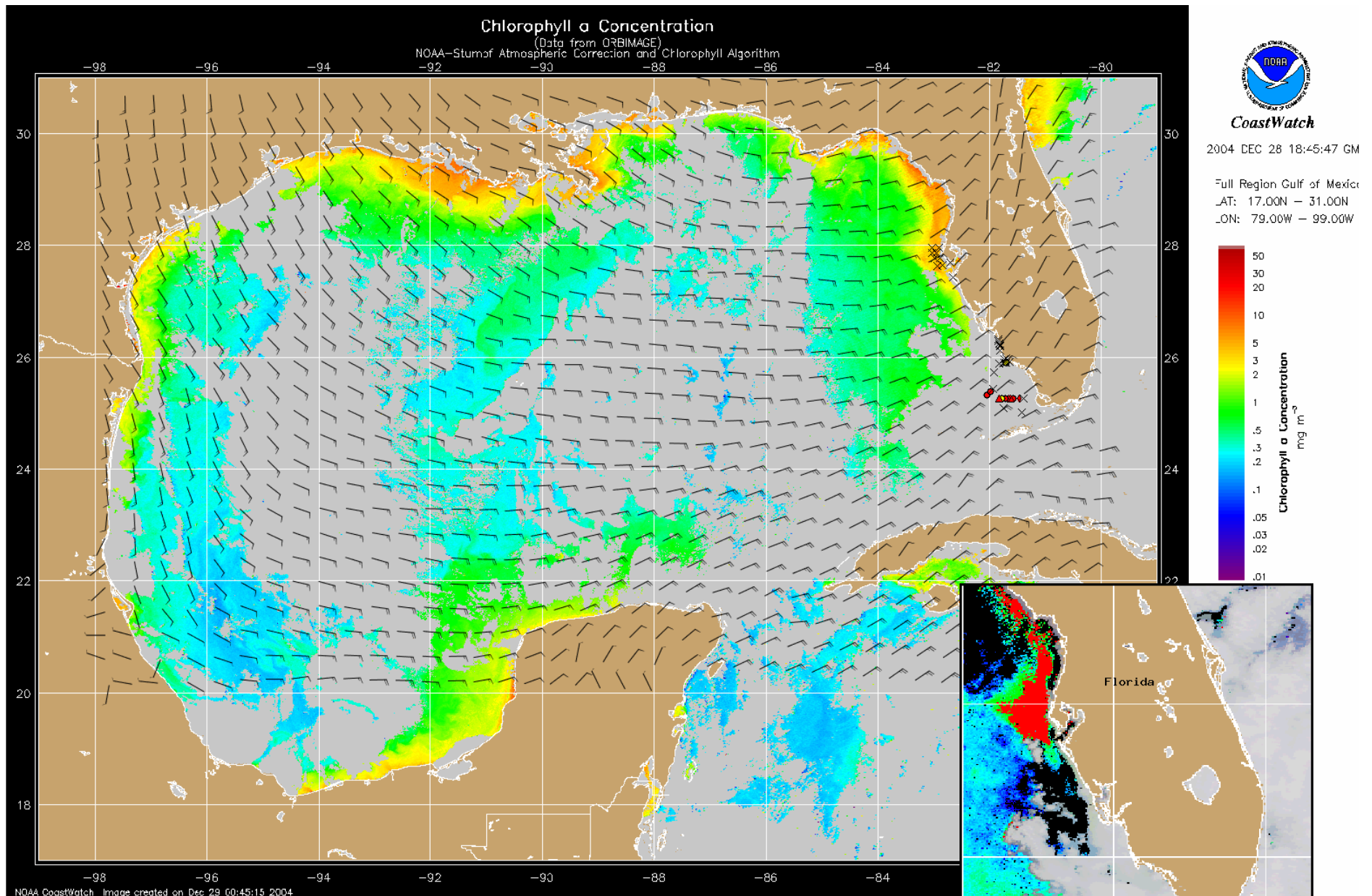


Wind speed and direction are averaged over 12 hours from measurements made on buoys. Length of line indicates speed; angle indicates direction. Red indicates that the wind direction favors upwelling near the coast. Values to the left of the dotted vertical line are measured values; values to the right are forecasts.

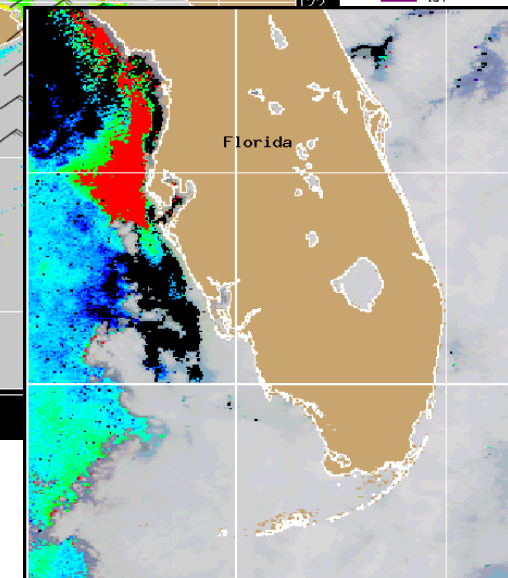
20 knot (10 m/s) northeasterlies to easterlies through Friday followed by 15-20 knot (7-10 m/s) easterlies through the weekend.

Please note the following restrictions on all SeaWiFS imagery derived from CoastWatch.

1. These data are restricted to civil marine applications only; i.e. federal, state, and local government use/distribution is permitted.
2. Distribution for military, or commercial purposes is NOT permitted.
3. There are restrictions on Internet/Web/public posting of these data.
4. Image products may be published in newspapers. Any other publishing arrangements must receive OrbImage approval via the CoastWatch Program.



Chlorophyll concentration from satellite and forecast winds for December 30, 2004 12Z with cell concentration sampling data from December 14, 2004 shown as red squares (high), red triangles (medium), red diamonds (low b), red circles (low a), orange circles (very low b), yellow circles (very low a), green circles (present), and black "X" (not present).



Blooms shown in red (see p. 1 analysis and image for interpretation)